



**EFFECTIVE OCTOBER 1, 2006 WASTE PRO WILL BE THE EXCLUSIVE GARBAGE HAULER FOR THE RESIDENTS IN THE CITY OF PORT ST LUCIE**

**QUESTIONS REGARDING COLLECTION DAYS SHOULD BE DIRECTED TO WASTE PRO AT 772-595-9390**

You can help Port St Lucie stay clean and green by following these easy guidelines for garbage, recycling, and vegetative waste collection.

**CUSTOMER SERVICE INFORMATION**

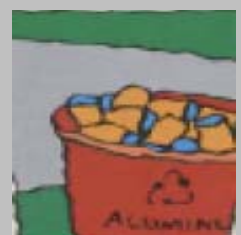
For information on the collection of garbage, yard waste, and recyclables call 595-9390

**HOLIDAY SCHEDULE**

On the following holidays, the Waste Pro Business office will be closed and waste collection services will not be provided:

- THANKSGIVING DAY
- CHRISTMAS DAY
- 4th OF JULY

**GARBAGE, YARD WASTE AND RECYCLING WILL BE COLLECTED ON THE NEXT REGULARLY SCHEDULED COLLECTION DAY**



**REMEMBER TO PLACE CONTAINERS AT THE CURB BY 7AM  
NORMAL COLLECTION SERVICES WILL BE PROVIDED AS  
SCHEDULED ON ALL OTHER HOLIDAYS**

## HOUSEHOLD GARBAGE COLLECTION

- All waste must be placed at the curb before 7AM for collection.
- All garbage must be containerized for collection either in a garbage bag or can. Bags must be securely tied, and cans must have tight fitting lids.
- Do not mix garbage and yard waste together - they must be in separate containers.
- Cans can be no larger than 32 gallons, each container set out for collection must weigh no more than 50 lbs.
- Please no auto, boat parts, or empty gas cans

**SET OUT TIME IS 7:00 AM**



## YARD WASTE

All yard waste in all areas will be collected on your routed scheduled pick up days. We encourage you to compost your yard waste, and leave grass clippings on the ground when you mow. However, if you prefer to have this material collected curbside, please follow these guidelines when preparing your yard waste for collection:

- **DO NOT** mix garbage and yard waste together.
- Loose yard waste, i.e. grass clippings, leaves and small twigs must be containerized.
- Neatly stack limbs, branches, palm fronds, etc. at the curb. If you have more than a few branches and limbs to be collected, please stack neatly, taking care not to create a tangled pile.
- Limbs must not exceed 4 feet.
- Separate stumps from other yard waste. No single piece of a tree can exceed 50 lbs.
- **Stacked Neatly:** means a person can reach around the pile and pick it up.

### BOX IT OR BAG IT

Any container can weigh no more than 50 lbs.

### STACK IT

In neat, manageable piles.  
Limbs not to exceed 4 ft.  
Except palm fronds.  
No piece to exceed 50 lbs

### CAN IT

No larger than 32 gal. capacity. Less than 50 lbs. each

## HOUSEHOLD HAZARDOUS WASTE

The following is a list of common household hazardous waste that may be brought to the St Lucie Co Baling and Recycling Facility for proper disposal:

- Automotive Fluids
- Lead Acid Batteries
- Household Chemicals
- Household Cleaners
- Oil Based Paints
- Herbicides
- Pesticides
- Swimming Pool Chemicals

For environmentally safe disposal of household hazardous waste, residents can bring these materials to the St Lucie Co Baling and Recycling Facility. Business hrs are Mon-Fri 7:30am-4:30pm and Saturdays 7:30am-3:00pm

**BUSINESS** generated hazardous waste **WILL NOT BE ACCEPTED.**

**FOR MORE INFORMATION CALL 772-462-1768**

# An Environmental Guide for Curbside Solid Waste and Recycling Collection



## Recycle In The Blue Bin

- Glass Bottles and Jars
- Aluminum Cans
- Steel Cans (Tin cans)
- Aerosol Cans
- Drink Boxes
- Milk and Juice Cartons
- Aluminum Pie Plates
- Aluminum Foil
- Rigid Plastic Containers  
(#1 thru #7)

NO STYROFOAM

## Recycle In The Green Bin

- Newspapers and Inserts
- Phone Books
- Magazines
- Catalogs
- Paperboard Boxes (Cereal and  
Cookie Boxes, Tissue Boxes, etc..)
- Cardboard Boxes (must be  
flattened and cut to fit in the bin)
- Brown Paper Grocery Bags

### PLEASE FOLLOW THESE SIMPLE GUIDELINES BEFORE PLACING RECYCLABLES IN YOUR BIN(S)

1. Empty and rinse containers, pie plates, and aluminum foil
2. Remove and discard caps and straws- they are not recyclable
3. No plastic bags, bulbs, ceramics, or junk mail in your recycling bin

### CURBSIDE TIPS

In stormy weather stack papers on the bottom of the bin. Place bins at the curb, or no further than 6 ft from the street, so your hauler can see them. Only use recycling bins for the recyclables. If there are other types of trash or garbage in your bins, they will leave them behind.

**ALL ITEMS MUST BE IN THE BIN for collection.**

**Items not in the bin will not be collected.**



[WWW.WASTEPROUSA.COM](http://WWW.WASTEPROUSA.COM)

4100 Seltvitz Road  
Ft Pierce, FL 34981  
772-595-9390

