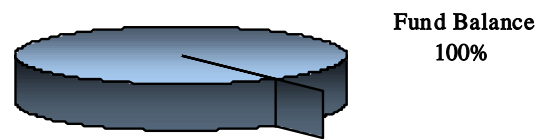


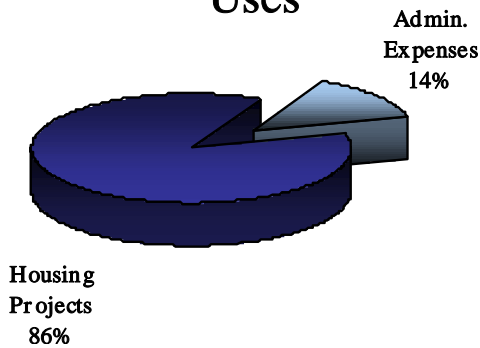
**CITY OF PORT ST. LUCIE
S.H.I.P. FUND
ANNUAL BUDGET
2009-10**

Revenue Source	Amount
Grant Revenue	\$0
Fund Balance	1,446,211
Total	\$1,446,211

Sources



Uses



Expenditure by Function	Amount
Housing Projects	\$1,248,351
Admin. Expenses	197,860
Total	\$1,446,211

State Housing Initiative Partnership (S.H.I.P.) Fund

The state S HIP grant that the City receives is accounted for in this fund and is used to assist low-income households with down payment and housing rehabilitation costs. The applicants must qualify according to an income level based on family size. Any request for repair funding must deal with a health and/or safety issue on their existing home. For down payment assistance, the applicants must meet the low-income standard to qualify but then also qualify with a financial institution for their home mortgage.

Major Revenue Source

Revenue for this fund is from the state grant and is received by the City on a monthly basis. The state earns these funds through documentary stamps charged to all real estate transfers. However, this program is not projected to be active in FY 2009-10. Thus no revenue is projected in the proposed budget. There is an expected fund balance to carryforward into next year of \$1.4 million.

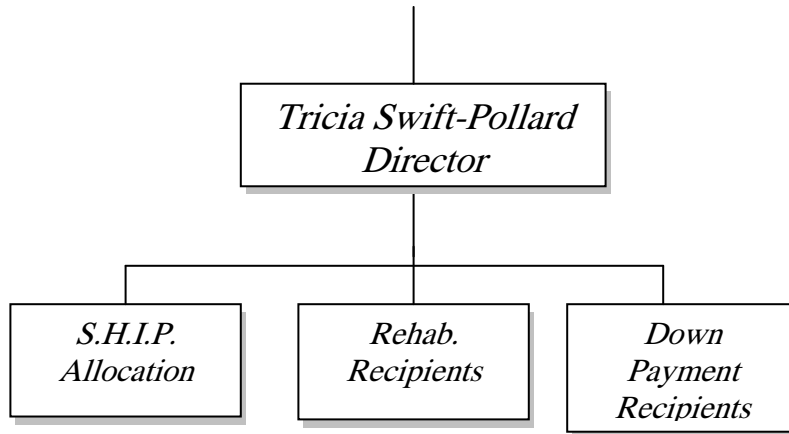
Expenditure Trends

The remaining funds for this program are budgeted as \$197,860 for administrative costs with \$1.2 million available for the housing program.

CITY OF PORT ST. LUCIE
APPROVED BUDGET - S.H.I.P. FUND #119
FY 2009-10

	AUDITED 2006-07 *****	AUDITED 2007-08 *****	ESTIMATED 2008-09 *****	APPROVED 2009-10 *****
REVENUES & SOURCES:				
Ship Grant	\$296,885	\$1,377,002	\$1,381,811	\$0
State Fire Disaster	0	0	0	0
Cash Carryforward (Housing \$'s)	0	0	1,028,278	1,248,351
Cash Carryforward (Administrative \$'s)	0	0	168,358	197,860
Interest Income	85,862	27,954	30,402	0
Refund of Prior Year Expenses	222,639	95,213	0	0
TOTAL	<u>\$605,385</u>	<u>\$1,500,169</u>	<u>\$2,608,849</u>	<u>\$1,446,211</u>
EXPENDITURES:				
Personal Services - SHIP Grant	\$68,892	\$50,994	\$97,828	\$135,078
Operating Expense	12,667	10,623	9,970	62,782
Capital Outlay	358	0	0	0
Fund Transfer	0	2,281	0	0
Sub-Total Admin. Exp.	<u>\$81,917</u>	<u>\$63,898</u>	<u>\$107,798</u>	<u>\$197,860</u>
HOUSING PROJECTS	\$2,036,577	\$1,405,757	\$1,054,840	\$1,248,351
Total Expenditures	<u>\$2,118,494</u>	<u>\$1,469,655</u>	<u>\$1,162,638</u>	<u>\$1,446,211</u>
SURPLUS <DEFICIT>	<u><u>(\$1,513,108)</u></u>	<u><u>\$30,514</u></u>	<u><u>\$1,446,211</u></u>	<u><u>\$0</u></u>

State Housing Initiatives Partnership



CITY OF PORT ST. LUCIE
STATE HOUSING INITIATIVES PARTNERSHIP - #119-5500

DEPARTMENTAL FUNCTION

Establish an affordable housing assistance program for persons from very-low to moderate income ranges through successful implementation of the State Housing Initiatives Partnership Program.

PERFORMANCE OBJECTIVES

- Comply with all State regulations.
- Coordinate with Lending Consortium to leverage state funding.

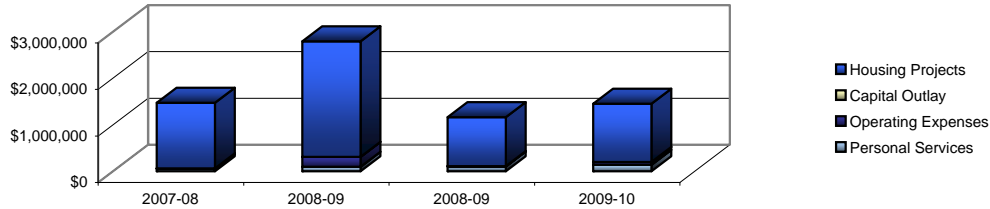
- Coordinate with the general public, public service agencies, lenders, contractors, realtors, businesses and credit agencies in application and funding process.
- Initiate and record contractual documents for rehabilitation and downpayment program.
- Coordinate and implement mandatory homebuyer education courses for all SHIP recipients of downpayment assistance.
- Provide post-homeownership counseling on foreclosure and refinancing.

<i>Objective/Workload</i>	<i>Performance Indicators Community Services</i>	<i>2006/07 Actual</i>	<i>2007/08 Actual</i>	<i>2008/09 Estimated</i>	<i>2009/10 Proposed</i>
	S.H.I.P. Program, Grant #'s Distributed	\$1,000,000	\$995,606	\$1,000,000	\$225,346
	# of Families Provided Down payment Assistance	23	23	20	20
	# of Families Provided Repair/rehab Assistance	55	55	50	50
	# of Families Provided Credit Counseling	150	150	150	150
	Volunteer Hours Provided to Area Social Agencies through S.H.I.P.	3,200 hrs	3,100 hrs	3,200	3,200

CITY OF PORT ST. LUCIE
S.H.I.P. FUND
DEPARTMENTAL BUDGET SUMMARY

DEPARTMENT: (S.H.I.P.) PROGRAM -- #119-550000/551000
 Tricia Swift-Pollard, Community Services Director

S.H.I.P. Budget Trends



EXPENDITURE SUMMARY:

	2007-08 AUDITED *****	2008-09 BUDGET *****	2008-09 ESTIMATED *****	2009-10 BUDGET *****
Personal Services	\$50,994	\$94,913	\$97,828	\$135,078
Operating Expenses	10,623	209,275	9,970	62,782
Capital Outlay	0	0	0	0
Interfund Transfer	2281	0	0	0
Housing Projects	1,405,757	2,486,859	1,054,840	1,248,351
Total	\$1,469,655	\$2,791,047	\$1,162,638	\$1,446,211

STAFFING SUMMARY:

(Full Time Equivalent)	FY 2007-08 *****	FY 2008-09 *****	FY 2009-10 *****
Community Services & Redevelopment Director	0.05	0.05	0.05
Assistant Director	0.10	0.10	0.10
Housing Specialist	0.10	0.10	0.35
Secretary	0.15	0.15	0.15
Community Services Coordinator	0.30	0.30	1.20
Total	0.70	0.70	1.85

CAPITAL OUTLAY:

None

CITY OF PORT ST. LUCIE
STATE HOUSING INITIATIVE PARTNERSHIP - #119
ECONOMIC ENVIRONMENT - SHIP PROGRAM - #550000

OBJ CODE	ACCOUNT DESCRIPTION	2006-07 AUDITED	2007-08 AUDITED	2008-09 ESTIMATED	2009-10 BUDGET
12-0	Salaries & Wages	\$0	\$0	\$0	\$0
14-0	Overtime	0	0	0	0
21-1	F.I.C.A.	0	0	0	0
21-2	Medicare	0	0	0	0
22-0	Retirement Contributions	0	0	0	0
23-0	Life & Health Ins.	0	0	0	0
24-0	Worker's Compensation	0	0	0	0
25-0	Unemployment Compensation	0	0	0	0
	TOTAL PERSONAL SERVICES	\$0	\$0	\$0	\$0
49-0	Other Current Charges & Oblig.	\$0	\$0	\$169	\$0
49-111	Repair & Rehabilitation	1,130,259	1,194,853	1,040,294	1,248,351
49-112	Homebuyer Education	1,000	1,250	1,150	0
49-444	Down payment	905,319	209,654	13,227	0
	TOTAL OPERATING EXPENSE	\$2,036,577	\$1,405,757	\$1,054,840	\$1,248,351
	TOTAL *	\$2,036,577	\$1,405,757	\$1,054,840	\$1,248,351

CITY OF PORT ST. LUCIE
STATE HOUSING INITIATIVE PARTNERSHIP - #119
ECONOMIC ENVIRONMENT - S.H.I.P. ADMINISTRATION #551000

OBJ CODE	ACCOUNT DESCRIPTION	2006-07 AUDITED	2007-08 AUDITED	2008-09 ESTIMATED	2009-10 BUDGET
12-0	Salaries & Wages	\$48,820	\$37,105	\$77,489	\$92,748
14-0	Overtime	0	0	39	0
21-1	F.I.C.A.	2,936	2,246	4,113	5,750
21-2	Medicare	691	532	964	1,345
22-0	Retirement Contributions	5,126	3,908	7,105	9,738
23-0	Life & Health Ins.	9,969	6,651	7,967	24,859
24-0	Worker's Compensation	1,350	552	150	174
25-0	Unemployment Compensation	0	0	0	464
	TOTAL PERSONAL SERVICES	\$68,892	\$50,994	\$97,828	\$135,078
31-0	Professional Services	\$0	\$0	\$0	\$0
32-0	Accounting & Audit	990	102	322	2,500
34-0	Other Contractual Svcs.	0	100	0	0
34-1	Interdepartmental	0	0	0	0
40-4	Travel Expense	1,216	1,398	1,764	2,000
40-401	Travel - Car Allowance	525	551	525	550
41-0	Communications Service	0	0	0	1,500
42-0	Transportation	1,047	684	691	2,000
45-0	Insurance	2,730	3,875	573	905
46-2	Repairs/Maint.-Office Equip.	0	0	0	500
47-0	Printing & Binding	639	458	0	2,000
48-0	Promotional Activities	0	0	0	0
49-0	Other Current Charges & Oblig.	2,108	508	2,793	43,839
51-0	Office Supplies	1,864	1,195	1,348	1,200
52-0	Operating Supplies	569	566	974	1,227
54-0	Books, Public., Memberships	879	511	329	1,061
54-1	Training-Education	100	675	650	3,500
	TOTAL OPERATING EXPENSE	\$12,667	\$10,623	\$9,970	\$62,782
64-2	Office Furniture	\$358	\$0	\$0	\$0
	TOTAL OPERATING EXPENSE	\$358	\$0	\$0	\$0
	*TOTAL SHIP *	\$81,916	\$61,617	\$107,798	\$197,860