

City of Port St. Lucie Comprehensive Plan Update

Citizen Summit Summary

WORKSHOP INFORMATION

Date: Saturday, February 1, 2025 @ 9:00 AM

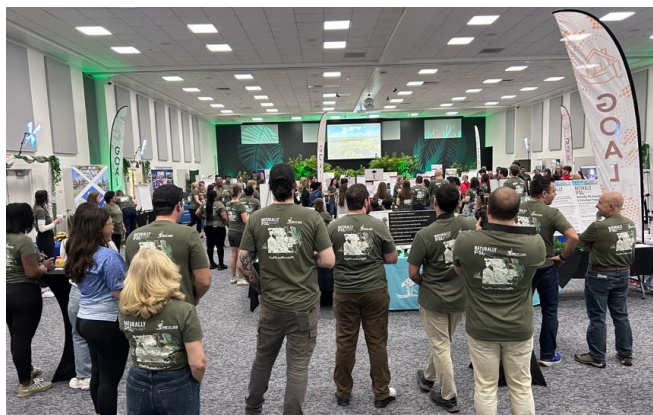
Location: Port St. Lucie Community Center (2195 SE Airoso Blvd, Port St. Lucie, FL 34984)

INTRODUCTION

The City of Port St. Lucie has hosted an annual Citizen Summit for the last seven years. This year's event was held on Saturday, February 1st, from 9:00 AM to 12:00 PM at the Community Center. Unlike traditional government meetings, the Summit features free, interactive activities for all ages, allowing residents to learn more about current city events and programs. Various City departments organized activities where residents could provide feedback and contribute to the city's future.



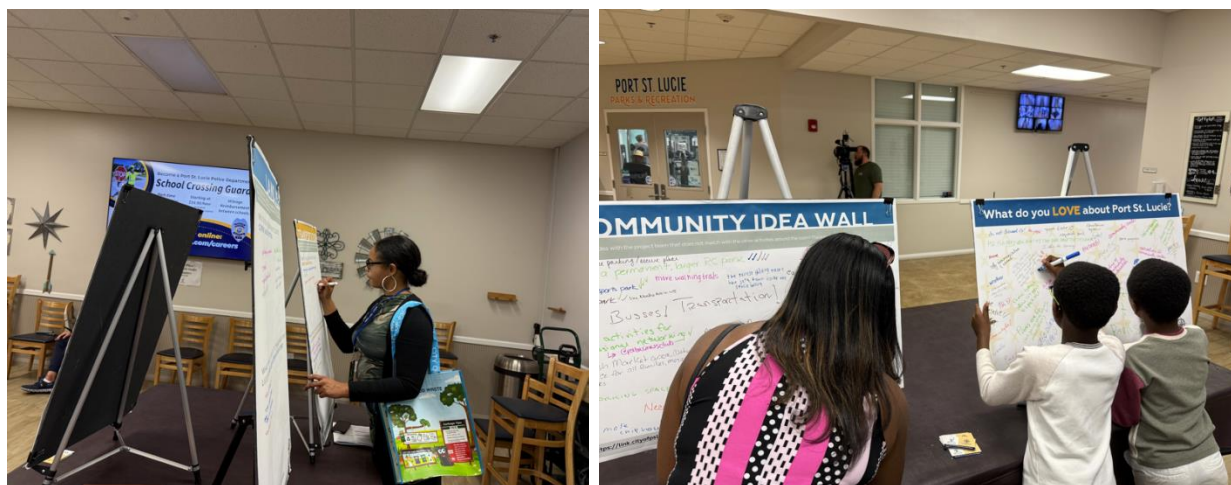
The Inspire Placemaking Collective team joined City staff to engage residents and collect their input on the update of the City's Comprehensive Plan. **Attachment A** contains a list of the activity facilitators.



ENGAGEMENT ACTIVITIES

Several engagement activities were made available to workshop participants to help the consulting team assess the current conditions within the City. The activities included questions about land use, transportation, infrastructure, housing, and the economy. Two additional boards were provided to solicit input, one asking what attendees love about the City and another one where people could provide miscellaneous comments (Community Idea Wall). Additionally, two boards asked participants which initiatives should be prioritized and what types of housing they think should be developed.

The activities were set up at the Community Center and facilitated by members of both City and Inspire Staff. Below is an overview of each activity.



Where do you call home

In this activity, participants identified the locations of where they live or operate a business within the city of Port St. Lucie. Each participant was given a sticker to mark their location on the map. A scan of the map highlighting these locations is presented in **Attachment B**.

Community Assessment

In this activity, participants provided feedback on what they appreciate about Port St. Lucie's current land use, transportation, infrastructure, housing, and economy, as well as what they would like to change in the future. A scan of the community's responses is presented in **Attachment C**. The checkmarks represent other people with the same comment.

What I love about Port St. Lucie

In this activity, participants expressed what they love about living, working, and playing in the City by writing their reasons on a large banner. The responses highlighted key community features that should be preserved, enhanced, and prioritized in the upcoming update to the Port St. Lucie 2045 Comprehensive Plan. The responses are shown in **Attachment D**.

Community Idea Wall

This activity invited attendees to share additional comments with the project team that were not addressed in the other workshop activities. The list of responses can be found in **Attachment E**.

Survey Questions

This activity, led by City Staff, consisted of two questions. The first asked participants to identify which initiatives the City should prioritize over the next 20 years to support future growth, with the option to select up to five choices. The second question inquired about the types of housing participants believe should be developed to accommodate Port St. Lucie's growing population, assuming they are located in appropriate areas of the City. Participants were given the option to select all that apply. The responses can be found in **Attachment F**.

KEY TAKEAWAYS

The public input gathered during the Citizen Summit was largely positive and productive. While a variety of perspectives were shared, there was significant consensus on several key points. The main trends for each category are outlined below.

Land Use

Participants admire the city's parks and green spaces, including walking trails and parks. Respondents appreciate the variety of trees and plants, the clean environment, and the focus on preserving large lot sizes. The lack of high-rise buildings is also seen as a positive aspect.

Respondents called for more wildlife areas, commercial spaces, and pedestrian-friendly features such as sidewalks and bike lanes. Some respondents want to see a greater focus on preserving native wildlife and increasing open spaces, while others suggest reducing commercial development and emphasizing mixed-use areas. Additionally, there are requests for improvements in infrastructure, such as addressing flooding issues and enhancing access to regional parks with added amenities like restaurants, seating areas, and better connections.

Housing

Participants provided positive feedback around neighborhood stability, a strong sense of community, and a single-family housing focus. Many appreciate the clean, organized, and friendly environment of the city, along with affordable housing for young families. The community events and quiet, safe atmosphere add to the city's appeal. Other respondents, however, noted the housing affordability is a key concern, with many seeking lower cost housing and slower development to prevent overcrowding. There is also a desire for more sustainable housing options like tiny homes and duplexes, alongside better zoning and maintenance. Respondents also call for lower property taxes, less dense development, and a focus on preserving the environment.

Transportation

Several participants underscored their appreciation for and availability of the free bus service, as well as biking options at the park and short-term rental opportunities. Participants also

appreciated the clean and accessible transportation system. There was a strong focus on improving safety, particularly on I-95, with requests for wider lanes and better lighting in neighborhoods. Respondents also want more sidewalks, bike-friendly infrastructure, and increased public transportation options, including more frequent buses, extended hours, and routes to nearby cities. Additionally, some participants suggest adding more transportation options like Brightline, a train stop, and additional bridges to the barrier island to enhance connectivity.

Infrastructure

Participants noted several positive aspects, including dependable water quality, safe roads, and effective traffic circles. Respondents also appreciate the city's parks and efforts to bury power lines, alongside new development projects that prioritize infrastructure. The grid system for roads and the large lot sizes are also viewed favorably. There is a strong desire for road improvements, including widening roadways, adding more streetlights, and increasing sidewalks, especially near housing areas and schools. Some respondents called for better planning to address traffic congestion, particularly on major roads like PSL Blvd and Sidonia St. Additionally, there were requests for more bike lanes, improved water quality, and better connections to the west, as well as a focus on pedestrian infrastructure over car-centric planning.

Economy

Participants highlighted the city's diverse economy, with appreciation for businesses like Sam's Club and the availability of services such as restaurants and gas stations like Wawa. Respondents also value the area's central location, which is seen as ripe for growth, and the relatively low gas prices. Additionally, the beach vibe and slower pace of life contribute to the appeal, with general satisfaction with the economy's stability and the services it provides in exchange for taxes. There is a clear interest for more high-paying and tech-based jobs, as well as incentives for skill development and education. Respondents also want to see more diverse dining and entertainment options, such as higher-end restaurants, and nightlife and stores like Trader Joe's. Additionally, there are suggestions for creating more spaces for entrepreneurs, co-working spaces for home-based businesses, and more attractions like museums, water parks, and stores, to enhance the city's cultural and retail offerings.

APPENDICES

- A. Attendance List
- B. "Where do you call home?" Results
- C. Community Assessment Results
- D. "What I love about Port St. Lucie" Results
- E. "Community Idea Wall" Results
- F. Survey Results

Appendix A. Attendance List

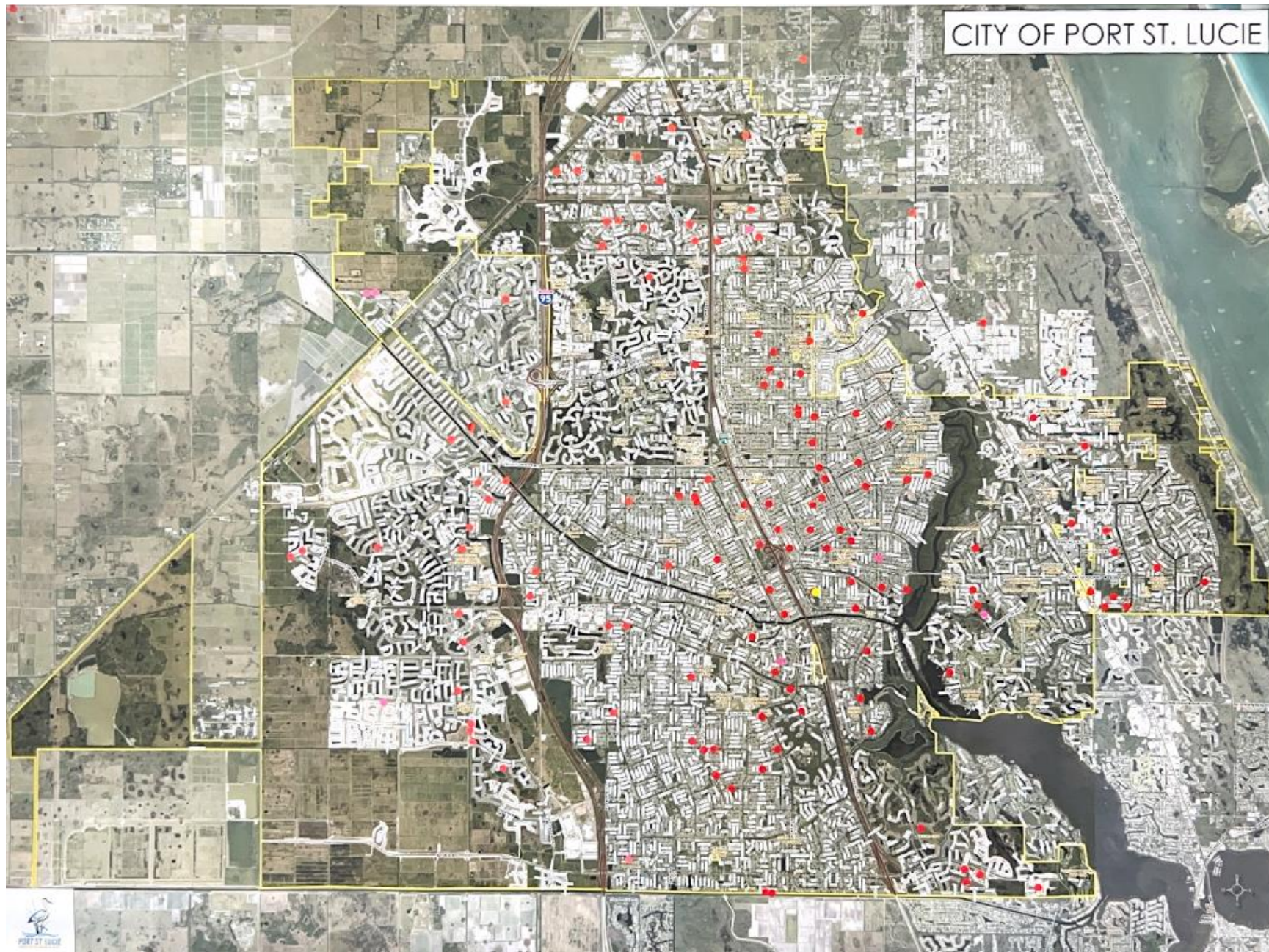
Port St. Lucie Staff and Officials

1. Bridget Kean, Planning & Zoning Deputy Director
2. Sofia Trail, Planner
3. Francis Forman, Planner
4. Cody Sisk, Planner
5. Deborah Kotrady, Clerk

Inspire Project Team Members

6. Patricia Tyjeski, Project Manager
7. Gabriela Castro, Deputy Project Manager
8. Emilee Aguerrebere, Planner

Appendix B. “Where do you call home?” Results



Appendix C. Community Assessment Results

INFRASTRUCTURE

Share what you like about Port St. Lucie today and what changes you would like to see in the future by responding to the questions below. If you agree with responses from other community members, show your support by adding a checkmark (✓) next to their answers.

WHAT DO YOU LIKE ABOUT PORT ST. LUCIE'S CURRENT INFRASTRUCTURE?

- Dependable, good water quality ✓
- Safe roads
- Traffic circles ✓
- parks
- WIDEN ROADS. MORE LIGHTS. LESS ROUNDABOUTS. WASTE OF MONEY!
- Cross-town Parkway!!
- Make Port St. Lucie truly a perfect home @ their current location
- Need more street lighting + sidewalks ✓

WHAT WOULD YOU LIKE TO CHANGE ABOUT PORT ST. LUCIE'S INFRASTRUCTURE IN THE FUTURE?

- glades cut-off road ✓✓
- more bike lanes/sidewalks ✓✓✓✓✓
- Northport neighborhood (near Sportsman Park) needs improvement, Curtis + Marianne
- awareness of road closure
- connection out west - Ridge line rd - Cross-town Rd
- Move Bridges/Elevated Roads
- more lighting in the neighborhoods ✓✓✓✓✓✓✓✓
- improve water quality ✓
- get PSL Blvd. finished all the way to Becker Rd.!! ✓✓
- get rid of septic systems
- More street lights & sidewalks Torino East In housing areas



HAVE MORE TO SAY ABOUT **INFRASTRUCTURE** IN PORT ST. LUCIE? VISIT THE PROJECT WEBSITE!

<https://link.cityofpsl.com/compplan>



INFRASTRUCTURE

Share what you like about Port St. Lucie today and what changes you would like to see in the future by responding to the questions below. If you agree with responses from other community members, show your support by adding a checkmark (✓) next to their answers.

WHAT DO YOU LIKE ABOUT PORT ST. LUCIE'S CURRENT INFRASTRUCTURE?

- no loss of water during hurricanes ✓
- Burying of power lines ✓✓✓
- No overly tall buildings ✓✓✓
- No tree blight
- Beaches / Parks ✓
- taxes.
- new development - good jump job w/ infrastructure prior to building.
- large lot-lines / Prevents Congestion ✓

WHAT WOULD YOU LIKE TO CHANGE ABOUT PORT ST. LUCIE'S INFRASTRUCTURE IN THE FUTURE?

Add flashing yellow arrow @ Crosstown to Seaside Dr.!

DEDICATED GOLF CART PATHS IN TRADITION & AROUND RIVERLAND

LEFT EGRESS TURN LANES OUT OF COMMERCIAL PROPERTIES

Large sidewalks for bikes, walkers, carts.

- ✓ enlarge left lane turn area ✓
- ✓ Coordinate traffic lights - especially on Crosstown Pkwy. ✓
- GATUN/BRESCIA ✓

More rising lanes!

- ground work during hurricane ✓
- PSL Blvd + Honeysuckle - travelling West needs something! maybe green light but longer in afternoon check it out 4pm-7pm takes at least 30 min to go 1 mile. . .

- repairing more than just main roads ✓
- less Parks and more water parks
- more sidewalks, especially near schools. ✓✓

Better school bus behavior. Speak to parents prior to busing. Expectation left.



HAVE MORE TO SAY ABOUT **INFRASTRUCTURE** IN PORT ST. LUCIE? VISIT THE PROJECT WEBSITE!

<https://link.cityofpsl.com/compplan>

INFRASTRUCTURE

Share what you like about Port St. Lucie today and what changes you would like to see in the future by responding to the questions below. If you agree with responses from other community members, show your support by adding a checkmark (✓) next to their answers.

WHAT DO YOU LIKE ABOUT PORT ST. LUCIE'S CURRENT INFRASTRUCTURE?

Construction faster

The Grid
system for roads
most roads connect

WHAT WOULD YOU LIKE TO CHANGE ABOUT PORT ST. LUCIE'S INFRASTRUCTURE IN THE FUTURE?

The Roads! To small for the traffic!
Side Walks!

Prioritize Pedestrians
and walkability over
car infrastructure

Extend Crosstown Hwy to the east/beach

definitely need better planning for roads/psl Blvd & SAVONA always backed up -
crossover right before PSL Blvd on Gattlin - always congested and accidents frequently

No Forward thinking
when planning roads

Traffic is too much
Roads: expansion & repairs (potholes)



HAVE MORE TO SAY ABOUT **INFRASTRUCTURE**
IN PORT ST. LUCIE? VISIT THE PROJECT WEBSITE!

<https://link.cityofpsl.com/compplan>



LAND USE

Share what you like about Port St. Lucie today and what changes you would like to see in the future by responding to the questions below. If you agree with responses from other community members, show your support by adding a checkmark (✓) next to their answers.

WHAT DO YOU LIKE ABOUT PORT ST. LUCIE'S CURRENT LAND USE PATTERN?

- park development & improvements ✓✓✓✓✓
- Commercial ✓✓✓✓✓
- good existing land use ✓✓✓✓✓
- MANY NICE PARKS ✓✓✓✓✓
- Very beautiful parks ✓✓✓✓✓
- Areas for walking ✓✓✓✓✓
- Dog Parks ✓✓✓✓✓
- Parks ✓✓✓✓✓
- play grounds ✓✓✓✓✓
- Variety of trees + plants! ✓✓✓✓✓
- Need - futsal court ✓✓✓✓✓
- soccer courts ✓✓✓✓✓
- Keep existing parks, create walking shady areas ✓✓✓✓✓
- Water Parks ✓✓✓✓✓
- Business/Entertainment Districts building as fast as Residential ✓✓✓✓✓
- Cleanliness ✓✓✓✓✓
- No highrise buildings ✓✓✓✓✓

WHAT WOULD YOU LIKE TO CHANGE ABOUT PORT ST. LUCIE'S LAND USE PATTERN IN THE FUTURE?

- more commercial ✓✓✓✓✓
- retain industrial areas ✓✓✓✓✓
- Areas for automotive shops ✓✓✓✓✓
- roadways / traffic ✓✓✓✓✓
- Loss Commercial ✓✓✓✓✓
- Southbeach Lakes area ✓✓✓✓✓
- entrance Bay St. Lucie ✓✓✓✓✓
- side walks - side walk to tie into Sessia Chula Park ✓✓✓✓✓
- kayak slips for lakes ✓✓✓✓✓
- Dog Park? ✓✓✓✓✓
- adding trees a natural finishy around lakes ✓✓✓✓✓
- MORE CONCERN FOR NATIVE WILDLIFE + DESTRUCTION OF HABITATS ✓✓✓✓✓
- Commercial activity @ Regional Port ✓✓✓✓✓
- like shops, restaurants that help regional port ✓✓✓✓✓
- Business/Entertainment Districts ✓✓✓✓✓
- sewage problems ✓✓✓✓✓
- fix Flooding problems ✓✓✓✓✓
- fix No-sezums problem. (Can't enjoy my porch) ✓✓✓✓✓
- add park by Becker Road, seating area ✓✓✓✓✓
- add park near Bayshore 100 between Alton Bay Shore ✓✓✓✓✓
- Becker Ridge - beautify entrance from turnpike ✓✓✓✓✓
- MORE OPEN SPACE ✓✓✓✓✓
- lights on streets ✓✓✓✓✓
- more sidewalks & wider ✓✓✓✓✓
- Trim trees that block street signs ✓✓✓✓✓

CHARTING
PORT ST. LUCIE
2045

HAVE MORE TO SAY ABOUT LAND USE IN PORT ST. LUCIE? VISIT THE PROJECT WEBSITE!

<https://link.cityofpsl.com/compplan>

Support wildlife during planning



LAND USE

Share what you like about Port St. Lucie today and what changes you would like to see in the future by responding to the questions below. If you agree with responses from other community members, show your support by adding a checkmark (✓) next to their answers.

WHAT DO YOU LIKE ABOUT PORT ST. LUCIE'S CURRENT LAND USE PATTERN?

- Large Lot-lines/ less Congested ✓
Nothing! my job

WHAT WOULD YOU LIKE TO CHANGE ABOUT PORT ST. LUCIE'S LAND USE PATTERN IN THE FUTURE?

- More Preserves, less lot lines ✓
more water and less parking
Focus more on pedestrians and bicyclists, design neighborhoods and corridors around them
more business less residential
Allow for more mixed use land Dev.

More an investment in Cultural Art

Clean water in our rivers ✓

A TRUE BEACH Yes to having a BEACH!

- ✓ IMPROVE INFRASTRUCTURE & SERVICES @ SOUTH SIDE OF THE CITY ALONG BECKER ROAD,



HAVE MORE TO SAY ABOUT LAND USE IN PORT ST. LUCIE? VISIT THE PROJECT WEBSITE!

<https://link.cityofpsl.com/compplan>



HOUSING

Share what you like about Port St. Lucie today and what changes you would like to see in the future by responding to the questions below. If you agree with responses from other community members, show your support by adding a checkmark (✓) next to their answers.

WHAT DO YOU LIKE ABOUT PORT ST. LUCIE'S CURRENT HOUSING MARKET?

- Neighborhood Stabilization Program - bring it back
- mixed housing ✓ *It's A Destination*
- options
- locations ✓
- Friendly Neighbors ✓✓✓
- Innovation Center - sense of community
- events for families/yoga
- Fair
- Quality housing *Affordable for your families*

WHAT WOULD YOU LIKE TO CHANGE ABOUT PORT ST. LUCIE'S HOUSING MARKET IN THE FUTURE?

- Lower Taxes ✓ *duplexes, multi-family*
- slow down growth of housing - no balance ✓ *Make it Affordable ✓✓*
- improve maintenance *generational housing*
- don't like anything about the current housing
- too much PUD development
- housing affordability ✓✓✓✓
- less impact on nature/environment ✓✓✓
- slow down development ✓
- multi-use development ✓
- ADUs
- not too dense/apartments
- Consider more strategic positioning of Hots and townhomes *Tiny Home Sections*
- STOP RAISING PROPERTY TAXES WITH THE INFUX OF NEW RESIDENTS *Need more Retail + movie Theatre*

Active Life Enforcement

*LOWER TAXES / CAP SPENDING
→ REIMBURSE SPENDING*

Need more Retail + movie Theatre



IT SHOULD BE CHEAPER!



HAVE MORE TO SAY ABOUT HOUSING IN PORT ST. LUCIE? VISIT THE PROJECT WEBSITE!

<https://link.cityofpsl.com/complan>

HOUSING

Share what you like about Port St. Lucie today and what changes you would like to see in the future by responding to the questions below. If you agree with responses from other community members, show your support by adding a checkmark (✓) next to their answers.

WHAT DO YOU LIKE ABOUT PORT ST. LUCIE'S CURRENT HOUSING MARKET?

It is fine.

Homes have become too expensive, especially for new families.

Too many apartments are close together. Space them out. They look like a camp.

WHAT WOULD YOU LIKE TO CHANGE ABOUT PORT ST. LUCIE'S HOUSING MARKET IN THE FUTURE?

PLEASE- SLOW DOWN
THE BUILDING B/C
THE INFRASTRUCTURE CAN'T
HANDLE IT!!!!!!



CHARTING
PORT ST. LUCIE
2045



HAVE MORE TO SAY ABOUT HOUSING IN PORT ST. LUCIE? VISIT THE PROJECT WEBSITE!

<https://link.cityofpsl.com/compplan>

HOUSING

Share what you like about Port St. Lucie today and what changes you would like to see in the future by responding to the questions below. If you agree with responses from other community members, show your support by adding a checkmark (✓) next to their answers.

WHAT DO YOU LIKE ABOUT PORT ST. LUCIE'S CURRENT HOUSING MARKET?

Too expensive ✓
 ✓ Way too expensive
 Nice Neighborhood/clean/quiet ✓
 Single home focus! ✓
 ✓ smaller mixed developments w/out HOA's ✓
 Gentrification ✓
 Not enough affordable housing ✓
 Plenty of single family housing options ✓
 Too many apartments are close space them out. They look like tenements ✓
 Safe and quiet place to live. ✓
 Build Tiny Homes ✓
 Too much congestion!!!
 Bigger lots, more room for homes ✓
 More tiny homes!!!
 ✓ Keep the TROP
 Approve building of Mother in Law Suites & Tiny homes on property.

WHAT WOULD YOU LIKE TO CHANGE ABOUT PORT ST. LUCIE'S HOUSING MARKET IN THE FUTURE?

LOWER PROPERTY TAXES

More Affordable Housing ✓
 Taxes Lowered ✓
 Cost & Availability of Insurance ✓
 more 2-story homes ✓
 Flexible work from home opportunities ✓
 Lower taxes ✓
 ✓ Stop Bldg unless you can handle Traffic ✓
 ✓ & school overcrowding ✓
 Taxes way too high ✓
 More Affordable ✓
 Loosen Zoning Reg to allow 4 different housing options: Duplex etc...
 more homes for young professionals ✓
 lower taxes ✓
 Lower taxes & house prices ✓
 No overly tall buildings ✓
 Stop building ✓

HAVE MORE TO SAY ABOUT HOUSING IN PORT ST. LUCIE? VISIT THE PROJECT WEBSITE!



<https://link.cityofpsl.com/compplan>



ECONOMY

Share what you like about Port St. Lucie today and what changes you would like to see in the future by responding to the questions below. If you agree with responses from other community members, show your support by adding a checkmark (✓) next to their answers.

WHAT DO YOU LIKE ABOUT PORT ST. LUCIE'S CURRENT ECONOMY?

- testing/ trial of restaurants + gas stations
- Wawa ✓✓
- gas prices
- IT IS DIVERSE ✓✓
- sam's club

WHAT WOULD YOU LIKE TO CHANGE ABOUT PORT ST. LUCIE'S ECONOMY IN THE FUTURE?

- would love to have a ^{more cool} ✓✓✓✓✓
- Incentives for people learn skilled jobs or go back to school
- more activities for professional networking
- more tech jobs ✓
- higher paying jobs / tech industry
- center for spaces
- Ikea ✓✓
- more well known restaurants Cheesecake Factory, PF Changs
- more Dining experiences. Fine Dining
- Co-working space for home based businesses - We Work
- Costco ✓
- Better Restaurants
- Upscale Asian food - Blackbird



HAVE MORE TO SAY ABOUT THE ECONOMY IN PORT ST. LUCIE? VISIT THE PROJECT WEBSITE!

<https://link.cityofpsl.com/compplan>



ECONOMY

Share what you like about Port St. Lucie today and what changes you would like to see in the future by responding to the questions below. If you agree with responses from other community members, show your support by adding a checkmark (✓) next to their answers.

WHAT DO YOU LIKE ABOUT PORT ST. LUCIE'S CURRENT ECONOMY?

- good economy / unemployment rate ✓ *need corporate attention w/ higher paying jobs (not just warehouse & service) to attract & retain ✓*
- Sam's Club ✓
- ITS not Miami or Orlando. Still family and community focused! ✓
- Beach Vibe w/ slower pace feel
- Centrally located / ripe for growth ✓

I am happy to pay taxes in exchange for services, safety & pride of community! Thank you.

WHAT WOULD YOU LIKE TO CHANGE ABOUT PORT ST. LUCIE'S ECONOMY IN THE FUTURE?

- more shops and water parks* *MORE RETAIL* *lower taxes* *LOWER TAXES!*
- ✓ *Trader Joe's* *Yoga classes* *Lego store* *financial banking* *tech*
 - Costco* ✓ *+ taxes* *high tradition* *the tallest*
 - Costco* *REFORMER BIDS* *Better Mall* *Museum in the*
 - Trader Joe's* *Martial Arts in tradition* *agor store City with*
 - Aquatic pool* ✓ ✓ *Indoor Mall* *h 109 sort*
 - YMCA* ✓ *Museums* *Lessen Regulations to all our small biz to thrive in times and abolish parking minimums and allow small biz to have access to more facilities / public space opportunities*
 - More of a nightlife* *Great Wolf Hotel*
 - INDOOR/outdoor pools* ✓ *Help Homeless*
- FIN INVESTMENT IN CULTURAL ART - more arts & visual art*



CHARTING
PORT ST. LUCIE
2045



HAVE MORE TO SAY ABOUT THE ECONOMY IN PORT ST. LUCIE? VISIT THE PROJECT WEBSITE!

<https://link.cityofpsl.com/compplan>

TRANSPORTATION

Share what you like about Port St. Lucie today and what changes you would like to see in the future by responding to the questions below. If you agree with responses from other community members, show your support by adding a checkmark (✓) next to their answers.

WHAT DO YOU LIKE ABOUT PORT ST. LUCIE'S CURRENT TRANSPORTATION?

- ~~go~~ doing good job about adding sidewalks + bike lanes, lighting ✓
- FREE BUS ✓✓✓✓
- TRAFFIC LINES FREE! - FEW BOTTLENECKS ✓
- APT Transportation
- Biking options at the park ✓
- short-term rental

WHAT WOULD YOU LIKE TO CHANGE ABOUT PORT ST. LUCIE'S TRANSPORTATION IN THE FUTURE?

- speeding / lack of safety on I-95 ✓
→ bigger lanes to prevent accidents
- APT / call to pick up needs to be expanded
- Sidewalks ✓✓
- lighting in neighborhoods ✓✓
- MORE SIDEWALKS ✓✓
- lights ✓
- ~~Food~~ Food Trucks!
- lighting where big walkways are in Hutchinson Blvd ✓
- e-bikes
- another bridge to barrier island to Hutchinson Island
- More lighting ✓
- Brightline ✓✓
- Lane and Road size built during construction of New Developments
- more public transportation /
- more frequency for transit
- School Buses park there (at stops)
- For Bikes to be ridden on the side-walks!



HAVE MORE TO SAY ABOUT **TRANSPORTATION** IN PORT ST. LUCIE? VISIT THE PROJECT WEBSITE!

<https://link.cityofpsl.com/compplan>



Free Bus (ART) ✓✓✓✓✓

Free BV ✓✓✓✓✓✓✓✓✓✓

Intensity has
also waves

Free
Clean, Available, wonderful job! ✓✓✓

~~Social activities for teenagers between 15-18 years of age~~

School Buses should not stop directly on Rt 1

Train stop nearby or public transportation to nearby cities ✓✓✓✓✓✓✓✓✓✓

Transportation to West Palm and Orlando ✓ - HIGHWAY from I-95 to I-15

Will obtain more but also officers ✓✓

More routes ✓✓

longer hours

open on Sundays ✓✓

More stops a location ✓

- Cameo-dead end area needs traffic calming

a stop every $\frac{1}{2}$ hour ✓
fewer stops ✓

yes \rightarrow MORE COSTS \neq *
MORE STOPS

Safe bike lanes ✓

note
free buses!! ✓

Bring trail to PSL ✓✓✓



<https://link.cityofpsl.com/compplan>



Appendix D. "What I Love about Port St. Lucie" Results



What do you **LOVE** about Port St. Lucie?

• Quiet and safe place to live ✓

Kid Focused *

Summer camps ✓ Parks

Playgrounds!

-very nice

The Natural AREAS like
Parks and Nature trails

Parks, Safe, friendly, accessibility to ✓
everything

Everything! Focus on family, community! Simply awesome! ✓

The Community, Neighbors, Quiet peaceful

Limited housing areas
CAP The Building of
Houses at a certain
number please

I love my city. I love the safety and people.

SAFE PLACE TO LIVE
NATURE TRAILS ✓✓✓

I love the Park The park
I love the ch I love my neighbors

Working for community



Appendix E. "Community Idea Wall" Results

COMMUNITY IDEA WALL

Want to share an idea with the project team that does not match with the other activities around the room? Place your thoughts below

- electric bike parking / secure place
- Need a permanent, larger RC park ✓✓✓✓✓ No High rises
- Add a motorsports park ✓✓ more walking trails ✓ the tallest building taller the jate tower only the space building
- water park ✓✓ like Noah's Ark in WI ✓
- Water park ✓✓
- More trails + preserves. ✓✓
- more roads ✓
- Less toxic ✓
- Stop speeding & other traffic violations
- ease traffic ✓
- more open space ✓
- Wildlife corridors ✓
- MORE STREET LIGHTS
- This Summit is wonderful, love all information but it needs to be in a larger place ✓
- Develop walkway/bikeway ✓ along the C24 canal from turnpike to I-95 w/solar lighting & benches
- MORE SIDEWALKS & STREET LIGHTS
- Transportation to West Palm - reg. hours ✓
- Summer Camps that includes Academics ✓
- a way from school to Fort Pierce
- a more consistent unified ~~storage~~ commercial sign policy ✓
- Need a good Mall
- Need A Town Center ✓✓
- more chip houses ✓
- CO-WORKING SPACE ✓
- Need a wall ✓
- Pools ✓
- Art / Fresh Market area (District Ct.) ✓ with space for all families, music, pets, parks. ✓
- more private SCHOOLS
- MAMI GOOD RESTAURANT
- Trails ✓
- Walking trails ✓
- I Live near

Great Busses! ✓ Transportation ✓

More activities for professional networking ✓
↳ @psbusinessclub

More Buses for older to me to use with ramp etc.,

QR Code

<https://link.cityofpsl.com/compplan>

CHARTING
PORT ST. LUCIE
2045

COMMUNITY IDEA WALL

Want to share an idea with the project team that does not match with the other activities around the room? Place your thoughts below

1 WOODS mountainbike trails
wakeboard park ✓

• performing Arts Center

Cultural Arts Center for literature + visual art

Develop a "Blue ZONE" community, walking, community, nutrition, exercise.

water parks | | |

*all parks + rec - multi-generational + differently-abled access considerations ✓

Group activities for 15-17yr olds

Every resident should pick up 4 pieces
of trash + put in parkway / recycle bin weekly

ESport's Center

Affordable / Free Summer camps

Spring camps
events

More Free events for kids 5-12
on the weekends

SUMMER CAMPS.

More recreation for
young Adults.

climbing walls!
water parks!

More fitness classes
after 5:00 pm

More Waterparks/rollercoasters.

Kids Museums!

More jump parks
5-13

Waterpark

more playgrounds

parks with
ramps

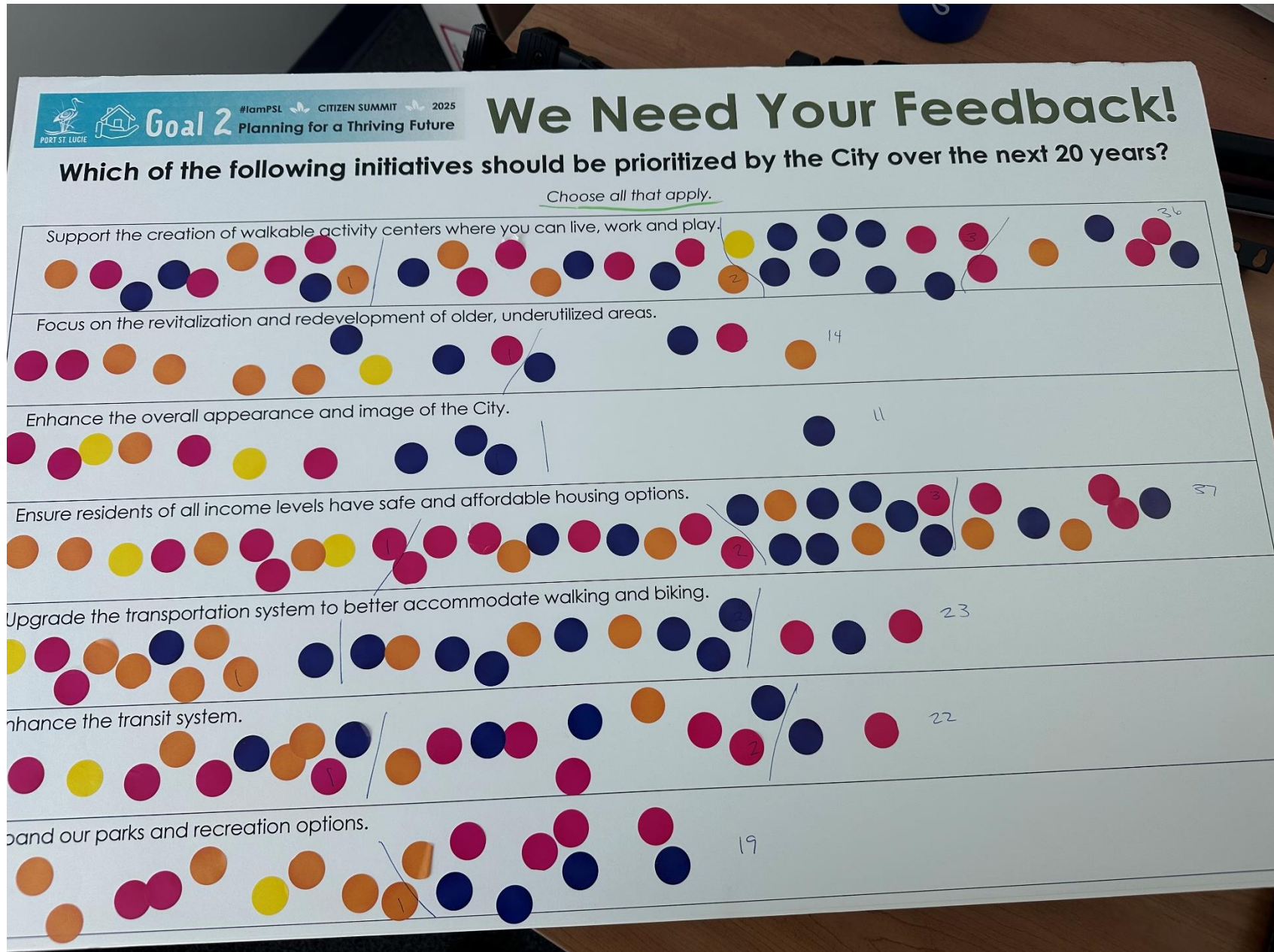
skateboard
w/ flat &
skated &
supplies
for balance
bike

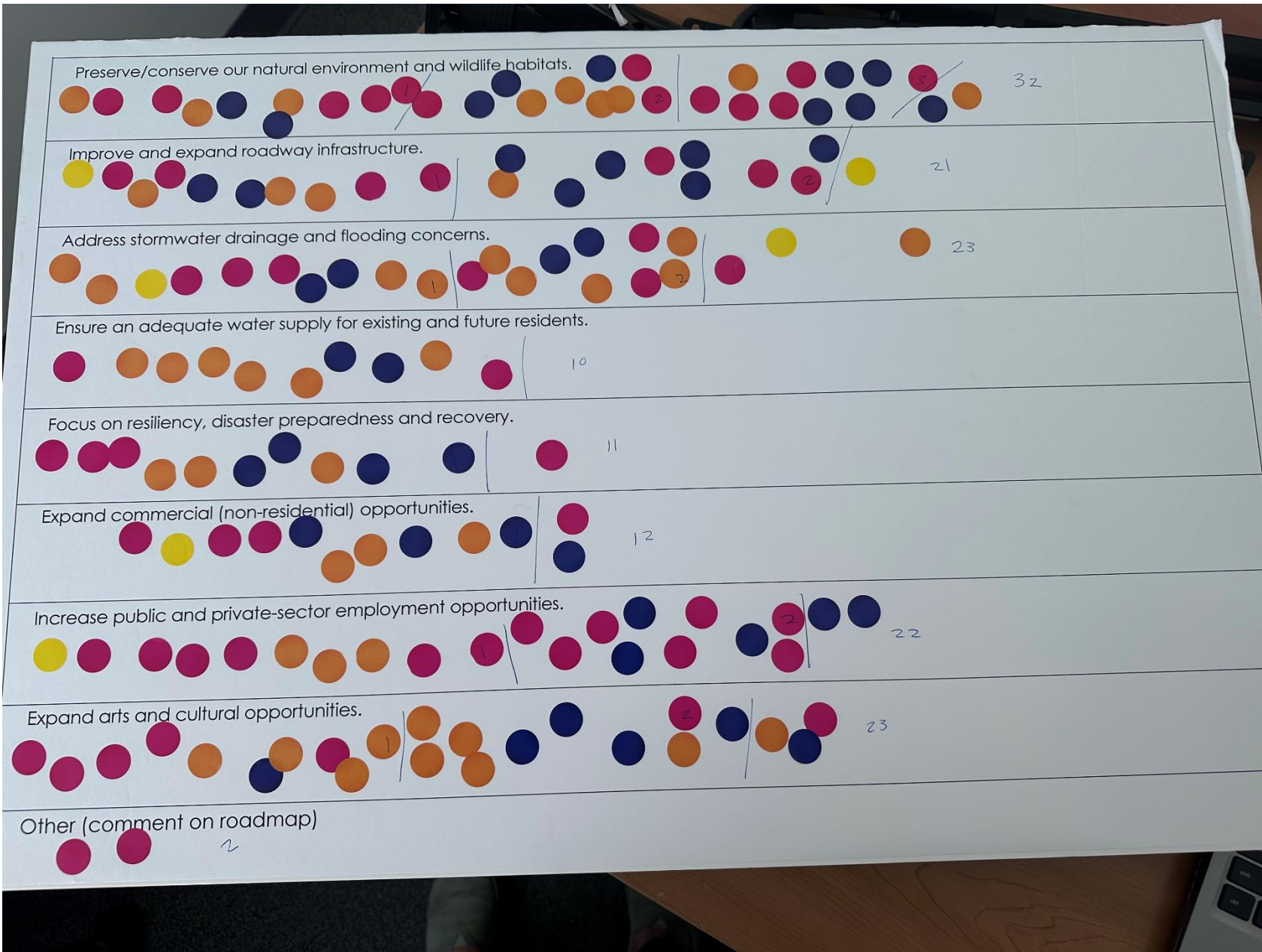


<https://link.cityofpsl.com/compplan>



Appendix F. Survey Results







Goal 2

#iamPSL CITIZEN SUMMIT 2025
Planning for a Thriving Future

We Need Your Feedback!

Which of the following initiatives should be prioritized by the City over the next 20 years?

Choose all that apply.

	Single-family homes	52
	Townhomes	10
	Duplexes and triplexes	14
	Moderately sized apartment buildings (between five and 50 units)	16
	Large apartment complexes (more than 50 units)	5
	Age-restricted communities/housing	12
	Mixed use housing (i.e., residential located above retail/office spaces)	35
	Mobile homes	2
Other (comment on roadmap) ADU, Tiny Homes for homeless		7