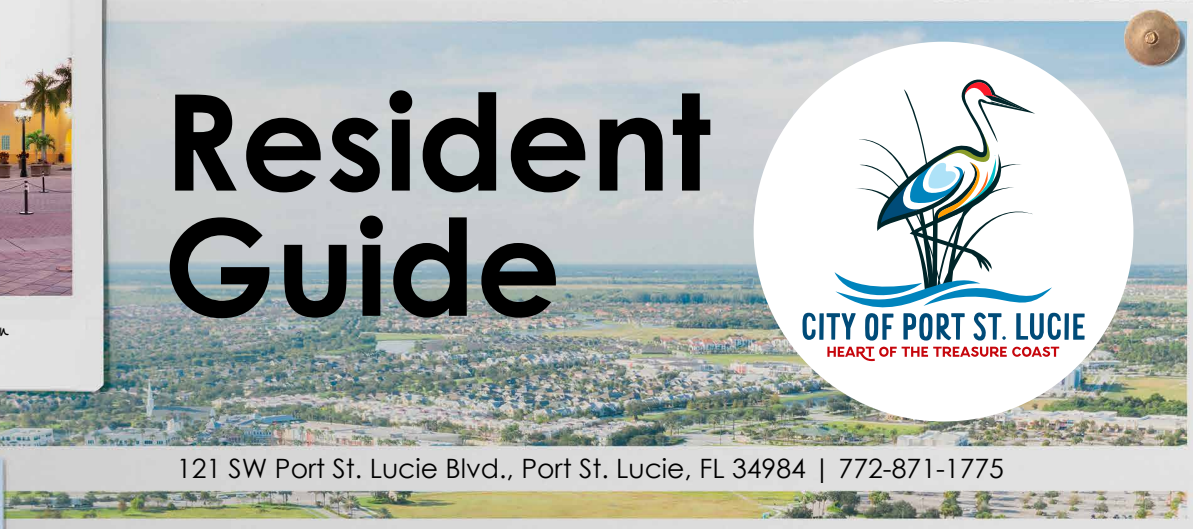


MIDFLORIDA Credit Union
Event Center

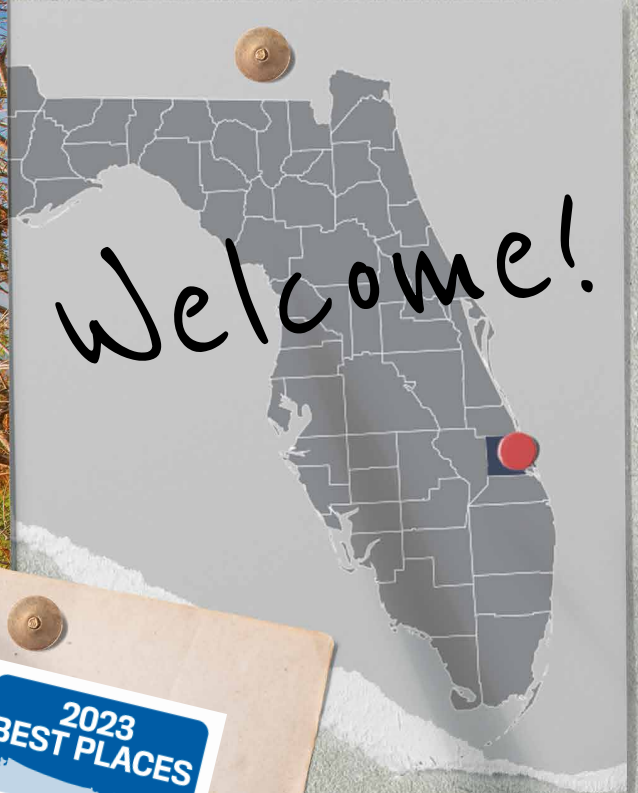
Resident Guide



121 SW Port St. Lucie Blvd., Port St. Lucie, FL 34984 | 772-871-1775



own Grand Opening
9-28-2019



2023
BEST PLACES
U.S. News & WORLD REPORT
PORT ST. LUCIE
#2 SAFEST
#5 FASTEST GROWING
#10 MOST DESIRABLE
#18 FOR WEATHER
#19 FOR SINGLES
#22 TO RETIRE
#25 FOR YOUNG PROFESSIONALS
#63 BEST PLACE TO LIVE
IN THE UNITED STATES

Table of Contents

4	Top Things Residents Should Know
6	Stay Informed
7	Strategic Plan Goals
8	City of Port St. Lucie Facilities
9	City of Port St. Lucie Contacts
10	St. Lucie County Contacts
11	Your Tax Bill Explained
12	Utility Systems Department
13	Police Department
14	Speeding Prevention
15	Animal Control
16	Office of Emergency Management
17	Storm Shutters
18	Neighborhood Services
23	Swales
24	Building Department
25	Office of Solid Waste
26	Things to Do
26	Public Art
27	Clover Park
29	Keep Port St. Lucie Beautiful
29	The Saints Golf Course
30	Parks & Recreation
34	MIDFLORIDA Event Center
36	Visitor Information
41	Community Redevelopment Agency
42	A-Z List

Heart of the Treasure Coast

Port St. Lucie has topped numerous Best Places lists in national and international publications, including U.S. News & World Report, Realtor.com, BankRate.com and more. To read all about them, visit CityofPSL.com/GoodNews.

Stewards of the Environment

Our leaders have been fighting for our rivers and natural resources at a local level for the past 20 years through a variety of efforts. These include one of the largest septic-to-sewer conversions in the country, building hundreds of acres of stormwater treatment areas, the St. Lucie River/C23 Water Quality Project and Eastern Watershed Improvement Project.

Clean and Beautiful

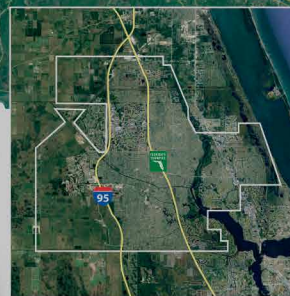
The City is nearly litter-free, according to the Keep America Beautiful Community Appearance Litter Index. This distinction is the result of continuous hard work by our residents, businesses and visitors.

Statistics

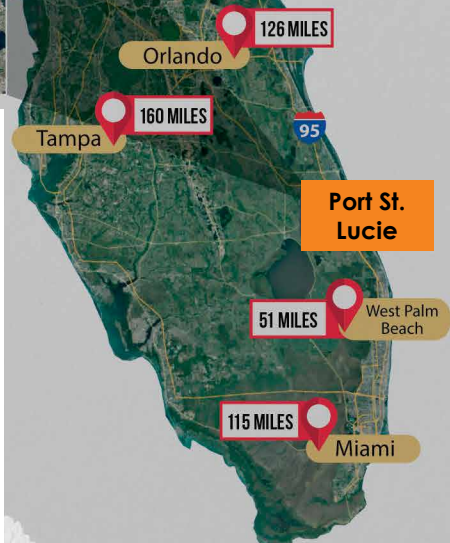
- U.S. News & World Report named Port St. Lucie as the second safest city in the country.
- Quicken Loans named Port St. Lucie as the No. 5 fastest-growing city in the U.S.
- Patch.com named Port St. Lucie No. 4 most ethnically diverse city in Florida
- Opendoor.com named Port St. Lucie No. 19 hottest ZIP code in the nation. (34953)
- WalletHub:
 - » No. 9 best local real estate market.
 - » No. 4 best place for first-time homebuyers.
 - » No. 6 city for Hispanic entrepreneurs.

WITH NEARLY 240,000 RESIDENTS,
PORT ST. LUCIE IS THE

2ND LARGEST CITY IN SOUTH FLORIDA
6TH LARGEST CITY IN THE STATE



The City of Port St. Lucie spans 120 square miles.



Quality of Life

Nearly 80% of residents who participated in a statistically valid National Community Survey™ from 2018 through 2023 rated Port St. Lucie as an excellent or good place to live. Respondents' evaluations for the overall quality of life, neighborhoods, the City as a place to retire, raise children and live — and the overall appearance and image — have each improved considerably since a baseline survey was conducted in 2009. In fact, U.S. News & World Report ranked Port St. Lucie as the 10th most desirable city in 2023. We're proud to be the spring training home of the New York Mets, as well as the new home of the Florida Sports Hall of Fame.

Top Things New Residents Should Know

City Council

The City is led by a five-member elected Council, which sets policy and determines the long-term vision for the City. The Council appoints a City Manager to handle the daily business affairs. This system is called a Council-Manager form of local government. Each Council member has one vote, including the Mayor, so legislative authority is equally spread among all five members.



Mayor
Shannon Martin



Vice Mayor
Jolien Caraballo,
District 4



Councilwoman
Stephanie Morgan,
District 1



Councilman
David Pickett,
District 2



Councilman
Anthony Bonna, Sr.
District 3



City Manager
Jesus Merejo

Find your district on the City Council District Representative Map at CityofPSL.com/Council

Garbage at a Glance

Page 25

Customers are given a black garbage cart with wheels and a green recycling cart with wheels.

Bagged garbage and loose recycling are collected inside the City-issued carts, and 4 cubic yards of yard waste, which equals two standard size refrigerators or four standard ovens, are collected once a week. Two cubic yards of bulk waste, which equals one standard size refrigerator, is collected once a month on the same designated day.

Residents can drop off yard and bulk waste five days a week at the City's Convenient Drop-off Center.

Find your collection day at CityofPSL.com/SolidWaste

Page 12

If you are connected to the City's sewer system and there is a problem with the sewer system, an alarm will sound from the control panel on the side of your home, and a small red alarm light will light up.

Report the warning immediately by calling 772-873-6400. A Connection Support Specialist is available 24/7, 365 days a year, and will give you instructions on how to silence the alarm and will dispatch a technician to identify and address issues.

To convert from septic to sewer and learn how the conversion benefits you and the community, visit CityofPSL.com/Sewer.

What should I know about my sewer system?

What is a swale? Page 23

Swales are long, narrow depressions that can be along sidewalks, streets, parking lots and driveways that filter pollutants, prevent erosion, and store water during storms. Swale maintenance is crucial to provide positive conveyance, conserve water and prevent pollution.

Maintenance is the responsibility of the homeowner.

Learn more at CityofPSL.com/Swale

Property Taxes Page 11

In Florida, we don't pay state income tax, but if you own property, that property is assessed annually by the county property appraiser.

To learn more about where your taxes go, visit CityofPSL.com/Taxes

- Property taxes will change when ownership changes, for structures and lots.
- Property taxes are a combination of City, county, school and other taxes.
- If you are a Florida resident, be sure to file for Homestead Exemption and other tax exemptions.

- If you are a Florida resident who is moving from a homesteaded property to another within the state, you can file for portability, which allows you to transfer some or all of your homestead assessment.

Before purchasing a home in Port St. Lucie, estimate your new property taxes by visiting www.paslc.gov and clicking on Tax Estimator or calling 772-462-1000.

Homeowner Builder Permits Page 24

Being a homeowner comes with responsibility, including projects that will require permits.

For checklists, applications, fees, in-person and online permitting, visit CityofPSL.com/Building.

Hurricane Preparedness Page 16

Are you PSL Prepared? Hurricane season runs from June 1 through Nov. 30. Residents should make preparations before hurricane season begins.

Residents can visit CityofPSL.com/Hurricane to find resources to navigate the season, before, during and after a storm hits.

- Make a plan.
- Consider the specific needs in your household.
- Build a kit.
- Familiarize yourself with evacuation routes.
- Stay informed by subscribing to City alerts at CityofPSL.com/StayInformed.
- Have a plan for pets, including pet kits and pet-friendly shelters.

Code Compliance Page 20

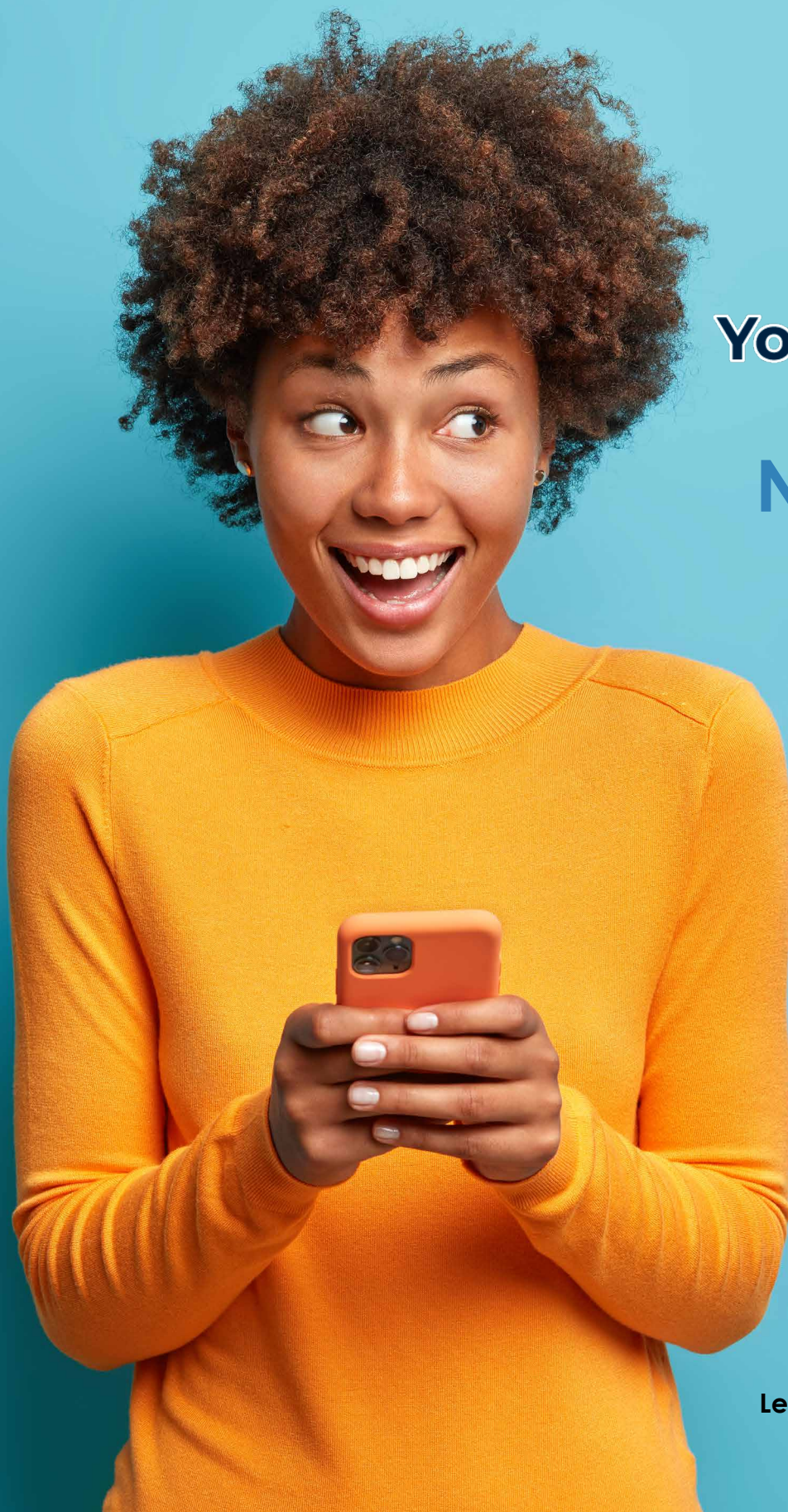
Help keep Port St. Lucie beautiful and safe by avoiding these common violations.

Code Compliance Specialists work routinely with residents and respond to requests for service.

To report a concern or learn about the codes, visit CityofPSL.com/Code.

Common codes include:

- | | |
|-----------------------|-------------------------|
| 1. High grass & weeds | 6. Inoperative vehicles |
| 2. House numbers | 7. Swale maintenance |
| 3. Swimming pools | 8. Property maintenance |
| 4. Fences | 9. Junk, trash & debris |
| 5. Storm shutters | 10. Signs |



1PSL



Your 24/7 City Hall

Now at your fingertips.

This all-in-one system allows residents to connect with the City either via mobile app, phone or web portal. Residents can use 1PSL to:

- Request services and ask questions
- Pay bills
- Learn about City news and upcoming events
- Pinpoint an issue location with GPS
- Attach a photo with your comments
- Receive status updates and resolution notifications

Get the 1PSL
App Today!



Learn more at CityofPSL.com/1PSL

Mission

To provide exceptional services that enhance our community's safety, beauty and quality of life through innovation, engagement and fiscal responsibility.

Vision

To be a leader in finding innovative solutions that put residents first and support opportunities for all people to thrive.

CityofPSL.com/StrategicPlan

- | | |
|--|---|
|  Safe, Clean and Beautiful |  High-Quality Infrastructure and Facilities |
|  Vibrant Neighborhoods |  Culture, Nature and Fun Activities |
|  Smart & Connected City |  High-Performing City Government Organization |
|  Diverse Economy and Employment Opportunities | |

You can stay connected and informed about the City of Port St. Lucie in a variety of ways:

- E-newsletters
- Call or text alerts
- Social media
- 1PSL
- The Pulse
- Agendas/meetings

SIGN UP HERE

CityofPSL.com/StayInformed



The City of Port St. Lucie Facilities



Hours for City Hall Locations

121 SW Port St Lucie Blvd., Port St. Lucie, FL 34984
772-871-1775 (1PSL)

City Hall (Building A)

Monday–Friday, 8 a.m. to 5 p.m.

Building Department (Building B)

Monday–Friday, 8 a.m. to 5 p.m.

Building Department Lobby:

Monday, Tuesday, Thursday, Friday, 8 a.m. to 4:30 p.m.
Wednesday, 8 a.m. to 4 p.m.

Police Department (Building C)

24 hours a day, 7 days a week
Records, Monday–Friday, 7:30 a.m. to 5 p.m.

Utility Customer Service, Building A

Monday–Friday, 8 a.m. to 5 p.m.

utility@CityofPSL.com

By appointment only.

Office of Solid Waste, Building A

Monday–Friday, 8 a.m. to 5 p.m.

772-871-1775 press #5

Hours for City Facilities

MIDFLORIDA Event Center

9221 SE Event Center Place, Port St. Lucie, FL 34952

Monday–Friday, 8 a.m. to 5 p.m.

Recreation & Fitness:

Monday–Thursday, 6 a.m. to 9 p.m.

Friday, 6 a.m. to 8 p.m.

Saturday–Sunday, 7:30 a.m. to 6 p.m.

Port St. Lucie Community Center

2195 SE Airoso Blvd., Port St. Lucie, FL 34984

Daily, 8 a.m. to 8 p.m.

Robert E. Minsky Gymnasium

750 SW Darwin Blvd., Port St. Lucie, FL 34953

Daily, 8 a.m. to 8 p.m.

Botanical Gardens

2410 SE Westmoreland Blvd., Port St. Lucie, FL 34952

Tuesday–Saturday, 9 a.m. to 5 p.m.

Sunday, noon to 5 p.m.

The Saints Golf Course

2601 SE Morningside Blvd., Port St. Lucie, FL 34952

Daily, 6:30 a.m. to 5:30 p.m.

Driving Range: 6:30 a.m. to sunset.

**Closes at 4 p.m. on Wednesdays for maintenance.*

City of Port St. Lucie Contacts

Incorporated in 1961, The City of Port St. Lucie is part of St. Lucie County. The City of Port St. Lucie occupies an area of 120 square miles and is located about 50 miles north of West Palm Beach.

Homeowners Contacts

Gas and Electric:

- Florida City Gas, 800-993-7546
- Florida Power & Light, 800-468-8243

Trash and Recycling Services:

- CityofPSL.com/SolidWaste
- CityofPSL.com/1PSL
- 772-871-1775 press #5

Telephone, Cable and Internet:

- Xfinity, 800-266-2278
- Blue Stream, 772-345-6000

Port St. Lucie Utility Connection Support & Billing:

- 772-873-6400
- utility@CityofPSL.com
- Available in person by appointment only.

772-871-1PSL (1775) **1PSL, Your 24/7 City Hall**

772-871-5042 **Animal Control**

772-871-5132 **Building Department**

772-344-4356 **Business Tax Office**

772-871-5294 **City Attorney's Office**

772-871-5157 **City Clerk**

772-871-5159 **City Council & Mayor**

772-871-5163 **City Manager**

772-807-4488 **MIDFLORIDA Credit Union Event Center**

772-871-5010 **Code Compliance**

772-871-5219 **Communications**

772-344-4342 **Community Redevelopment**

772-871-7340 **Emergency Management**

772-344-4390 **Finance**

772-344-4335 **Human Resources**

772-871-7000 **Keep Port St. Lucie Beautiful**

772-344-4342 **Lien Services Division**

772-871-5010 **Neighborhood Services**

772-878-2277 **Parks & Recreation**

772-871-5213 **Planning & Zoning**

772-871-5000 **Police (General)**

772-871-5100 **Public Works**

772-871-7371 **Risk Management**

772-340-0220 **St. Lucie West Services District**

772-871-1775 press #5 **Solid Waste**

772-873-6400 **Utility Connection Support
(available in person by appointment only)**

772-812-4858 **City of Port St. Lucie Volunteering**

St. Lucie County Contacts

Incorporated in 1905, St. Lucie County is comprised of the City of Port St. Lucie, the City of Fort Pierce (county seat) and St. Lucie Village. The latest Census figures from April 2023 determined Port St. Lucie's population is 239,653. St. Lucie County is 572 square miles and has 21 miles of coastline.

772-462-1400 **Board of County Commissioners**

772-462-6900 **Clerk of the Court**

772-462-1777 **Community Services Department**

772-336-8608 **Council on Aging**

772-462-1400 **County Administration**

772-462-1441 **County Attorney's Office**

772-595-9999 **Chamber of Commerce**

772-336-6250 **Economic Development Council**

772-462-2526 **Environmental Resources
Department**

772-621-3400 **Fire District**

772-871-2115 **Clover Park (St. Lucie Mets)**

850-488-4676 **Florida Fish and Wildlife
Conservation Commission**

772-462-1100 **General Information**

772-462-3800 **Health Department**

772-462-1000 **Property Appraiser**

772-462-1692 **Mosquito Control & Coastal
Management Services**

772-344-4060 **Port St. Lucie Driver License Office**

772-462-1650 **Port St. Lucie Driver License Office
& Motor Vehicle**

772-462-1670 **Office of Management & Budget
Department**

772-462-1432 **Parks, Recreation & Facilities
Department**

772-462-2822 **Planning & Development Services
Department**

772-462-8100 **Public Safety & Communications
Department**

772-462-2511 **Public Works Department**

772-871-2183 **Ravenswood Pool**

772-462-5000 **School Board**

772-462-7300 **Sheriff's Office**

772-871-1775, #5 **Office of Solid Waste**

772-462-1500 **Supervisor of Elections**

772-462-1650 **Tax Collector**

772-464-8878 **Treasure Coast Connector**

772-462-1660 **UF/IFAS Cooperative Extension**

772-462-1150 **Utilities Department Customer
Service**

772-337-5670 **Veteran Services Division**

772-462-1500 **Voter Registration**

772-785-5833 **Oxbow Eco-Center**

Your City property taxes explained

CityofPSL.com/Taxes

Example Property Tax Bill

In Florida, we don't pay state income tax, but if you own property in Florida, it is assessed annually by the county property appraiser. This assessment determines the amount of ad valorem taxes owed each year on your property. Ad valorem, or property taxes, are collected annually by the county tax collector.

Port St. Lucie residents pay property taxes to **16** different taxing authorities, including city, county, schools and other approved agencies. Taxes are based on the appraised value of a property, either business or residential. Florida law requires each county's tax collector to send one consolidated tax bill rather than have each government send separate tax bills to notify each property owner of their annual ad valorem and special assessment obligations. All local governments and special districts in St. Lucie County use this single tax bill.

The Port St. Lucie City Council does not control most of your tax bill. In fact, the City only controls two line-items: City of Port St. Lucie and Voter-Approved Debt (which paid for the Crosstown Parkway). That makes up only about 22% of your overall bill — the other 78% is controlled by other taxing authorities.

2021 REAL ESTATE NOTICE OF AD VALOREM TAXES AND NON-AD VALOREM ASSESSMENTS

Skip the trip and pay at www.tcslc.com

- echeck (electronic payment from your checking account with no fee)
- Credit card (2.5% convenience fee applies)
- Print your receipt instantly online!

Port Saint Lucie, FL 34953-3057

TAXING AUTHORITY	MILLAGE RATE	ASSESSED VALUE	EXEMPTION AMOUNT	TAXABLE VALUE	TAXES LEVIED
County Parks MSTU	772-462-1670	0.2313	243,765	50,000	193,765
Co Public Transit MSTU	772-462-1670	0.1269	243,765	50,000	193,765
Erosion District E	772-462-1670	0.1763	243,765	50,000	193,765
Law Enl/Judicial Sys	772-462-1670	2.8224	243,765	50,000	193,765
Co General Revenue Fund	772-462-1670	4.2077	243,765	50,000	193,765
Childrens Service Council	772-408-1100	0.4544	243,765	50,000	193,765
St Lucie Co Fire District	772-871-5069	3.0000	243,765	50,000	193,765
FL Inland Navigation Dist	561-627-3386	0.0320	243,765	50,000	193,765
City of Port St Lucie	772-871-5069	4.8807	243,765	50,000	193,765
City of PSL Voted Debt	772-871-5069	0.7193	243,765	50,000	193,765
School Discretionary	772-429-3970	0.7480	243,765	25,000	218,765
School Capital Improvmnt	772-429-3970	1.5000	243,765	25,000	218,765
School Reg Local Effort	772-429-3970	3.6050	243,765	25,000	218,765
School Voter Referendum	772-429-3970	1.0000	243,765	25,000	218,765
Mosquito Control	772-462-1670	0.1352	243,765	50,000	193,765
S FL Wtr Mgmt District	561-686-8800	0.2572	243,765	50,000	193,765
TOTAL AD VALOREM TAXES					\$4,832.64

NON-AD VALOREM ASSESSMENTS

LEVYING AUTHORITY	AMOUNT
PS61 Port St Lucie Stormwater Improv/Maint	168.00
PSSW PSL Solid Waste Assessment	281.92
TOTAL ASSESSMENTS	\$449.92

COMBINED TAXES AND ASSESSMENTS \$5,282.56

Pay One Amount (Discount Already Deducted) If Postmarked By Please Pay

Nov 30, 2021	Dec 31, 2021	Jan 31, 2022	Feb 28, 2022
\$5,071.26	\$5,124.08	\$5,176.91	\$5,229.73

2021 REAL ESTATE

Pay online at www.tcslc.com

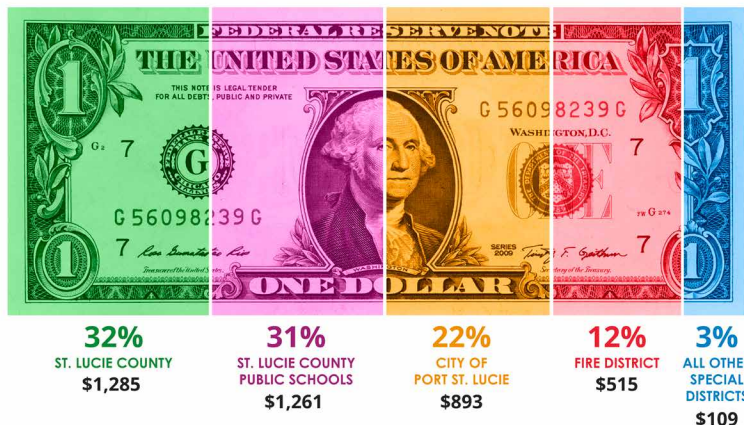
AMOUNT DUE

I am paying the following amount (check only one box):

Nov 30, 2021	\$5,071.26
Dec 31, 2021	\$5,124.08
Jan 31, 2022	\$5,176.91
Feb 28, 2022	\$5,229.73
Mar 31, 2022	\$5,282.56

Checks payable to St. Lucie County Tax Collector
U.S. funds only through U.S. bank
No postdated checks - Print receipt online

Where do your taxes go?



Check out the Balancing Act Tax Receipt Tool at CityofPSL.com/Taxes.

Tax Receipt is a tool where users input their property's taxable value and receive a tax receipt that shows how their property tax dollars are being spent on City services such as police, parks, recreation and public works.

Port St. Lucie has one of the lowest municipal property tax rates for a full-service city in Florida. One of City Council's top priorities is to lower the City's portion of the tax bill. Over the past eight years, the City's millage has decreased from 6.6289 in the FY 2015/16 to 5.2 for FY 2023/24.

Utility Systems Department

772-873-6400 | utility@CityofPSL.com | utility.CityofPSL.com

Emergency Service

The Utility Systems Department can be reached 24 hours a day, every day for emergencies.

Start or Stop Service

Applications to start new service in your name at a property with existing service can be done online. Once completed, all required fees will need to be paid to start service. A one-business-day advance notice is required or there will be a fee for same-day service.

Terminating Service

Requests to turn off service and out of your name can be done online. You will need to schedule a final meter reading. A final bill will be mailed to you with any deposits credited to the account.

Pay Your Bill

Customers are billed monthly for water and/or wastewater service. The rates include a base facility charge and consumption charges. Your monthly payment can be made several ways. Payments can be made over the phone, online, by dropbox or by mail.

Water Quality

Port St. Lucie is committed to providing clean, safe and great-tasting drinking water to our customers. The drinking water provided by the Utility Systems Department continues to meet all federal and state requirements. Read the full report at CityofPSL.com/WaterQuality.

Education

Through presentations, educational videos and materials, the Utility Systems Department will visit your school or organization. Staff will demonstrate how the water and wastewater treatment process works and teach children the importance of protecting and maintaining our systems.

What's that sound?

Sewer alarm sounding/flashing at your home or your neighbor's? Instructions to silence the alarm can be found on the control box on the side of the house. Call 772-873-6400 for 24/7 service.

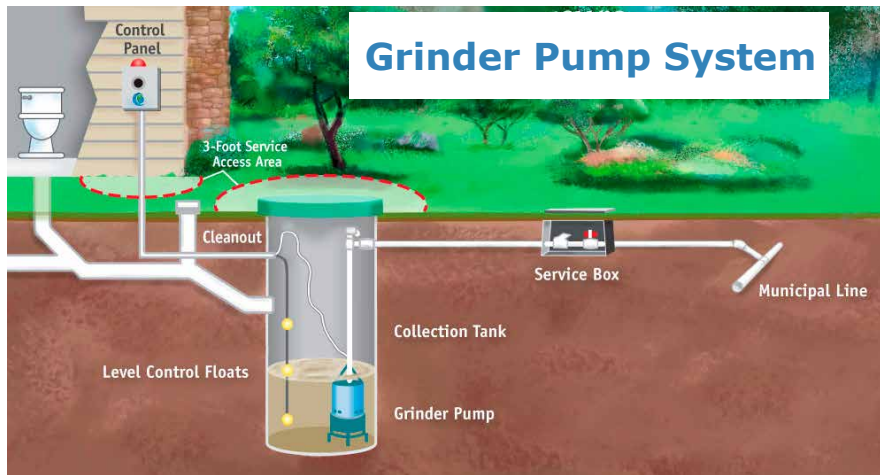
What to flush

Help prevent your house plumbing lines from clogging. Flush only toilet paper and human waste.

Sewer Expansion Program

The ongoing Sewer Expansion Program ensures that failing septic systems will be taken out of service to avoid further contamination to the shallow water supply, and that new homes and businesses would be required to connect to City sewer. More than 10,000 residents have made the connection from septic to sewer since 1999. On average, Port St. Lucie has completed 350 conversions annually. From application to installation completion, the entire process takes 20-22 weeks with minimal interruptions to your sewer service.

Learn more at CityofPSL.com/Sewer.



10 Years, No Interest

When a resident needs or desires to connect to City sewer, the homeowner can finance their connection fees over a 10-year period with no interest. For current rates, visit utility.CityofPSL.com.



Protect our canals from pollution



Prevent leakage of waste to the ground water



Recycle water for irrigation & waste for compost

For more information about conversions, including fees and the application process, please call 772-873-6400.

Police Department

772-871-5000 | CityofPSL.com/Police

 PortStLuciePolice

 @PSLPolice

 portstluciepd



Explorers

The program is for young adults, ages 14 to 21, to get an up-close look at the criminal justice field through activities and community involvement.

Animal Control

772-871-5042

Animal Control enforces the City ordinances concerning the welfare and protection of all domestic animals and wildlife within the City. Call to report a lost or found pet.

Police Athletic League (PAL)

772-398-9436

Our 501(c)(3), nonprofit, crime prevention organization provides youth, ages 8 to 18 years, with the opportunity to become involved in educational, cultural and sporting activities, in an effort to help them reach their full potential in life.

Solicitors

Anyone who canvasses, goes door-to-door for sales or operates a mobile food wagon is required to obtain a solicitor's permit from the Port St. Lucie Police Department, which can be reached at 772-871-5000. In some cases, an occupational license may also be required in addition to a solicitor permit.

Partners Against Crime

Partners Against Crime is a new program offered by the Port St. Lucie Police Department that focuses on strengthening partnerships between the community and police department. This will be accomplished through increased communication and interactions with local businesses in our city.

Citizens Police Academy

772-344-4052

The Port St. Lucie Police Department's Citizens Police Academy is an extension of our agency's community-oriented policing philosophy. The program offers City residents a preview into their police department's inner workings during a series of demonstrations, lectures and discussions. Each session gives the opportunity to listen to presentations and interact with representatives of the Command Staff, Neighborhood Policing Bureau, Criminal Investigations Division, Support Services areas and specialty units.

Help Keep Our Roadways Safe

Report Speeding in Your Neighborhood (Non-Emergency)

Are people frequently speeding on your residential street?

If you are aware of a dangerous condition or a continual traffic violation, please use 1PSL's mobile app, phone or web portal. Please be as detailed as possible so we may better be able to resolve the problem. NOTE: If this is an emergency, please call 911 to immediately report the problem.

Three ways to report the problem to us:

- Call a 1PSL Navigator at 772-871-1775 (1PSL)
- Use the mobile app on Google Play and App Store.
- Access the web portal at CityofPSL.com/1PSL

Reporting a Dangerous Driver

If you see someone driving in a reckless manner, including swerving, speeding, texting or behaving aggressively, you should call 911.

Only call 911 if you feel the driver is posing a danger to other drivers, as 911 is intended for urgent situations. It should not be used for simple motor vehicle violations.

If you do call 911:

Be sure to pull over first so you stay safe and do not become a danger to others.

Tell the operator your location, a description of the vehicle and their direction of travel.

Do not attempt to follow the car or take cell phone pictures as these actions could increase the hazards of the situation.

Be sure to exercise caution and maintain a safe following distance from the dangerous driver.

If you can safely record the license plate number, state of origin and vehicle make, model and color, this will be useful for police to locate the offender. Before the officer dispatched can take any action, he or she will need to observe a violation or receive a witness report as to a violation, which can be your 911 call.



KEEP OUR ROADWAYS SAFE SPEEDING PREVENTION

Speed Prevention

772-871-5000 | [CityofPSL.com/Speeding](https://www.cityofpsl.com/Speeding)

Recognizing that speeding plays a major factor in serious injuries and fatal crashes, City Council voted Sept. 20, 2021, to reduce the speed limit to 25 miles per hour on neighborhood streets citywide. This was based on the recommendation provided by the City's consultant for the multi-modal plan. Keeping roadways safe is a shared responsibility. It is important that residents understand the significance of obeying speed limits and all traffic laws. Help prevent speeding by:

1. Checking your speedometer

Driving at or going below the speed limit gives both drivers and pedestrians more time to see each other and react safely.

2. Taking the pledge to avoid distracted driving

Distracted driving is one of the top reasons why drivers speed. Put it down and focus on driving.

3. Learning the cost of speeding

The City hopes that everyone chooses to drive at safe speeds and compliance will be our main measure of success. However, the Port St. Lucie Police Department is committed to keeping our City safe and will use enforcement to deter speeding violations.

4. Giving yourself more time

Avoid rushing and potentially speeding by allowing yourself extra time for travel and traffic.

5. Spreading the word

Stand united with your Port St. Lucie Police Officers by telling your friends, family and neighbors of the upcoming speed limit changes to 25 mph in residential neighborhoods.

On average, eight people are killed and 49 are seriously injured on Florida's roads every day. In the majority of those serious and fatal crashes, driver behavior is a contributing factor. Learn more about the City's Target Zero road traffic safety initiative aiming to eliminate fatalities and serious injuries involving road traffic at [CityofPSL.com/Speeding](https://www.cityofpsl.com/Speeding).

Animal Control

772-871-5042 | CityofPSL.com/AnimalControl

Living with Wildlife

Port St. Lucie is home to a variety of wildlife that have adapted to living in an urban environment. The majority have adapted their way of life around the fast living lifestyles of our residents and are rarely noticed.

However, there are occasions when wildlife and humans interact, and it is important to know and understand their role in our ecosystem. Port St. Lucie Animal Control can help residents identify local wildlife and provide information to ease concerns or remedy potential problems.

Orphaned Wildlife: If You Care, Leave It There

Do not touch or handle baby wildlife. The animal's mother is usually nearby feeding or caring for other young. If you believe the animal has been abandoned or its mother killed or injured, contact a wildlife rehabilitation center or dial 911 and request an Animal Control Officer.

Nuisance Wildlife

The Florida's Fish and Wildlife Conservation Commission defines "nuisance wildlife" as wildlife that causes (or is about to cause) property damage, presents a threat to public safety or causes an annoyance within, under or upon a building. Due to the regulations regarding the trapping and release of "nuisance wildlife," the City of Port St. Lucie Animal Control division cannot provide this service. Any healthy wildlife caught in a trap will be released onto the same property in which it was caught. A resident may contact a licensed wildlife trapper to remove nuisance wildlife. Consult your local telephone directory or myfwc.com for contact information.

Protected Wildlife

Florida's imperiled species are fish and wildlife species that meet criteria to be listed as federally endangered, federally threatened, state threatened or Species of Special Concern.

In Florida, the gopher tortoise is listed as threatened. Both the tortoise and its burrow are protected under state law. Gopher tortoises must be relocated before any land clearing or development takes place, and property owners must obtain permits from the FWC before capturing and relocating tortoises.

The Florida sandhill crane is protected by the U.S. Migratory Bird Treaty Act and as a state-designated threatened species by Florida's Endangered and Threatened Species Rule.

Common Florida Wildlife

- **Alligators:** A trap cannot be used to capture alligators. For alligators longer than 4 feet, the Florida Fish and Wildlife Conservation Commission should be contacted at 866-392-4286.
- **Bats:** Some important natural roost sites for Florida's bats are trees with cavities or peeling bark, palm trees, Spanish moss and caves.
- **Bobcats:** Along with the panther, the wild bobcat is one of two predatory big cats native to the Florida region. Bobcats are found throughout the state from the deepest swamps to suburban backyards.
- **Coyotes** are found in every Florida county. Coyotes are wherever there is suitable habit, regardless of whether or not they are seen.
- **Gopher tortoises** are a state threatened species and are protected under the Florida Administrative Code 68A-27. If their burrows will be impacted by construction or clearing it is important to follow proper permitting procedures to prevent harm to these tortoises.
- People may inadvertently put sandhill cranes at risk by feeding them. When cranes are fed, they learn to associate people with food and can lose their fear of humans. Also, help protect cranes by slowing down and watching for cranes crossing the road when you are driving, especially during breeding season. Learn more at <http://myfwc.com/>.

Community Cat Program

Free-roaming cat populations, sometimes referred to as "community cats," generally consist of a mixture of truly feral cats, semi-socialized cats and lost and abandoned pets.

The City of Port St. Lucie has adopted the practice of Trap Neuter Vaccinate and Return (TNVR) to resolve the concerns associated with feral and community cats and stem their ability to multiply.

Trap-neuter-vaccinate-return (TNVR) is the internationally accepted, effective and humane method of controlling free-roaming cat populations. It is a non-lethal alternative to the trap-and-kill method of attempting to manage cat populations.

Learn more at CityofPSL.com/Cats.

Office of Emergency Management

772-871-7340 | CityofPSL.com/EM

The City of Port St. Lucie has an All-Hazards Emergency Preparedness Plan that is flexible to any kind of declared emergency.

Plan & Prepare

While living in and visiting Port St. Lucie offers many benefits and advantages, it is important to keep in mind severe weather hazards and potential threats. Every family and business should have predefined emergency plans and always keep an emergency supply kit ready and stocked.

Get A Family Plan

Hurricanes, tornadoes and flooding are just a few of the many hazards Port St. Lucie is subject to — don't wait until disaster strikes, develop a family plan today! Your family may not be together if a disaster strikes, so it is important to know which types of disasters could affect your area. Know how you'll contact one another and reconnect if separated. Establish a family meeting place that's familiar and easy to find.

Build a Kit

After an emergency, you may need to survive on your own for several days. Being prepared means having your own food, water and other supplies to last for at least seven days. A disaster supplies kit is a collection of basic items your household may need in the event of an emergency.

Stay Informed

When emergencies strike, public safety officials use timely and reliable systems to alert you. Learn more about the different warning alerts you can get. Sign up for Alert St. Lucie today at stlucieco.gov/alert.

Did you know that homeowner's and renter's insurance does NOT cover flood damages? In order to get protection from flooding, you must buy flood insurance. You can find more information at CityofPSL.com/Flood.

Your knowledge and advance readiness will help you stay calm and organized in the event of an emergency or disaster. Learn more at CityofPSL.com/EM.

Hurricanes & Storms

Hurricane season runs June 1 through Nov. 30. Residents should prepare before the hurricane season begins.

Hurricane Preparedness Expo

This premier storm preparation event brings together dozens of businesses and emergency service providers with information and products that can help keep you, your home and your loved ones prepared and safe through hurricane season. You'll also learn the latest news through presentations by Emergency Management experts and meteorologists. The Hurricane Expo is usually held in early June. Check our website at CityofPSL.com/Calendar to learn more details.

Additional Contacts

- American Red Cross 561-833-7711
- Federal Emergency Management Agency (FEMA) 800-621-3362

Evacuations

- Evacuations are scheduled by County and City officials. If you are instructed to evacuate, have a plan.
- If you expect to evacuate your home in the event of a hurricane, plan where you will stay, how you will get there and what supplies you will take.
- If you need transportation to a public shelter because of a physical disability or a neurological or psychological disorder, register with the County Office of Emergency Management in advance. Do not wait until a storm approaches.
- If you or a family member receives home health care or depends on electrical life-support equipment, discuss emergency plans with your physician or agency representative and, if necessary, discuss with a hospital or special needs shelter to stay there if you must evacuate.

Storm Shutters



Why take them down?

Leaving a house shuttered creates safety issues, especially prohibiting occupants from safely and quickly escaping the house should an emergency take place inside.

City ordinance states that shutters must be removed within 14 days after the termination of a major storm. The City is requesting that all residents remove their shutters as soon as possible.

Protect your loved ones

In the event of a fire, shutters can limit access to you, your family and pets, as well as obstruct fire-fighting. These valuable moments can be the difference between life and death.

Storm shutter regulations

According to City Code Sec. 41.10 storm shutter regulations, storm shutters must be removed 14 days after a named storm leaves the area. It may be tempting to keep your hurricane shutters all year. However, hurricane shutters, which are designed to protect your home and family during a storm, can be unsafe and even deadly when left on your windows the rest of the year.

To learn more,
visit CityofPSL.com/ShutterCode

Let the light
shine through!

Neighborhood Services

772-871-5010 | CityofPSL.com/NICE



To better serve the community, the City is working with our neighborhoods to identify and correct specific issues and problems. The Neighborhood Services Department is responsible for many issues that affect individuals and their homes, neighborhoods and the larger community in Port St. Lucie. There are multiple divisions within the department, each with differing responsibilities.

We want to hear from you! You can find your neighborhood, sign up for e-newsletters, view the neighborhood meeting schedule and more by visiting CityofPSL.com/NICE. Each neighborhood has its own landing page where you can learn more about what the area has to offer and how you can get involved.

Want to improve your neighborhood?



**The strength of
our City is in our
35 neighborhoods!**

Join us and together we'll develop goals, including:

- Fitness stations
- Green space/parks
- Recreational opportunities
- Clean-up groups
- Crime watch groups
- Bike racks/benches
- Pet waste stations
- And more!

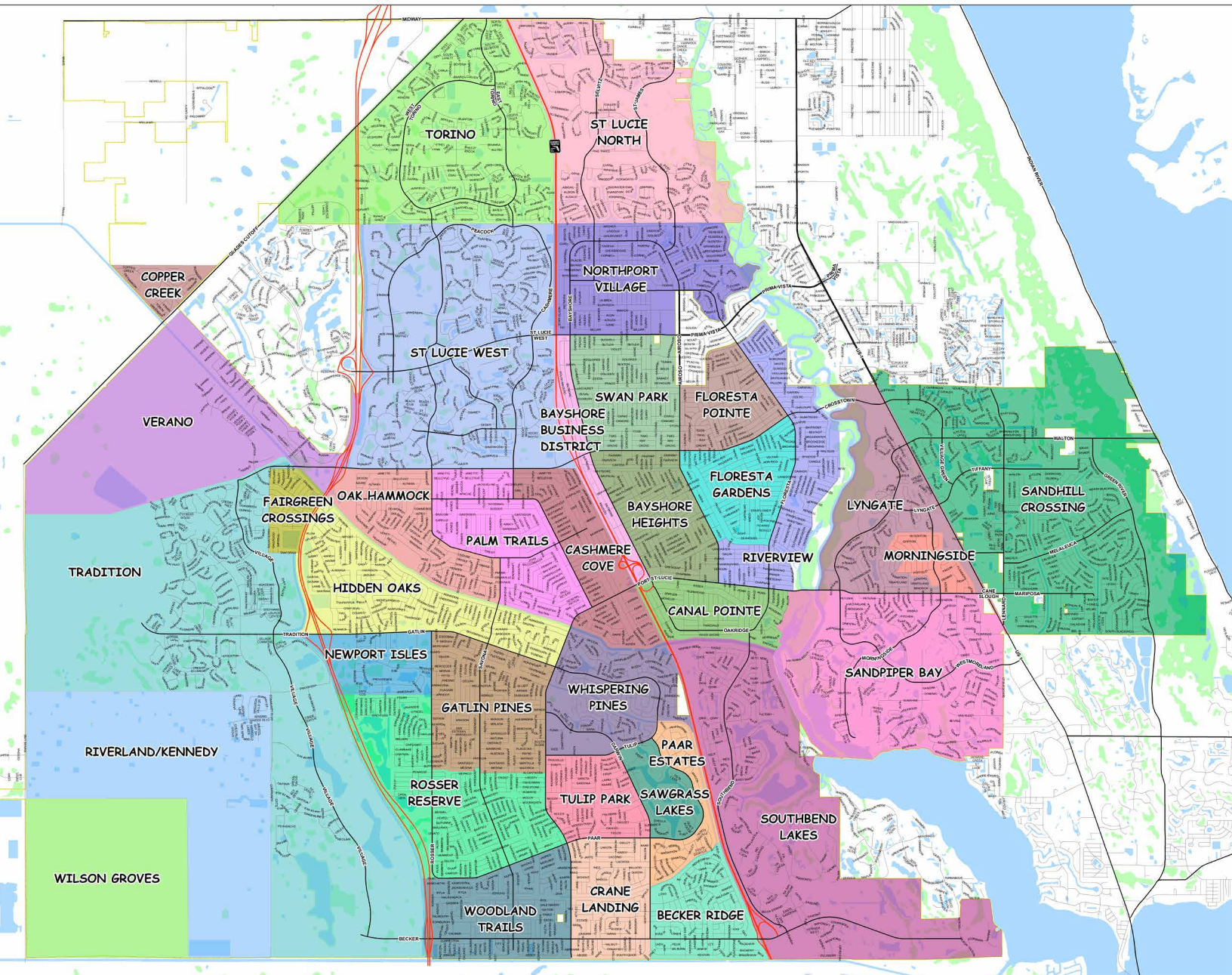


The City of Port St. Lucie's City University is a free nine-week program designed to help residents learn about their City government.

Become a City Ambassador! CityU is an interactive program that helps residents learn about services and operations through site tours, group discussion and hands-on experience.

Learn about the relationship between the citizens, City Council, its boards and commissions, and City administration. Learn how and why projects are undertaken and how services are provided. Receive an overview of the budget planning process, and many other responsibilities and functions of city government.

Not sure which neighborhood you live in? Check out the map below and learn more about your NICE neighborhood at CityofPSL.com/NICE



Code Compliance

Neighborhood Services

Port St. Lucie's Code Division is one of seven in the nation to receive a 4-Star Accreditation from the American Association of Code Enforcement.

Functions - 772-871-5010

The Code Compliance Division enforces property maintenance, safety and zoning codes that affect the quality of life in Port St. Lucie. Through education and enforcement, Code Compliance Officers facilitate compliance with City laws and code, empower community self-help and develop public outreach programs to help ensure attractive neighborhoods, vibrant businesses and a peaceful and enjoyable community for everyone.

The Importance of Code Compliance

- Protect the safety and welfare of Port St. Lucie residents
- Maintain and increase property values
- Reduce vandalism
- Eliminate blight

Nuisance Abatement Program

The Nuisance Abatement staff works to enforce property maintenance, safety and zoning codes that affect the quality of life in Port St. Lucie. It is designed to bring the property into compliance as soon as possible.

High Grass & Weeds

Grass cannot exceed 12 inches tall on all improved property (property with a structure built upon it) within the City of Port St. Lucie.

Commercial Vehicles

Commercial vehicles are prohibited from being parked or stored in all residential areas except while working at a job site. Examples include dump trucks, tow trucks or trucks with six wheels, step vans, chemical tank trucks and any pickup or van openly storing equipment, materials or supplies.

Vacant Lot Encroachment

This is a complaint-driven ordinance on unimproved lots where vegetation is encroaching onto the developed property abutting or adjoining the property line of the unimproved property from the tenant, property owner, lessee or occupants. Certain inspections and requirements will be necessary upon complaint entry.

Dumping

Dumping of trash, debris, construction materials, grass or tree clippings or other items anywhere within the City of Port St. Lucie is strictly prohibited. The City-contracted waste hauler, FCC Environmental Services, will pick up all items except hazardous waste when the items are placed at the curb of a residence. They will not pick up items that are put out by the roadway in front of a vacant lot.

Code of Ordinances

All City codes can be found on the City's website under the Government tab.

Garage Sales

Residents can advertise on the City's website free of charge. A garage sale shall not be run as a business or create a nuisance. Those holding garage sales are limited to one sign on their property advertising the sale. CityofPSL.com/GarageSale

House Numbers

For safety purposes, all buildings (residence and business) must have the address posted on the front of the structure and be clearly visible from the roadway. The numbers must be at least 4 inches high with contrasting color from the background color.

Inoperative Vehicles

Any vehicle that is not fully capable of being started and driven on the highway may be classified as inoperative. Examples of what may be considered as an inoperative vehicle(s) are: one or more flat tires, without tires, without a battery, up on blocks or without a current tag.

Open Storage

Any item or material that is kept, left or placed anywhere out of doors is considered as openly stored. This includes items placed, left or stored in carports, front/side or rear yards, inside/behind a fence or inside bed of a trailer.

Outdoor Sales/Special Events

Anything stored outside of the home is considered open storage and it has to be stored inside an enclosed structure.

Senate Bill 60: On June 29, 2021, Gov. Ron DeSantis signed Senate Bill 60 into law, which no longer allows code enforcement officers to investigate anonymous complaints. All code enforcement reports must include the complainant's personal information, including name and address. For any questions or concerns regarding this bill, please contact your State Representative at 850-717-5400.

Swales

The primary function of a swale is to maintain an acceptable swale grade in which to convey stormwater into the drainage right-of-ways. No pyramids, stones, stakes, shrubs or trees are permitted in the swale area. Swale areas must be kept free of trash, debris and litter to prevent obstruction of the driveway culvert and swale. If you wish to park in the swale area, you must seek permission from the property owner. Port St. Lucie's swale system will continue in PSL, but the plastic liner will be discontinued. Visit CityofPSL.com/Swale for more information.

Parking Prohibitions

Parking is prohibited on the wide part of the front lawn; upon any federal, state or local public right-of-way within the City or on any unimproved property for the principal purpose of displaying a vehicle for sale; any type of advertisement; not parking 12 inches off the paved roadway and with the flow of traffic.

Property Maintenance

The owners of a property within the City shall maintain the exterior of the premises in such a manner to conform with all City codes and ordinances. The exterior of all dwellings and structures shall be maintained in a manner as to be free of: broken glass, crumbling stone, brick or stucco; torn screens; rotted wood; mold and mildew; numerous broken/missing roof shingles; soffit and fascia missing or in disrepair; or any conditions reflective of deterioration or inadequate maintenance.

Recreation Vehicles

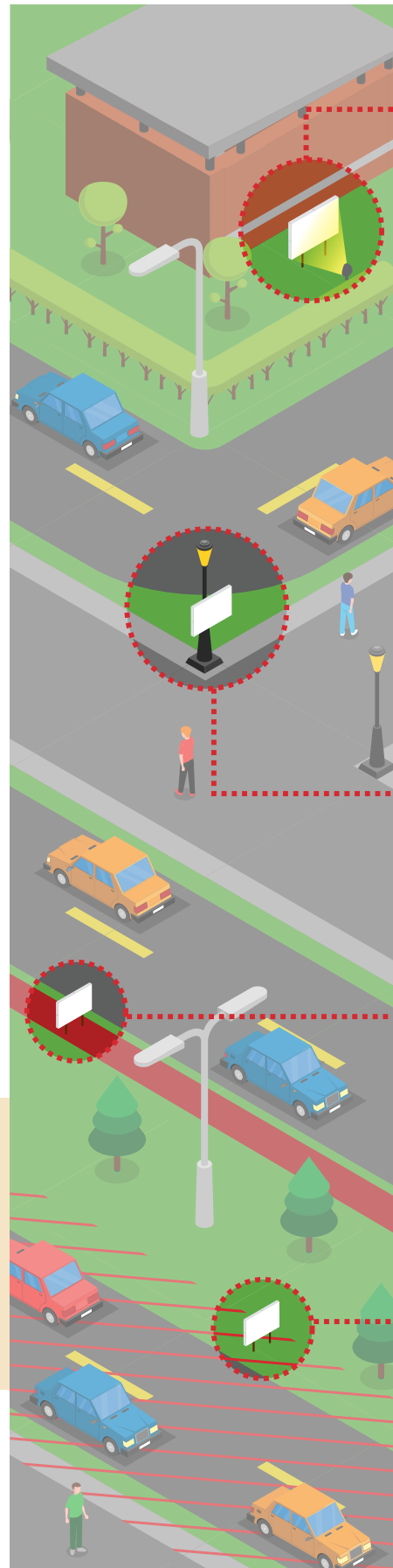
Vehicles registered as motor homes, recreational vehicles, campers, travel trailers, boats, etc., may be parked in the garage, driveway, side of the residence or 10 feet inside the rear yard. All recreational vehicles must bear a current registration and be in operating condition to be parked in any residential area within the City. No one may stay, live in or use the vehicle while it is parked or stored in a residential area.

Signs

Nearly all signs require a sign permit. The sign permit is issued through the Building Department, which can be reached at 772-871-5132. Signs attached to or placed upon any utility pole, street light, sidewalk, curb, fire hydrant, bridge or any other public property, including the swale area, median or public right-of-way, unless specifically authorized, are prohibited.

Visit CityofPSL.com/Signs for more information.

Temporary Signs



1

Private Property

- Obtain **permission** of the property owner if placing on private property.
- On commercial property, set the sign back at least 10 feet from the property line.
- On residential property, set the sign back at least 3 feet from the property line.
- Do not use display lighting.

2

Don't attach signs to **poles** or **street lights**.

3

Keep all temporary signs out of the **swale**. The swale is a shallow channel with sloping sides designed for water runoff.

4

Keep all temporary signs out of the **right-of-way**. The right-of-way may include the street, sidewalk and swales.

Stormwater Best Practices

CityofPSL.com/NPDES



The City's NICE program has funded pet waste stations throughout Port St. Lucie. Please take advantage of them when walking your pets!

When rain washes pet waste into swales or stormwater drains, pollutants are carried along to waterways. Pollutants found in pet waste can transmit diseases to humans. Pet waste also contains nutrients that encourage excess weed and algae growth. Be responsible and please pick up your pet's waste and dispose of properly.

Painting

All paints, solvents and adhesives contain chemicals that are harmful to wildlife and humans, which is why proper handling and disposal of these products is important. Toxic chemicals from liquid, solid products, cleaning residues or rags may enter waterways via the storm system. It is especially important not to clean brushes in an area where these contaminants are exposed to the weather and could be washed into the storm system during a rain event.

Automotive Maintenance

Many common car maintenance routines contribute to water pollution. Power washing engine blocks or pouring used motor oil into storm drains pollutes our waterways. These pollutants cause harm to plant and aquatic life. Oil and grease can clog fish gills and block oxygen from entering the water. If oxygen levels get too low, aquatic animals die.

Grass Clippings

Grass clippings and leaves are considered a source of pollution. When grass clippings and leaves decompose, they release nutrients. These nutrients can cause algae blooms in our waterways. Grass clippings should be bagged or blown back onto the lawn. Grass clippings and yard waste should never be blown or left in the street or storm drains as they adversely affect water quality.

Fertilizer

According to the City's fertilizer ordinance, no fertilizer containing nitrogen and/or phosphorus (phosphate) shall be applied to turf or landscape plants from June 1 to Sept. 30. No application of fertilizer shall be made when a flood, tropical storm or hurricane watch or warning is forecast, or more than 2 inches of rain is expected.

During the non-restricted season, Oct. 1 to May 31, nitrogen fertilizer must contain at least 50% slow-release nitrogen. Refer to the link below on how to determine slow-release nitrogen content in fertilizer.

No fertilizer containing phosphorus (phosphate) shall be applied anytime during the year, unless a soil test showing a deficiency is taken. Contact UF-IFAS Extension office for further information on testing at 772-462-1660 or CityofPSL.com/fertilizer.

Do not apply fertilizer within 10 feet from the top of the bank of any water surface, landward edge of the top of a seawall or wetland.

Keep fertilizer off hard surfaces, ditches, conveyances or water bodies; if spilled, clean up immediately. Keep grass clippings and landscape debris from being deposited into storm drains, ditches, surface waters and roadways to reduce runoff pollution.

Violations of this ordinance and its requirements can result in monetary fines.

Swales

772-871-5100
CityofPSL.com/Swale



Swales are designed to collect storm water and deliver the runoffs to canals and waterways prior to discharge to the river. It is the homeowner's responsibility to maintain a swale. Properly maintaining your swale helps with flood control.

Did you know?

It is normal for water to be in the swale area, especially during the rainy season (May through November). Allow seven days without further rainfall for the water to recede before submitting a request for service. Outside of the rainy season, most swales will recede within three days. Please report any drainage system issues such as blockages, erosion or damaged structures to our Customer Service Division at 772-871-5100. *If a roadway is underwater 24 hours after a rain event, please contact us immediately.

Street Lights

How do I request residential street lighting on my street?

The City Clerk's Office receives and processes requests for residential street lighting boundary areas per City Code Chapter 161. The annual fee for street lighting is placed on the property owner's tax bill and the Clerk's Office works on a yearly cycle to match the mailing of the tax bills. The annual City Council approved rate for the 2021 tax bill is \$26.

To pursue the installation of street lights on a public residential street in the City of Port St. Lucie the owner of a property on the street must submit a Request for Street Lights Form online, or one can be provided to you in a variety of ways by contacting the Clerk's Office at 772-871-5157.

The property owner requesting the creation of a street lighting boundary area will be provided with a preliminary light placement map, property owner information, explanation letter, additional request forms and a petition. It is required that a requester obtain signatures of 25% of the effected property owners prior to the residential street lighting boundary assessment area moving forward to the election ballot process. Learn more: CityofPSL.com/StreetLights



Building Department

772-871-5132 | CityofPSL.com/Building

Are you building a new residence, adding on or altering an existing structure?



The Port St. Lucie International Accreditation Service (IAS) Building Department is here to assist you and your contractor through the permitting process. Contractors can obtain permits 24/7 via the online permitting portal, providing fast, convenient and efficient services. The online application process allows for electronic submittal, routing, review and issuance of approved e-permit types. Contractors can track and manage their permit, upload revisions and download approved documents.

Did you know?

To improve customer service, reduce wait times and streamline the permitting process, the City established an innovative outdoor lane. The Building Department's drive-up window is the first in the nation to provide a convenient way for the public and contractors to pick up permits and public records, drop off inspections, plan reviews and various departmental paperwork.

Do I need a permit?

Building permits allow for the City to regulate construction and development activity in PSL to ensure all homes, buildings and structures are safe, and follow all guidelines and regulations. This is accomplished by examining project plans and conducting building inspections to verify compliance with the current Florida Building Code and local regulations. Every permit requires a building inspection. Visit CityofPSL.com/Building to learn more about permit types, how to apply for permit, building inspections and fees.

Office of Solid Waste

772-871-1775 press #5
CityofPSL.com/SolidWaste

The Office of Solid Waste is responsible for coordinating residential collection services in the City of Port St. Lucie for garbage, recycling, bulk items, yard waste and other materials. The Office of Solid Waste is also responsible for monitoring commercial operations and the enforcement of the City's Solid Waste Code of Ordinances (City Ordinance Sec. 50.06 (d) (4)).

Please place waste items curbside after 6 p.m. the night before pick-up. Use your City-issued garbage and recycling cart, before leaving it at the curb.



Bulky Waste - collected monthly

Bulky waste collection is intended for items too large to fit inside the garbage can. Bulky waste are items such as boxes, barrels, crates, furniture, mattresses, wood, exercise equipment, swing sets and basketball goals (broken down), refrigerators, stoves and other household appliances. Two cubic yard limit (once per month). To find your bulk waste day, visit CityofPSL.com/SolidWaste



Garbage - collected weekly

Garbage must be in a tied bag and in a covered bin to prevent it from filling with rainwater. Garbage cans are not provided by the City and should be no larger than 96 gallons and weigh no more than 50 pounds.



Recycling - collected weekly

What is single stream recycling?

Single stream recycling refers to the system in which all kinds of recyclables are put into a single bin by residents. Recyclables include items such as bottles, cans, jars and jugs made of aluminum, glass, plastic, steel and/or tin, along with cardboard, paper and paperboard.



Yard Waste - collected weekly

Yard waste is vegetative matter resulting from yard and landscaping maintenance, and includes, but is not limited to, shrub and tree trimmings, grass clippings, palm fronds, branches and bulky yard waste. When disposing of yard waste, cut tree limbs and branches to a manageable size, not exceeding 4 feet in length and 6 inches in diameter, excluding palm fronds. Individual containers cannot weigh more than 50 pounds and 4 cubic yard limit.



When there is a named storm and the projected path puts the City of Port St. Lucie near, or into, the cone of uncertainty, stop all outdoor maintenance and tree trimming activities.



Recycle Right

Help prevent good materials from going to the landfill. Check out the St. Lucie County Waste Wise Tool at StLucieCo.gov/Recycling. Just type in the name of the item, and the tool will provide you with the most up-to-date options for reuse and recycle options.



Hazardous Waste

Hazardous items are dangerous to put in garbage cans and recycling carts, but can be disposed of in two ways:

1. The St. Lucie County Sanitary Landfill, 6120 Glades Cut Off Road, Fort Pierce, accepts hazardous waste. Call 772-462-1768 for hours and for information about what will be accepted.
2. Twice a year, the City's Public Works Department hosts a free Hazardous Household Waste Collection Day. The department also has free drop-off sites at city buildings for rechargeable batteries, cell phones, etc.

Did you know?

There is a City Convenient Drop-Off Center, located at 1501 SW Cameo Blvd. on the corner of Cameo Boulevard and Crosstown Parkway. Proof of Port St. Lucie residency is required. Contact the City's Office of Solid Waste at 772-871-1775 press #5 for hours of operation.

*Hours are subject to change

Things To Do

Public Art

Public art adds enormous value to the cultural, aesthetic and economic vitality of a community. The Public Art program contributes to the community's identity, fosters community pride and a sense of belonging and enhances the quality of life for its residents and visitors.

The City was awarded funding from the National Endowment for the Arts to help with the development of an Arts Master Plan. The plan, adopted by the City Council in 2021, sets the standard for how we begin to implement and enjoy public art while also celebrating our community's ingenuity and artistic expressions. Types of art that can be found throughout the City include:

- Sculptures
- Traffic box cover art
- Fountains or water elements
- Earthworks and environmental artworks
- Decorative, ornamental or functional elements designed by an artist
- Murals, drawings and paintings
- Monuments

Be a part of the beautification process; learn more at [CityofPSL.com/PublicArt](https://www.cityofpsl.com/PublicArt).



ART IN
PUBLIC
PLACES



View the master plan at:
[CITYOFPSL.COM/ART](https://www.cityofpsl.com/ART)



Clover Park

31 Piazza Drive, Port St. Lucie
772-871-2132

Let's play ball! Clover Park is the spring training home of the New York Mets, summer home of the St. Lucie Mets and the hub for all New York Mets minor league operations. When the players are not in town, the Sports Complex, which is owned by St. Lucie County, is used for a variety of events ranging from festivals, concerts, baseball tournaments, RV shows and religious services. The stadium's seating capacity is 7,800.

Baseball games are a great way to connect with friends and family, enjoying a game that turns dramatic with the sharp crack of a bat. Don't just sit at home watching your favorite team on TV — get yourself to the stadium and be part of the excitement!

Get your tickets online
New York Mets: mets.com
St. Lucie Mets: stluciemets.com



Keep Port St. Lucie Beautiful

772-871-7000 | CityofPSL.com/KPSLB | KPSLB@CityofPSL.com

Keep Port St. Lucie Beautiful has been making our city shine since April 20, 2001. From beautifying neighborhoods to our Adopt-a-Street program, the foundation of neighborhood oriented government. At the forefront of beautification and urban transformation we educate and instill positive behaviors to promote litter reduction, improve recycling and continually beautifying our City.

Adopt-A-Street

Residents and businesses can assist with reducing litter in the City of Port St. Lucie. Volunteer by adopting a mile of road in your neighborhood and pick up litter at least 12 times a year. Volunteers will receive supplies and a sign will be placed along the road with your group name.

Events

KPSLB encourages the public to attend our events: Tree Giveaways, Household Hazardous Waste Collection Days and Caring Community Cleanup Day.

Committee

Keep Port St. Lucie Beautiful Committee consists of nine members and a coordinator. The committee addresses issues relating to the physical and visual aspects of our community environment.

Litter Hotline

772-871-7000

The City's litter hotline allows citizens to report conditions such as commercial or residential litter, illegal dumping, debris in a canal and general litter in Port St. Lucie. Free cigarette butt litter stands and ash receptacle cups are available while supplies last.

Tree Challenge

The City of Port St. Lucie is honored to be a Tree City USA. Residents and local businesses are asked to plant a tree as we continue to maintain our status and it is also a great opportunity to improve the urban tree canopy.

Hazardous Waste

Household hazardous waste cannot be picked up with regular household garbage but can be disposed in one of two ways: through the City's biannual Household Hazardous Waste Collection Day (March/October) or at the St. Lucie County Bailing and Recycling Facility.





The Saints Golf Course

The Saints offers great opportunities for men and women of all ages. The popular City Golf Championship is held in November each year for amateurs 16 years and older. A premier ladies' golf association plays here weekly. Junior golf programs for ages 7 to 17 are available throughout the year.

The Saints Golf Course is owned and operated by the City of Port St. Lucie. Located in a tranquil residential neighborhood, The Saints Golf Course consists of an exceptional 18-hole championship course, driving range and practice area. The Saints' clubhouse houses a fully stocked pro shop and a restaurant, pub and rentable banquet room.

Our goal is to provide you with a great golfing experience every time you tee the ball up. Our staff is dedicated, helpful and friendly. Please let us know how we can be of service. We hope you enjoy the game and our beautiful course.



2601 SE Morningside Blvd.
Port St. Lucie, FL 34953
772-398-2901 | saintspsl.com

History

The City of Port St. Lucie purchased The Saints Golf Course in 2001, and ever since, it has maintained the facility as a championship golf course. On several occasions, The Saints has been voted as the "Best Public Golf Course," by Hometown News. Since the original purchase of the course in 2001, the City has recognized The Saints as a true community asset and looks to continually evolve the facility as a premier destination for golfers of all ages.

The Saints offers an 18-hole championship golf course, an extensive practice area and excellent dining facilities. Visit us online to learn more about memberships, lessons and tournaments.



Become a member and receive:

- Reduced green fees
- Up to seven-day advanced tee-times
- 10% discount on in-stock pro shop merchandise (excluding golf balls)
- Reduced fees on range balls

Present your card at the time of check-in to receive your discount.

Parks & Recreation

772-878-2277 | PSLParks.com



Join the Parks and Recreation
Facebook group.



Programs

View the many programs offered at PSLParks.com or [Inside the Outdoors: A Parks & Recreation Guide](#).

Special Events

PSLParks.com/Events

- Bonfire Hayride
- Daddy Daughter Valentine Dance
- Dia de los Muertos
- Easter Bunny Breakfast
- Eggstravaganza
- City Gold Championship
- Fall Fun Fest
- Festival of Lights
- FAM Fest
- Freedomfest
- Green Art Showcase
- HallowTeen
- Harvest Hayride & Bonfire in the Preserve
- Holiday Luncheon for Special Populations
- International Fest
- Martin Luther King Jr. Family Fun Day
- Memorial Day Service
- Mother Son Dance
- Neighborhood Scarecrow Competition
- Noche Buena
- Oktoberfest
- Pancakes with Santa
- River Nights
- Senior Dance
- Spring Dance for Special Populations
- St. Patrick's Day Festival
- Super Spooky Halloween Dance for Special Populations
- Valentine Dance for Special Populations
- Veterans Day Ceremony
- Vet Fest
- Winter Wonderland Light Show



Port St. Lucie Community Center **2195 SE Airoso Blvd., 772-878-2277**

The Community Center amenities include banquet hall with stage, meeting rooms, kitchen and fitness center. There are a variety of recreational programs and services at the Community Center.



Humana Fitness & Wellness Center at MIDFLORIDA Event Center **9221 SE Event Center Place, 772-807-4499**

As part of the 100,000-square-foot MIDFLORIDA Event Center (formerly known as the Civic Center), the P&R Recreation and Fitness components of the facility offer the state-of-the-art Humana Fitness & Wellness Center, full-court gymnasium, game room, four indoor racquetball courts and so much more. Memberships available.



Robert E. Minsky Gymnasium **750 SW Darwin Blvd., 772-344-4142**

Minsky Gym is located within Whispering Pines Park and offers a wide range of activities for people of all ages. The amenities include 8,000 square feet of indoor gymnasium and two full-sized volleyball courts, or one full-sized basketball court.

Botanical Gardens

2410 SE Westmoreland Blvd., 772-337-1959

There is a \$5 per person suggested donation to help our Gardens grow. The Gardens is open 9 a.m. to 5 p.m. Tuesday through Saturday and noon to 5 p.m. Sunday. For more information, visit pslbg.org.



A lush, tropical oasis awaits you at the Port St. Lucie Botanical Gardens. Visitors to this 21-acre urban haven will see a collection of 12 separate garden rooms containing more than 2,000 species of tropical and subtropical plants, including natives, palms, roses, cactus, bromeliads, bonsai, bamboo and much more. The Botanical Gardens include a Secret Garden, our Faerie Forrest and native wetlands and mangroves. Stroll along the lake, sit on inviting benches and relax to the sound of water flowing from a nearby fountain. Take a moment to shop at our Garden Center or Gift Shop, or marvel at the wildlife, including osprey, great blue herons, sandhill cranes, gopher tortoises and more. The Gardens are a spectacular site for your special event, wedding or meeting, with event sites nestled amid enchanting gardens, a peaceful lake and native wetlands.

Dog Parks

Lyngate Park & Dog Park, 1301 SE Lyngate Drive

McChesney Park & Dog Park, 1585 SW Cashmere Blvd.

Woodland Trails Park & Dog Park, 1485 SW Calmar Ave.

Winterlakes Neighborhood Park, 5241 NW Jannebo St.



With acres to run and play, the off-leash dog parks are great spots for pups to exercise and socialize. Each dog park is securely fenced in and some of them include agility style equipment, a water fountain made just for dogs, doggie clean up bags and benches and/or pavilions for owners to lounge.

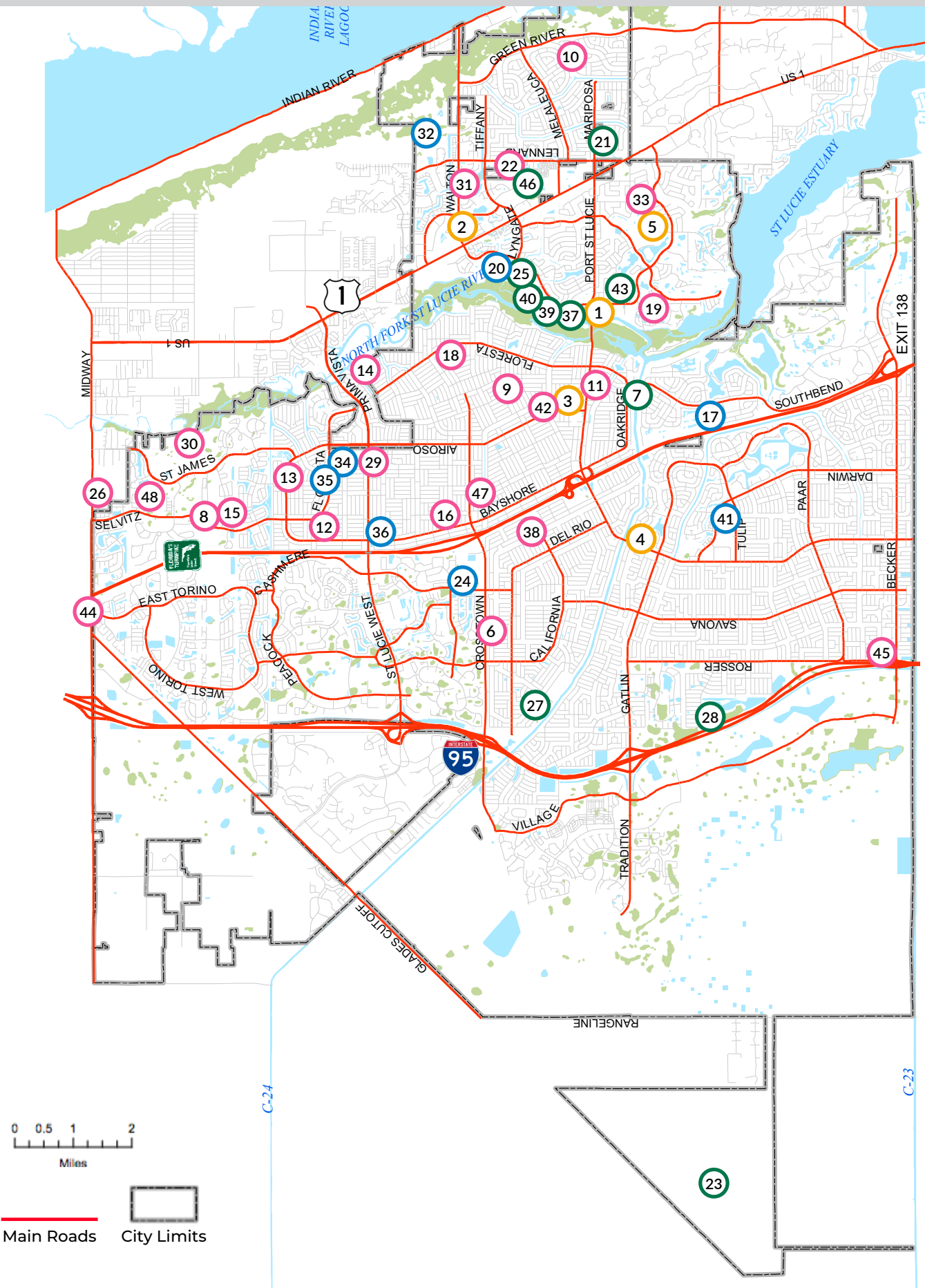
Not all dogs like to socialize. If your dog is timid or aggressive, leave them at home for their safety and enjoyment. All dogs must have a current license and be up to date on vaccinations.

Campsites: McCarty Ranch Preserve

12525 Range Line Road, 772-878-2277

Port St. Lucie's McCarty Ranch Preserve is known for its excellent hiking, biking, kayaking and fishing opportunities. Visitors can camp and stay in this primitive and rustic setting with 13 campsites and six RV trailer sites with boat and canoe launch, camping, disc golf, fishing, nature trails and open space. Bathroom facilities with showers are available on site. There is no parking, water connections or electricity at the sites.





Parks Map

1. **Botanical Gardens**, 2410 SE Westmoreland Blvd.
772-337-1959
2. **MIDFLORIDA Event Center Recreation & Fitness**
9221 SE Event Center Place, 772-807-4499
3. **Community Center/Parks & Recreation Main Office**
2195 SE Airoso Blvd., 772-878-2277
4. **Robert E. Minsky Gymnasium**, 750 SW Darwin Blvd.
772-344-4142
5. **The Saints Golf Course**, 2601 SE Morningside Blvd.
772-398-2901
6. **Apache Park**, 1449 SW Apache Ave.
7. **C-24 Canal Park**, 500 SE Oakridge Drive
8. **Charles E. Ray Park**, 5626 NW Manville Drive
9. **Doat Street Park**, 425 SE Doat St.
10. **Port St. Lucie Elks Lodge #2658/Friendship Park**,
2264 SE West Blackwell Drive
11. **Fred Cook Park**, 400 SE Glenwood Ave.
12. **Girl Scout Friendship Park**, 315 NW Heather St.
13. **Gulf Stream Park**, 210 NE Ardsley Drive
14. **Harborview Park**, 624 SE Harborview Drive
15. **Ian T. Zook Park**, 4648 NW Manville Drive
16. **Jaycee Park**, 1301 SW Bayshore Blvd.
17. **Jessica Clinton Park**, 3200 SE Southbend Blvd.
18. **Kiwanis Park**, 1320 SE Floresta Drive
19. **Loyalty Park**, 2810 SE Morningside Blvd.
20. **Lyngate Park & Dog Park**, 1301 SE Lyngate Drive
21. **Mariposa Cane Slough Preserve**,
2280 SE Mariposa Ave.
22. **Mary Ann Cernuto Park**, 2060 SE Grand Drive
23. **McCarty Ranch Preserve**, 12525 Range Line Road
24. **McChesney Park & Dog Park**, 1585 SW Cashmere Blvd.
25. **Midport Lake**, 2010 SE Veterans Memorial Parkway.
26. **Milner Drive Tot Lot**, 5160 NW Milner Drive
27. **Oak Hammock Park**, 1982 SW Villanova Road
28. **O.L. Peacock Sr. Preserve**, 1950 SW Dreyfuss Blvd.
29. **Ravenswood Racquetball Courts**,
400 SW Ravenswood Lane
30. **River Place Park**, 690 NW Bayou Country Lane
31. **Rotary Park**, 2101 SE Tiffany Ave.
32. **Sandhill Crane Park**, 2355 SE Scenic Park Drive
33. **Sandpiper Bay Park**, 1878 SE Westmoreland Blvd.
34. **Sportsman's Park**, 201 NW Prima Vista Blvd.
35. **Sportsman's Park West**, 220 NW Irving St.
36. **Swan Park**, 700 SW Carmelite St.
37. **Tom Hooper Park**, 2340 SE Rivergate Parkway
38. **Turtle Run Park**, 1945 SW Cameo Blvd.
39. **Veterans Memorial Park**,
2100 SE Veterans Memorial Parkway.
40. **Veterans Park at Rivergate**,
2200 SE Veterans Memorial Parkway.
41. **Whispering Pines Park**, 800 SW Darwin Blvd.
42. **Whitmore Park**, 474 SE Whitmore Drive
43. **Wilderness Park**, 2701 SE Westmoreland Blvd.
44. **Winterlakes Park & Dog Park**, 5241 NW Jannebo St.
45. **Woodland Trails Park & Dog Park**,
1485 SW Calmar Ave.
46. **Woodstork Trail**, 1957 SE Hillmoor Drive
47. **Bayshore Elementary School**,
1661 SW Bayshore Blvd.
48. **Southern Oaks Middle School**,
5500 NW St. James Drive

The City of Port St. Lucie has partnered with the St. Lucie Public Schools for public use of outdoor recreation areas during school days from 6 p.m. - sunset, and on weekends and non-school days 8 a.m. - sunset.



Facilities



Community
Parks



Neighborhood
Parks



Special Purpose
Parks

Large parks staffed with Parks & Recreation employees with lighted athletic fields that play host to organized sports leagues.

Small parks that are not staffed and offer no lighted amenities but may offer practice fields, play courts, playgrounds, restrooms and picnic facilities.

Parks that are designed to host specific functions like boat ramps, conservation areas and preserves, botanical gardens, and memorial parks.



MIDFLORIDA Event Center
9221 SE Event Center Place

772-807-4488 | midfloridaeventcenter.com

Monday-Friday, 8 a.m.-5 p.m.



The MIDFLORIDA Event Center is a premier, state-of-the-art special event facility with 100,000 square feet of indoor space. Along with two beautifully appointed ballrooms, the Event Center offers a large outdoor plaza and stage. The facilities are available for a wide variety of events and are home to many public gatherings and events throughout the year.

Amenities

Two grand ballrooms, outdoor plaza and stage, six-story parking garage, fitness center, art gallery, interactive fountain and boardwalk.

Art Gallery

The 2,000-square-foot gallery offers a professional venue to display local artwork. Four exhibits are displayed throughout the year, each opening with a reception, free for the public to attend.

Catering

The Event Center's award-winning in-house food and beverage provider awaits the opportunity to exceed your expectations with its culinary expertise during your event.

Florida Sports Hall of Fame

The Florida Sports Hall of Fame recognizes and honors Florida's greatest sports figures and events. Currently, more than 60 memorabilia exhibits are on display, including photos, videos, uniforms, apparel, sports equipment, trophies and more. Admission is free!

Interactive Fountain

The fountain is a refreshing and fun activity for all residents to enjoy, especially on those hot summer days!

9/11 Memorial

The City's 9/11 Memorial is located at the MIDFLORIDA Event Center Plaza. The memorial features an 11-foot section of metal girder from the fallen World Trade Center and is suspended above a fountain.





Conferences



Weddings & Receptions



Home of the Florida Sports Hall of Fame



Meetings



Live Entertainment



Trade Shows



Festivals



Fundraisers



Outdoor Concerts



Parties & Banquets

Visitor Information

*Plan a staycation!
visitstlucie.com*

Hotels



Best Western Port St. Lucie

7900 U.S. 1
Port St. Lucie, FL 34952
772-878-7600

Sandpiper Bay Resort by Wyndham

4500 SE Pine Valley St.
Port St. Lucie, FL 34952
772-398-5100

Hampton Inn & Suites Port St. Lucie West

155 SW Peacock Blvd.
Port St. Lucie, FL 34986
772-878-5900

Hilton Garden Inn at PGA Village/

Port St. Lucie

8540 Commerce Centre Drive
Port St. Lucie, FL 34986
772-871-6850

Holiday Inn Express & Suites Port St. Lucie West

1601 NW Courtyard Circle
Port St. Lucie, FL 34986
772-879-6565

Holiday Inn Port St. Lucie

10120 S. U.S. 1
Port St. Lucie, FL 34952
772-337-2200

Courtyard by Marriott

10251 SW Innovation Way,
Port St. Lucie, FL 34987
772-732-9300

Homewood Suites by Hilton Port St. Lucie – Tradition

10301 SW Innovation Way
Port St. Lucie, FL 34987
772-345-5300

MainStay Suites at PGA Village

8501 Champions Way
Port St. Lucie, FL 34986
772-460-8882

Residence Inn by Marriott Port St. Lucie

1920 SW Fountainview Blvd.
Port St. Lucie, FL 34986
772-344-7814

Sheraton PGA Vacation Resort Port St. Lucie

8702 Champions Way
Port St. Lucie, FL 34986
772-460-5700

Springhill Suites by Marriott Port St. Lucie

2000 NW Courtyard Circle
Port St. Lucie, FL 34986
772-871-2929

TownePlace Suites by Marriott

10460 SW Village Parkway
Port St. Lucie, FL 34987
772-272-1026

Tru by Hilton

11560 SW Village Parkway
Port St. Lucie, FL 34987
772-837-9810

Hospitals

**Cleveland Clinic Tradition Hospital**

10000 SW Innovation Way
Port St. Lucie, FL 34987
772-345-8100

HCA Florida St. Lucie Hospital

1800 SE Tiffany Ave.
Port St. Lucie, FL 34952
772-335-4000

HCA Florida Lawnwood Hospital

1700 S 23rd St.
Fort Pierce, FL 34950
772-461-4000

Airports

**St. Lucie County Airport**

3000 Curtis King Blvd.
Fort Pierce, FL 34946
772-462-1732

Palm Beach International Airport

1000 James L. Turnage Blvd.
West Palm Beach, FL 33415
561-471-7400

Orlando International Airport

1 Jeff Fuqua Blvd.
Orlando, FL 32827
407-825-2001

Fort Lauderdale International Airport

100 Terminal Drive
Fort Lauderdale, FL 33315
954-359-1200

Transportation

**Area Regional Transit (ART)**

772-464-8878
SLCRide.org

SLC Community On-Demand MicroTransit

772-464-7433 (RIDE)
SLCRide.org



A person is sitting on a tall stack of books, reading a magazine. The person is wearing blue jeans with the cuffs rolled up. The stack of books is on the left side of the page, and the person's legs are crossed. The background is a bright, slightly blurred indoor setting.

Libraries

There are seven libraries in St. Lucie County and four within the City limits. You can find locations and contact information at stlucieco.gov/library.

Morningside Branch

2410 SE Morningside Blvd.
Port St. Lucie, FL 34952
772-337-5632

Paula A. Lewis Branch

2950 SW Rosser Blvd.
Port St. Lucie, FL 34952
772-871-5470

Port St. Lucie Branch

180 SW Prima Vista Blvd.
Port St. Lucie, FL 34983
772-871-5450

Pruitt Campus Library

500 NW California Blvd.
Port St. Lucie, FL 34986
772-336-6380

This library is a joint-use facility of Indian River State College and St. Lucie County. Hours are reduced during summer and class breaks.

St. Lucie Public Schools

772-429-3600

The mission of the St. Lucie Public Schools is to ensure all students graduate from safe and caring schools, equipped with the knowledge, skills, and desire to succeed.

The schools utilize an open-enrollment system where parents select from a variety of schools close to where they live. For a list of schools, including charter schools, visit stlucie.k12.fl.us

College/University

Indian River State College

3209 Virginia Ave.
Fort Pierce, FL 34981
772-462-4772

Keiser University

9400 SW Discovery Way
Port St. Lucie, FL 34987
772-398-9990

University of Florida IFAS

8400 Picos Road
Fort Pierce, FL 34945
772-462-1660

Florida International University

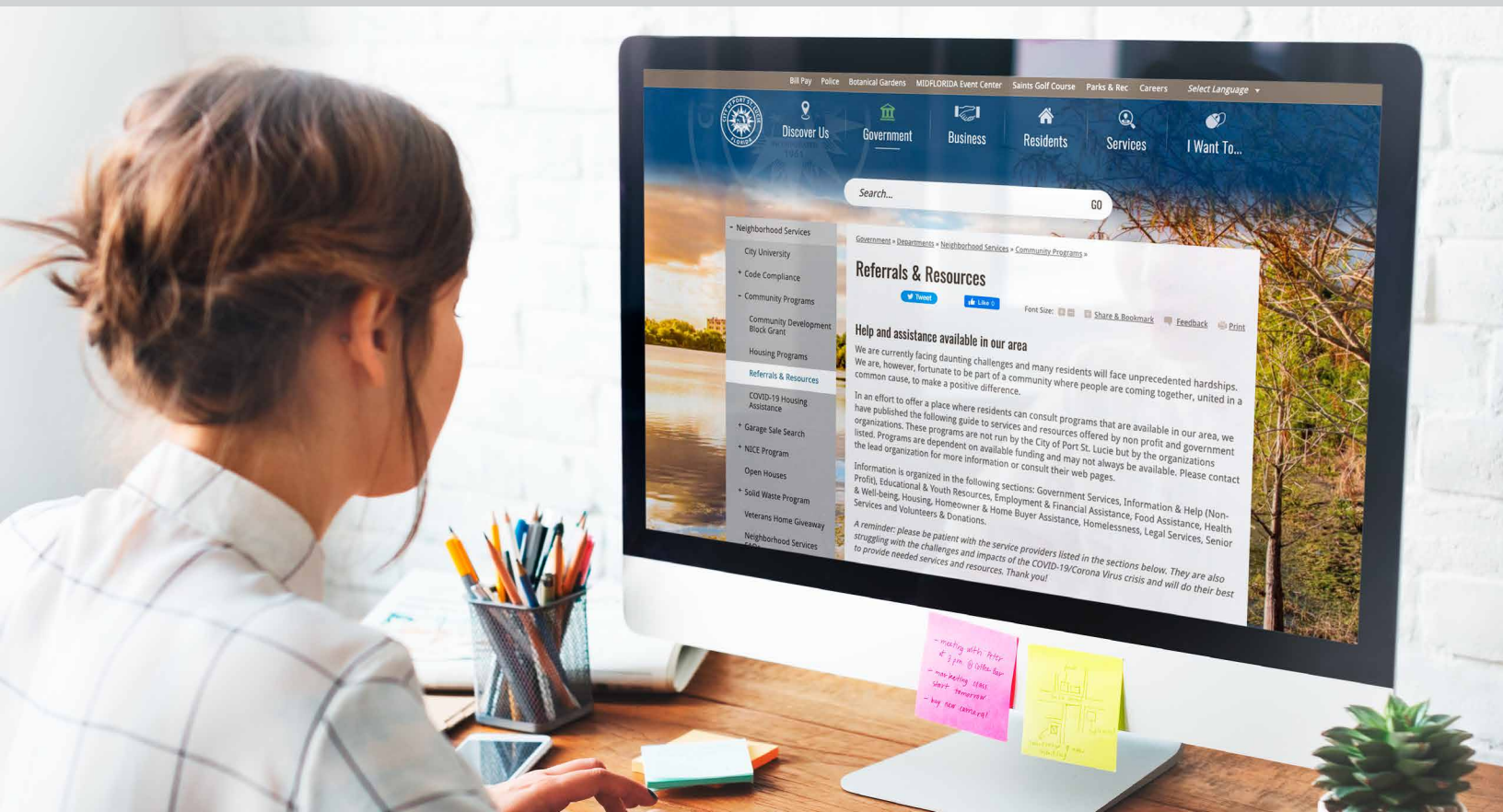
11350 SW Village Parkway
Port St. Lucie, FL 34987
772-345-4800

District Accolades

- Ranked first in state for academic growth.
- 95% graduation rate, ranked 10th in the state.
- 99% graduation rate for traditional high schools.
- One of the top producers of industry certifications state-wide.
- Recognized as a Cambridge District of the Year.
- Recognized as a Best Places to Work since 2017

Career & Technical Education: 34 academics and 56 programs such as:

- Aerospace Technologies
- Allied Health Assisting
- Applied Cybersecurity
- Industrial Biotechnology
- Marine Oceanographic Studies
- Manufacturing Technologies
- Veterinary Technology
- Emerging Technology in Business
- Game Simulation/Animation
- Pharmacy Technician
- Biomedical Science
- Robotics



Referrals & Resources

To enhance the educational and personal achievements of Port St. Lucie residents, the Neighborhood Service Department has developed a referrals and recourses online tool kit at CityofPSL.com/CommunityPrograms

Information is organized in the following sections:

- Government Services
- Information & Help (Non-Profit)
- Educational & Youth Resource
- Employment & Financial Assistance
- Food Assistance
- Health & Well-Being
- Housing, Homeowner & Home Buyer Assistance
- Homelessness
- Legal Services
- Senior Services
- Volunteers & Donations

Help and assistance is available in our area.

Example of Educational & Youth Resources:

Early Learning Coalition

Website: elcslc.org

Phone: 772-595-6424

Address: 5000 Dunn Road
Third Floor,
Fort Pierce, FL 34981

Hours: Monday to Friday,
8 a.m. to 5 p.m.

Services Description:

They are committed to providing a collaborative delivery system of quality child development programs and services to ensure our children become competent and productive individuals.

St. Lucie County Children's Service Council

Website: cscslc.org

Phone: 772-408-1100

Address: 546 NW University Blvd.
Suite 201,
Port St. Lucie, FL 34986

Services Description:

The Council funds 43 programs in our County dealing with: child abuse prevention, drug & alcohol abuse prevention, education retention, healthy baby and youth crime prevention.

Community Redevelopment Agency

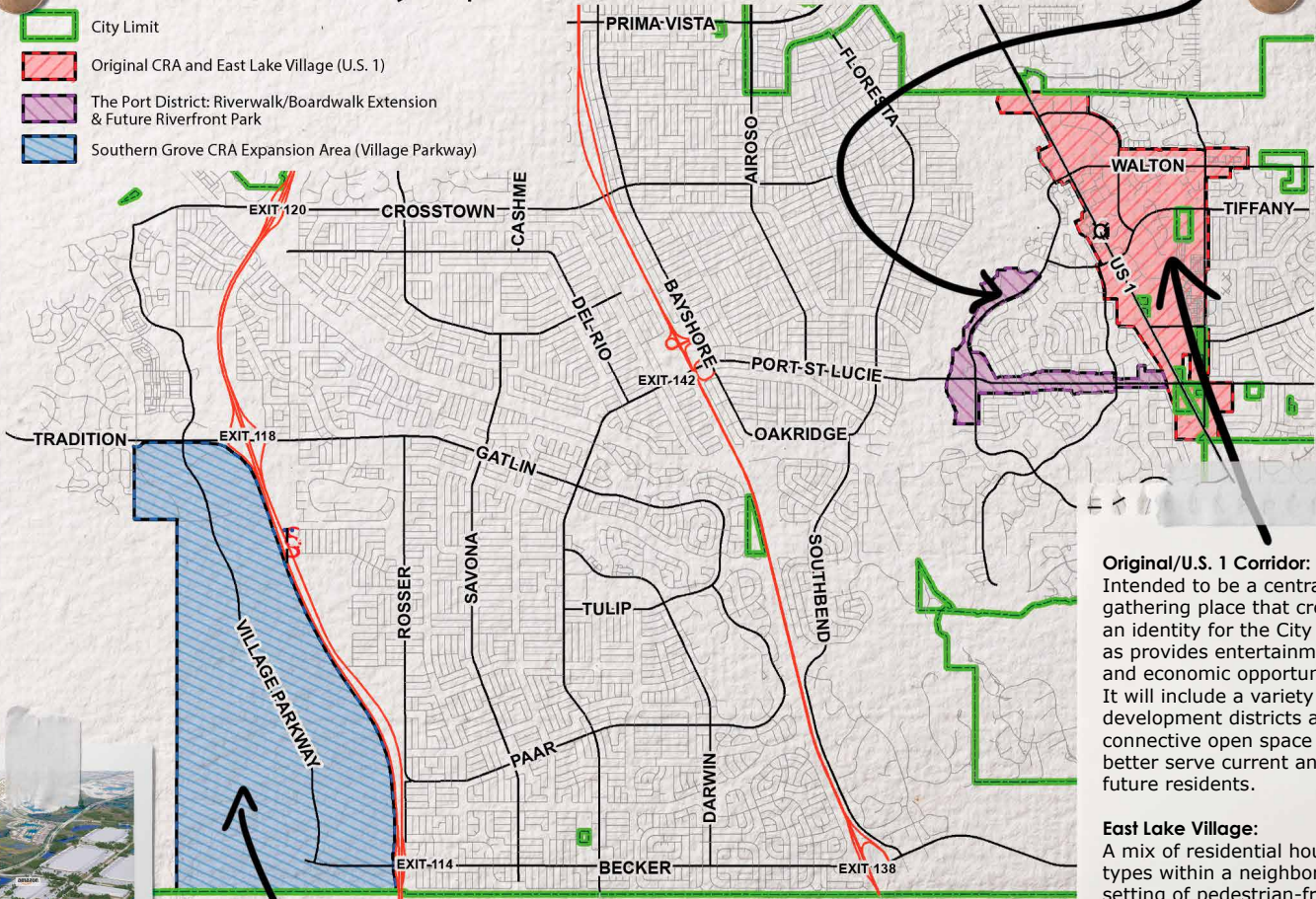
The City of Port St. Lucie is only 63 years young so one could wonder how any redevelopment is necessary. The City's development strategy in 1961 is the foundation for the need for varying levels of redevelopment. You can find out more information about the City's Community Redevelopment Areas (CRAs) and the progress in each of these areas by visiting CityofPSL.com/CRA.

The future of Port St. Lucie's riverfront – The Port District featuring:

- Expanded Riverwalk Boardwalk
- Pioneer Park, a one-of-a-kind playground experience for our youth
- Riverfront dining
- Historic Village
- Waterfront Event Lawn
- Botanical Gardens
- Veterans Memorial Park

Learn more: CityofPSL.com/ThePort
The Port will be a vibrant residential, entertainment and recreation area that protects and enhances existing neighborhoods.

CRA Boundary Map - U.S. 1, The Port District, & Southern Grove



Original/U.S. 1 Corridor:

Intended to be a central gathering place that creates an identity for the City as well as provides entertainment and economic opportunities. It will include a variety of development districts and connective open space to better serve current and future residents.

East Lake Village:

A mix of residential housing types within a neighborhood setting of pedestrian-friendly streets, public open spaces, neighborhood squares and a greenway trail system linking its residents to the rest of the CRA.

About: Southern Grove is also known as Port St. Lucie's "jobs corridor" and is home to Cleveland Clinic Tradition Hospital and the new Cleveland Clinic Florida Innovation and Research Center, Florida International University/Center for Translational Science, Oculus Surgical, Accel, Tamco, FedEx, Cheney Brothers, Amazon and more.

Southern Grove is a regional employment center and retail destination with a diverse economic base formed of innovation.

CityofPSL.com/SouthernGrove



Legacy Park
AT TRADITION

A to Z Listing for Services

A

B

C

1PSL App

772-871-1775 (1PSL)

1PSL, your 24/7 City Hall, navigates you to a wide variety of non-emergency City services and general City information. City services can be requested by phone, web portal, or the 1PSL mobile app. CityofPSL.com/1PSL

D

E

F

Alarms

855-787-2699

Alarm systems throughout St. Lucie County are required to be registered. You can apply online to Public Safety Corporation, also known as CryWolf Services. Registration is free.

G

H

Alert St. Lucie

772-462-8100

Receive alerts about emergencies and important community news by signing up for the emergency alert program. Sign up at stlucieco.gov/alert.

I

J

K

Animals

772-871-5042

Dogs and cats over the age of six months must be licensed within 30 days of acquiring the pet, or when establishing residency within the City. A County license is not required. CityofPSL.com/AnimalControl

L

M

Aquatics

772-871-2183

Ravenswood Pool is in Port St. Lucie and is operated by St. Lucie County. Swim lessons provided by the American Red Cross are available at this facility.

N

O

P

Arts

772-871-5213

Art is an integral part of the City. The City Council established the Public Art Advisory Board which presents a Public Art Master Plan for review and approval by City Council and recommends specific public art projects. The Board is comprised of seven members who serve on a voluntary basis. CityofPSL.com/PublicArt

Q

R

S

Athletics

772-878-2277

The City's expansive sports league program for kids and adults includes baseball, football, cheerleading, basketball, volleyball, tennis, T-ball, soccer and softball. Call for league sign-ups.

T

U

Baby Safe Sleep Program

772-462-3800

See St. Lucie County Health Department.

V

W

Bicycles

772-871-5000

You can register your bicycle with the Police Department online. The form is available on the City's website, CityofPSL.com/Police.

X

Y

Z

Bike Lanes & Paths**772-871-5100**

Bike lanes and paths are available on certain roadways and should be used where provided. For use after dark, bicycles must have a white headlight and a red rear reflector. For bike lane path maintenance concerns, contact the Public Works Streets Division.

Block Parties**772-871-5010**

All events held outside must apply for a special event permit. The permit is valid for two weeks and may be obtained two times per year.

Boat Registration**772-462-1650**

All motorized vessels operating on Florida's public waterways must be titled and registered. Contact the St. Lucie County Tax Collector to register.

Boards & Committees**772-871-5223**

Port St. Lucie is involved with and appoints several boards and committees. Some of these boards are a great way to get involved with your community. Citizens serve on many of these boards and offer their expertise and input about larger programs. They even make recommendations to the City Commission. To find out more call the Office of Management and Budget.

Building Permits and Requirements**772-871-5132**

A City-issued building permit is required for most general maintenance and repairs for any changes that deviate from original building plans. Permit types include security systems, garage alterations, replacement of air conditioning units, new pools or pool heaters, porches or decks, driveways and structural changes or modifications to electrical systems. The Building Department has a drive-thru window to pick up permits, drop off inspections, plan reviews and various paperwork.

Bulk Waste**772-871-1775 press #5**

Bulk items/appliances are picked up monthly. See page 25 or visit CityofPSL.com/SolidWaste.

Bus Transportation**772-464-7433**

St. Lucie County coordinates free transportation with ART Connector. Contact the county for information, including routes and bus times. Visit SLCRide.org.

Business

Are you interested in starting a business in Port St. Lucie? The City has a team of specialists available to answer your questions and send you in the right direction. We can help you avoid costly mistakes relating to permitting, zoning and other issues. CityofPSL.com/Business.

Business Tax**772-344-4356**

The business tax is levied on all businesses in the City of Port St. Lucie. Business training workshops are offered as a convenient way for companies and entrepreneurs to ask questions about common issues.

A
B
C
D
E
F
G
H
I
J
K
L
M
N
O
P
Q
R
S
T
U
V
W
X
Y
Z

A	Calendar of Events	772-871-5225
B	Please call or visit CityofPSL.com/Events to view all City-sponsored special events.	
C	Camps	772-878-2277
D	Day camp is available during summer and when school is out during the school year. Children are supervised in a safe and secure environment. In addition, children will be engaged daily in educational activities, recreation games and crafts that are often themed to the season. Visit PSLParks.com/Camps .	
E	Canal Maintenance	772-871-5100
F	Maintenance for the City-owned canals is managed by the Public Works Department.	
G	Car Seats	772-462-3501
H	The St. Lucie County Fire District provides free child safety seat checks. Appointments are needed. There are a limited number of car seats available for a donation.	
I	CareerSource Research Coast	772-335-3030
J	Located at 584 NW University Blvd., Suite 300, Port St. Lucie, FL 34986, the Career Center can work with you to search for jobs and provide education and training programs. careersourcerc.com	
K	Cars, Abandoned	772-871-5010
L	For abandoned vehicles on the roadway, call the Police Department's non-emergency line at 772-871-5000; for abandoned cars on private property, call Code Compliance at 772-871-5010.	
M	Chamber of Commerce	772-595-9999
N	The Chamber of Commerce unites businesses and professional people in our community. The mission is to help businesses prosper through advocacy, education and exposure.	
O	Charter School	772-429-3600
P	There are several Charter Schools in St. Lucie County. Please go online for information about schools.	
Q	Citizen Services	772-871-5010
R	See Neighborhood Services or visit CityofPSL.com/NSD	
S	Citizen Summit	772-871-5219
T	The Citizen Summit is held each year to hear residents' feedback about our City. The data and information collected is used to help the City Council update its Strategic Plan. To learn more visit, CityofPSL.com/CitizenSummit .	
U	Citizens Police Academy	772-344-4052
V	The Citizens Police Academy is held each year in January and lasts eight weeks. The program offers City residents a view into the Police Department through demonstrations, lectures and discussions.	
W		
X		
Y		
Z		

City Council**772-871-5159**

The City is led by a five-member elected Council, including the Mayor, and sets policy and determines the long-term vision for the City. To learn which Council district you live in, visit CityofPSL.com/Districts.

City Hall**772-871-1775(1PSL)**

City Hall is located at 121 SW Port St. Lucie Blvd. Open Monday through Friday from 8 a.m. to 5 p.m.

City Manager**772-871-5163**

The City Manager handles the business affairs of the City and is appointed by the Mayor and City Council.

City TV, PSL-TV**772-871-5219**

PSL-TV is available on channel 20 on Xfinity and Blue Stream Fiber and features City news, live coverage and rebroadcasts of public meetings events, and more.

City University**772-871-7395**

City University is a free nine-week program designed to help residents learn about their City government. Participants will learn about City departments and how decisions are made.

Code Compliance**772-871-5010**

Through education and enforcement, Code Compliance Specialists facilitate voluntary compliance with City laws and code, empower community self-help and develop public outreach programs. See page 20 for more information.

Colleges

See Schools on page 38.

Commercial Vehicle Info**772-871-5010**

Commercial vehicles are prohibited from being parked or stored in residential areas except while working at a job site. Examples of commercial vehicles: dump trucks, tow trucks or trucks with six wheels, step vans, chemical tank trucks and any pickup or van openly storing equipment, materials or supplies.

Commissioners, St. Lucie County**772-462-1100**

The St. Lucie Board of County Commissioners (BOCC) includes five Commissioners in St. Lucie County.

Communications**772-871-5219**

Communications is highly involved with the promotion of City news and informing the public of news from and around the City. The City website, along with social media, is a large part of the communication. Sign up for free phone, text and email notifications about city-related issues at CityofSPL.com/StayInformed.

A
B
C
D
E
F
G
H
I
J
K
L
M
N
O
P
Q
R
S
T
U
V
W
X
Y
Z

A	Community Cat Program	772-293-4621
B	Free-roaming cat populations, sometimes referred to as “community cats,” generally consist of a mixture of truly feral cats, semi-socialized cats and lost and abandoned pets. Call or email info@operationcatsnptc.com or visit CityofPSL.com/Cats .	
C		
D	Community Helpline	211
E	A community helpline and crisis hotline that provides suicide prevention, crisis intervention, information, assessment and referral to community services for people of all ages.	
F		
G	Community Transit Bus Service	772-879-1287
H	There are several fixed routes for public bus services throughout St. Lucie County and surrounding counties. In addition, there is an on-demand service for eligible disadvantaged individuals and seniors.	
I	Community Development	772-871-5010
J	See Neighborhood Services for Neighborhood Improvement & Community Engagement (NICE).	
K	Community Emergency Response Team (CERT)	772-871-7340
L	The Community Emergency Response Team conducts readiness exercises several times a year to practice and retain citizen emergency response capabilities. You can find out ways to volunteer by contacting them.	
M		
N	Community Redevelopment Agency (CRA)	772-344-4342
O	The Community Redevelopment Agency was created in 2001. There are four CRA areas in the City. The strategy is to create a central business district and a series of mixed-use districts.	
P	Congressional Delegation	
Q	Florida’s Congressional Delegation includes two state senators and four local congressmen. Also see Legislative Delegation.	
R		
S	CPR/First Aid Training	772-672-8800
T	Contact the local chapter of the American Red Cross for CPR, first aid training and other classes in Port St. Lucie.	
U	Crime Prevention	772-871-5027
V	There is a variety of information available on ways to prevent crime from the Port St. Lucie Police Department Crime Prevention Unit. The Police Department will check your home with a free security check by a trained crime prevention specialist.	
W		
X	Digging – Call Before You Dig	811
Y	Get underground utility lines marked for free before you dig on your property by calling 811. Call at least two days before you dig to get the process started and save you and your neighbors from a possible utility outage.	
Z		

Disc Golf**772-878-2277**

There is an 18-hole disc golf course at McCarty Ranch Preserve and a nine-hole disc golf course at Rotary Park. Both are open to the public on a first-come, first-served basis. You must provide your own discs.

Dog-Friendly Beach**772-462-1522**

The closest dog-friendly beach is the Walton Rocks Beach at 6700 S Ocean Drive, Jensen Beach, FL 34957.

Dog Parks**772-878-2277**

There are four dog parks, including Lyngate, McChesney, Woodland Trails and Winterlakes parks. There are several more parks in the City that are on-leash dog friendly. Contact Parks and Recreation for additional information.

Drains, Stormwater**772-871-5100**

For problems or assistance with storm drains, contact the Public Works Department.

Dumping**772-871-5010**

Dumping of trash, debris, construction materials, grass or tree clippings or other items anywhere within the City is strictly prohibited. City Drop-off Site

Residents can drop off yard and bulk waste seven days a week, from 7:30 a.m. to 6:00 p.m. (or dusk), at the Public Works Complex on the corner of Cameo Boulevard and Crosstown Parkway, behind the green, fenced-in area, just west of Florida's Turnpike overpass.

The voluntary drop-off site is closed on all City observed holidays.

E-Newsletters**772-871-5219**

You can sign up for electronic newsletters (e-newsletters) on the City's website: CityofPSL.com/StayInformed

- Building Buzz
- Business Beat
- Chief's Corner PSL Police Department
- District 3 Newsletter by Councilman Bonna
- Keep PSL Beautiful (Litter Prevention, Improving Recycling & Beautification)
- Moment with the Mayor
- MIDFLORIDA Event Center Updates
- Parks & Recreation (Events, Classes, Programs)
- Pointers from the Pipeline
- Press Play
- PSL Mail (City News & Events)
- Swale List
- The Port District
- The Saints Golf Course (Special Offers & Events)
- Veterans' View by Councilman Pickett (District 2)

Economic Development - City of Port St. Lucie**772-873-6374**

The Economic Development Administrator helps guide you through the process of securing your development project approvals.

A
B
C
D
E
F
G
H
I
J
K
L
M
N
O
P
Q
R
S
T
U
V
W
X
Y
Z

A	Economic Development Office (EDC)	772-336-6250
B	The EDC works to promote the retention and expansion of existing businesses, as well as attracting new ones to St. Lucie County.	
C	Education	772-429-3600
D	See Schools and Charter Schools on page 39.	
E	Elderly Program	772-336-8608
F	The Council on Aging of St. Lucie is a nonprofit organization providing services to seniors and assistance to improve their way of life. There are a variety of programs and activities.	
G	Elections, Municipal	772-871-5159
H	The Mayor and City Council members serve four-year staggered terms. Council members must live in the district they represent, however, residents throughout the City vote for every City Council seat. The Mayor is elected at-large in a citywide election and can live anywhere in the City. All voters can vote in the mayoral election.	
I	Emergency Management	772-871-7340
J	Emergency Management coordinates the City's mitigation, preparedness, response and recovery efforts along with maintaining the City's Emergency Operations Center. See Emergency Management Preparedness on page 16.	
K	Emergency Phone Numbers (Police, Fire, EMS Dispatch)	911
L	Call 911 for emergency services.	
M	Employment	772-871-5225
N	A current list of job openings within the City of Port St. Lucie is available online at CityofPSL.com/Careers and at City Hall.	
O	Fences	772-871-5010
P	Fences shall be maintained structurally sound and in good repair per Code Compliance. Permits for fences can be obtained through the Building Department.	
Q	Fingerprinting	772-871-5000
R	Fingerprinting is available at the City Police Department for a small fee. Call or go online for hours available.	
S	Fire Department	772-621-3400
T	The St. Lucie County Fire District has 17 fire stations throughout St. Lucie County, many of which are in Port St. Lucie.	
U	Fire Explorers	772-216-8165
V	The Fire Explorers allows youths to gain insight into a variety of programs that offer hands-on career activities. Explorers learn first-hand by working side-by-side with firefighters.	
W		
X		
Y		
Z		

Fire Extinguisher Disposal

772-462-1768

Fire extinguishers are hazardous waste. Do not dispose with regular trash. Fire extinguishers can be taken to the St. Lucie County Waste Baling and Recycling Facility at 6120 Glades Cut Off Road, Fort Pierce.

First Call for Help

See Community Helpline in the A to Z listings for services.

Fitness Center

772-878-2277

There are two City facilities with a fitness center for use with a membership: the Community Fitness & Wellness Center at 2195 SE Airoso Blvd., and the MIDFLORIDA Event Center, Humana Fitness & Wellness Center at 9221 SE Event Center Place. There are also free outdoor fitness stations along Crosstown Parkway, Floresta Drive, Jessica Clinton Park, Woodland Trails Park, Midport Lake, Woodstork, Sportsman's Park and Winterlakes Park.

Flood Zones

772-871-5177

To check your flood zone or for any questions about your flood zone, visit CityofPSL.com/FloodZone.

Found Property

772-871-5000

If the value of found property is \$100 or less, notice shall be given by posting a description of the property at the law enforcement agency where the property was turned in. The notice must be posted for no less than two consecutive weeks in a designated public place.

Forum on Race Relations and Inclusion (FRRRI)

772-871-5219

The Forum's mission is to bring together the people of Port St. Lucie to listen, share concerns, learn, plan, act and report on progress in maintaining and enhancing our promise of being a City for All People.

Gang Prevention

772-871-5000

It is the policy of the Port St. Lucie Police Department to reduce gang activity by proactive enforcement and intervention by the members of the department.

Garage Sales

772-871-5010

Residents can submit a garage sale form to advertise on the City website free of charge. For proper placement of garage sale signs, please visit the City website. The City will remove signs that are improperly placed.

Garbage and Recycling

772-871-1775 press #5

See page 25.

Golf - The Saints Golf Course

772-398-2901

See page 29.

Go-Peds

See Motor scooter in the A to Z listings for services.

A
B
C
D
E
F
G
H
I
J
K
L
M
N
O
P
Q
R
S
T
U
V
W
X
Y
Z

A	Graffiti	911
B	Contact the Police Department to report graffiti. The Police Department will investigate graffiti and attempt to locate the person responsible.	
C	Gymnasium	772-878-2277
D	There are several facilities in the City with gyms and exercise equipment, including Minsky Gym, the Community Center and the MIDFLORIDA Event Center. Contact Parks & Recreation for additional information.	
E		
F	Handicapped Parking	772-871-5000
G	It is unlawful to park a vehicle within any parking space designated for handicapped persons.	
H	Hazardous Waste Disposal	772-871-7000
I	Household hazardous waste includes pesticides, insecticides, chemicals, gasoline, paint, lead, acid batteries, motor oil and electronics. The City has a drop-off event biannually at the Public Works Facility. You may also take these items to the Solid Waste Baling and Recycling Facility. See Garbage and Waste on page 25.	
J	Historical Society, Port St. Lucie	772-462-1795
K	The Historical Society works to preserve the history of Port St. Lucie. Visit pslhistory.org .	
L	Home Security Check	772-871-5027
M	The Police Department will provide a free security check of your home upon request. The security survey will be done by a trained crime prevention specialist and will include information on how best to keep your home safe.	
N		
O	Hospitals	
P	See Visitor Information for a list of hospitals on page 37.	
Q	House Watch	772-871-5000
R	You can request to include your home on the Close House Watch List. The Police Department will make periodic checks of your property.	
S		
T	Housing Programs	772-871-7395
U	The City works year-round to leverage funding for City projects and neighborhood programs through grants. The City receives federal and state grant funds to address housing and community development projects.	
V	Hurricane Disasters and Preparedness	772-871-7340
W	See Emergency Preparedness page 16.	
X	Immunizations	772-462-3800
Y	Florida schools require children to have certain immunizations. Contact the Florida Department of Health for additional information.	
Z		

Indian River State College (IRSC)**772-462-4772**

This college offers programs leading to various degrees as well as career training programs.

Jobs, City of Port St. Lucie**772-871-5225**

The City of Port St. Lucie has earned the Best Place to Work from the St. Lucie County Human Resource Association for several years for providing a first-class work environment for City employees. CityofPSL.com/Careers.

Juvenile Offender Programs**772-871-5000**

The Police Department's Juvenile Restorative Justice Initiative is a pre-arrest diversion program which allows law enforcement to hold juvenile misdemeanors accountable for their crimes without involving the State Attorney's Office or Circuit Court.

Keep Port St. Lucie Beautiful**772-871-7000**

KPSLB is a program housed within the Public Works Department. KPSLB's mission of "engaging individuals to take greater responsibility for improving their community environments" pertains specifically to litter prevention, improving recycling and beautification. Help keep the City clean by volunteering in the Adopt-a-Street Program and conduct cleanups.

Lawn Care**772-871-5010**

The Code of Ordinances states that grass cannot exceed 12 inches in height on all improved property. See page 22.

Legislative Affairs, St. Lucie County**772-462-6426**

Legislative Affairs provides coordination to ensure that St. Lucie County receives resources and support to best serve its citizens.

Library**772-337-5669**

See list of Libraries on page 38.

Lifeguard Training**772-871-2183**

Water Safety Instructor Classes and American Red Cross classes are offered periodically. Call for additional information.

Litter Hotline**772-871-7000**

The City's litter hotline allows citizens to report conditions such as commercial or residential litter, illegal dumping, debris in a canal and general litter in Port St. Lucie.

Medians**772-871-5100**

The Public Works Department maintains and mows the road right-of-way canals, medians and drainage right-of-way areas in the City.

A
B
C
D
E
F
G
H
I
J
K
L
M
N
O
P
Q
R
S
T
U
V
W
X
Y
Z

A	Meeting Rooms	772-878-2277
B	There are a variety of meeting rooms available at the City Community Center and the MIDFLORIDA Event Center for a fee.	
C	Memorial Tree Remembrance	772-337-1959
D	The Port St. Lucie Botanical Gardens has a special way to create a remembrance in honor of a loved one by planting a tree for Arbor Day. The tree will be planted at the Botanical Gardens.	
E		
F	Motor Scooter, Go-Peds	772-871-5000
G	It is unlawful to operate a motor scooter on any roadway in Florida, unless the operator has a valid driver's license.	
H	Mosquito Control	772-462-1692
I	The mission of the Mosquito Control District is to control mosquitoes and other insects using a combination of management approaches.	
J		
K	Mowing & Landscape Maintenance	772-871-5100
L	Mowing and maintaining all road right-of-way canals and drainage right-of-way within the City is maintained by the Public Works Environmental Services Division.	
M	Nature Center St. Lucie County	772-785-5833
N	The Oxbow Eco-Center is a preserve on the North Fork of the St. Lucie River. There are boardwalks, pedestrian trails and observation towers, allowing visitors to fully experience nature without disturbing it. Trails are open from sunrise to sunset.	
O		
P	Nature Programs	772-462-2536
Q	St. Lucie County Environmental Resources Department offers hikes and other nature programs.	
R	Neighborhood Improvement & Community Engagement (NICE)	772-871-5010
S	The NICE program is administered by the Neighborhood Services Department. NICE focuses on improving the community, neighborhood by neighborhood. Citizens envision, plan and help create a master plan by defining the boundaries and identifying future improvements. Find out which neighborhood you live in on page 18.	
T	Neighborhood Services	772-871-5010
U	The Department focuses on helping residents maintain a high quality of life in the City's neighborhoods.	
V		
W	Neighborhood Watch	772-871-5000
X	Contact the Police Crime Prevention Unit to start or join a Neighborhood Watch group in your area.	
Y	Noise Permits	772-871-5000
Z	A noise permit is required if you are having a gathering or some outside activity in which noise will be a factor, including a band, DJ, etc. Contact the Police Department's non-emergency line for more information.	

Notary Service**772-871-5000**

Notary service is available at the Police Department for a charge of \$10.

Open Houses**772-871-5010**

The City website has a place to promote your open house. The map webpage is provided with a list of upcoming open houses. Visit CityofPSL.com/OpenHouse

Parking Tickets**772-871-5000**

The Police Department only accepts cash or money orders. Code Compliance accepts payments in the form of cash, check, money order or debit/credit.

Parking Restrictions**772-871-5010**

The most common parking violations include: front yard parking, parking on the road and/or parking too close to the roadway, parking against the flow of traffic, vertically parking in the swale and parking on the swale without owner's consent.

Parks and Recreation**772-878-2277**

The City has over 48 parks and recreation facilities that offer a wide variety of leisure activities for residents and visitors of all ages.

Partners Against Crime**772-871-5100**

Partners Against Crime is a program offered by the Port St. Lucie Police Department that focuses on strengthening partnerships between the community and police department through increased communication and interactions with local businesses.

Passports**772-462-3207**

You may apply for a passport at the St. Lucie County Clerk's Office in Port St. Lucie at 250 NW Country Club Drive, and the U.S. Post Office, 5000 W. Midway Road, Fort Pierce.

Permits**772-871-5132**

Permits for building additions and home improvements can be obtained from the Building Department. Permits for driveways are obtained in the Public Works Department.

Pets

See animals in the A to Z Listings for Services.

Pickleball**772-878-2277**

Whispering Pines Park offers eight lighted outdoor pickleball courts that can be used during the day or nighttime, at no cost. The lighted courts are located at the Tennis Center. Winterlakes Park offers four outdoor pickleball courts. Indoor pickleball courts are available inside the MIDFLORIDA Event Center gymnasium during scheduled hours and for a fee.

A
B
C
D
E
F
G
H
I
J
K
L
M
N
O
P
Q
R
S
T
U
V
W
X
Y
Z

A	Picnic and Pavilion Rentals	772-878-2277
B	Contact Parks and Recreation for a list of available pavilions.	
C	Planning	
D	See Zoning in the A to Z Listings for services.	
E	Poison Control	911 or 800-222-1222
F	If you suspect someone may have ingested poison, call 911. The number for the Poison Control Center is 800-222-1222.	
G	Police Athletic League	772-398-9436
H	Working with the Police Department, the Police Athletic League (PAL) with the motto, "Filling Parks, Not Prisons," has a variety of activities for youths ages 8 to 18.	
I		
J	Police Department	911 or 772-871-5000
K	Treasure Coast Crime Stoppers 800-273-8477, Professional Standards Division 772-871-5106, Crime Prevention 772-871-5027, Traffic Accident Reports 772-871-5047, Police Athletic League 772-398-9436, Victim Assistance 772-344-4331, Volunteering 772-344-4052.	
L		
M	Police Explorers	772-871-5000
N	The Port St. Lucie Police Explorers gives young adults a close look at the criminal justice field. The program provides an opportunity for them to experience how a department functions and what it takes for a career in law enforcement.	
O		
P	Police Report Pick Up	772-871-5047
	Traffic accident reports can be obtained by calling or submitting a public-records request online.	
Q		
R	Police, Off Duty Service	772-871-5000
S	Residents can hire police officers for off-shift security or traffic details. Call the Special Detail Office for a permit and the current fees.	
T		
U	Pools, St. Lucie County	772-871-2183
V	Ravenswood Pool is at 400 SW Ravenswood Lane in Port St. Lucie.	
W	Post Office	800-275-8777
X	There are two Post Office locations in Port St. Lucie: 2255 SE Veterans Memorial Parkway, and 290 NW Peacock Road.	
Y	Property Appraiser	772-462-1000
Z	The St. Lucie County Property Appraiser is responsible for placing a fair, equitable and just value on all real and tangible personal property in St. Lucie County.	

Public Art

The Art in Public Places Master Plan seeks to build upon the great work that has already been done to create a strong foundation for public art in Port St. Lucie. With a strong ordinance and consistent funding, the Art in Public Places program is on the brink of making major impacts in the City. Visit CityofPSL.com/Art or page 26.

Public Works

772-871-5100

The Public Works Department oversees City resources that manage the planning, design, construction and maintenance of City infrastructure and various facilities. This includes roads and bridges, water quality and drainage, traffic operations and landscaping.

Racquetball

772-878-2277

There are four indoor racquetball courts at the MIDFLORIDA Event Center. Outdoor racquetball courts are available at Sandhill Crane Park, Lyngate Park and Ravenswood. Racquets and racquetball are available for rent. Prices vary.

Recycling Collection

772-871-1775 press #5

See Garbage and Waste on pages 25.

Rentals

772-878-2277

Parks or picnic and pavilion rentals are available to rent throughout various locations in the City. The area is a vibrant residential, entertainment and recreation area that protects and enhances existing neighborhoods. For Meeting Rooms, see Meeting Rooms.

Safe Place

772-462-3800

Project Safe Place is a place where a young person can go to request assistance. The yellow and black signs displayed indicate the business part of the network of safe places. The individual will then be taken to a shelter for counseling.

Safety House

772-621-3400

The Safety House is a mobile classroom setting designed to demonstrate how to safely escape, how to properly maintain smoke alarms and the importance of making a fire escape plan. The St. Lucie County Fire District's Safety House is available to visit schools throughout St. Lucie County.

Schools

772-429-3600

St. Lucie County School's mission is to ensure all students graduate from safe and caring schools, equipped with the knowledge, skills and a desire to succeed. For a list of schools, visit stlucie.k12.fl.us.

Senior Center and Programs

772-336-8608

The Council on Aging is a place to meet and learn, get help and support and have fun! It provides needed services and helps coordinate these services with appropriated community support agencies. State case managers provide ongoing guidance to seniors in need. Services include home services, nutrition, adult day care, personal care, respite care, recreation, social activities and transportation.

A
B
C
D
E
F
G
H
I
J
K
L
M
N
O
P
Q
R
S
T
U
V
W
X
Y
Z

A
B
C
D
E
F
G
H
I
J
K
L
M
N
O
P
Q
R
S
T
U
V
W
X
Y
Z

Senior Ride Bus Service

See Bus Transportation in the A to Z Listing for Services.

Seniors, Safeguard

772-871-5303

Participants in the Safeguard Our Seniors program will complete a questionnaire with their information. The information is then kept on file at the 911 center. Upon receipt of the questionnaire, a volunteer will deliver and affix your decal to your front door.

September 11th Memorial

772-807-4488

The City's 9/11 Memorial is located at the MIDFLORIDA Event Center. The memorial features an 11-foot section of metal girder from the fallen World Trade Center and suspended above a fountain.

Septic to Sewer

772-871-5132

See Sewer Expansion Project on page 12.

Signs

772-871-5132

Most signs require a sign permit. The sign permit is issued through the Building Department.

Skate Park

772-462-1523

The 15,000-square-foot concrete facility includes challenging obstacles and a snake run. 2100 Virginia Ave, Fort Pierce, FL 34950.

Social Security Office

800-772-1213

The local office is at 6810 U.S. 1, Port St. Lucie, FL 34952.

Solicitation, Door-to-Door

772-871-5000

Anyone who canvasses, goes door-to-door for sales or operates a mobile food wagon is required to obtain a solicitor permit from the Port St. Lucie Police Department. In some cases, an occupational license may also be required in addition to a solicitor permit.

Special Events

772-878-2277

The City of Port St. Lucie offers a variety of special events throughout the year, including Freedomfest, Fall Fun Fest, Festival of Lights and many others.

Special Needs Shelter

772-462-8100

The St. Lucie County special needs shelter is for individuals who seek shelter from a disaster and need medical assistance. The shelter is at the Havert L. Fenn Center, 2000 Virginia Avenue, Fort Pierce, FL 34982.

Speeding

772-871-2183

See Help Keep Our Roadways Safe and Reporting a Dangerous Driver on page 14.

Sports Leagues

772-344-4142

The Parks & Recreation Department is proud of its commitment to providing many opportunities for participation in sports leagues. The leagues encourage and teach good sportsmanship and enhance the well-being of children and adults, while in a fun and safe environment. [PSLParks.com/Leagues](https://pslparks.com/leagues).

St. Lucie County Board of County Commissioners

772-462-1100

St. Lucie County is comprised of the City of Port St. Lucie, the City of Fort Pierce (county seat) and St. Lucie Village. As of 2018, St. Lucie County has a population of roughly 313,000. St. Lucie County is 572 square miles and has 21 miles of coastline.

St. Lucie County Alerts Notifications

stlucieco.gov/alert

Get alerts for emergencies and other important community news by signing up for the Emergency Alert Program. This system enables us to provide you with critical information quickly in a variety of situations, such as severe weather, unexpected road closures, missing persons and evacuations of buildings or neighborhoods.

St. Lucie Mets

772-871-2132

Clover Park is the spring training home of the New York Mets, summer home of the St. Lucie Mets and the hub for all New York Mets minor league operations.

Street Lights, Florida Power & Light

772-871-5157

Contact FPL to report a street light that is out or malfunctioning. To request the installation of street lights on a public residential street in the City to create a Street Lighting Boundary Area, the owner of a property on the street must submit a request by contacting the Clerk's Office.

Street Repairs

772-871-5100

Roadways are maintained by the Public Works Streets Division. Responsibilities include street paving, pothole repair and street sweeping.

Substance Abuse

772-468-3909

New Horizons offers mental health care for adults and children. There are a variety of programs, counseling and outreach.

Sunshine Kitchen

772-247-2800

The Sunshine Kitchen is a state-of-the-art food incubator where chefs, caterers, food truck operators and others can hone their culinary skills. The facility provides access for people to produce and market food business items.

Swim Lessons

772-871-2183

St. Lucie County and the American Red Cross Learn-To-Swim programs are offered throughout the summer.

A
B
C
D
E
F
G
H
I
J
K
L
M
N
O
P
Q
R
S
T
U
V
W
X
Y
Z

A	Swales	772-871-5100
B	See Swales on page 23.	
C	Taxes	
D	Learn more about your City taxes by visiting CityofPSL.com/Taxes .	
E		
F	Tennis Lessons	772-871-7670
G	Tennis lessons are available at Whispering Pines Park. There are various classes for different levels of experience.	
H	Text Alerts	772-255-3078
I	Sign up to receive text alerts about City related issues at CityofPSL.com/Text or text JOIN to 772-255-3078.	
J	Tourism	800-344-8443
K	The St. Lucie County's Tourism Division is to improve the economy through activities, special events, marketing and expanding tourism as a year-round destination.	
L		
M	Traffic Accident Report	772-871-5047
N	After an accident, you can obtain a report from the Port St. Lucie Police Department.	
O	Transportation	
P	See Bus Transportation in the A to Z Listings for Services.	
Q	Trash Collection	
R	See Trash and Garbage on page 25.	
S	Trees	772-871-5103
T	The City of Port St. Lucie is a Tree City USA for its commitment to maintain trees and in keeping the City green and beautiful. The City Council has challenged residents by asking all citizens to plant a tree.	
U		
V	Unemployment	866-482-4473
W	CareerSource Research Coast provides extensive employment and training programs and services for local job seekers and employers.	
X	Vacant Lots	772-871-5010
Y	The owner of unimproved City property who creates, suffers or permits encroachment upon a developed lot shall be responsible for abating the nuisance.	
Z		

Vacation Watch**772-871-5000**

See House Watch in the A to Z Listings for Services.

Vehicle Information Check

Please go to flhsmv.gov

Vehicle Registration**772-462-1650**

Visit the St. Lucie County Tax Collector's Office to register or renew your driver's license.

Veterans Memorial Park**772-878-2277**

There are memorials to various branches of the military in this park.

Veterans Programs**772-337-5670**

St. Lucie County Veterans Services assists St. Lucie County veterans and their families with various services and information about benefits.

Volunteer Services**772-812-4858**

Join the City's growing ranks of volunteers who are helping to make contributions to our great City every day. There are a wide variety of opportunities. Please find out how you can make a difference.

Voter Registration**772-871-5410**

Contact the St. Lucie County Supervisor of Elections to register and for voting locations. There are three locations in Port St. Lucie to register. Visit slcelections.com.

Waste Landfill**772-462-1768**

Residents of St. Lucie County may bring acceptable household hazardous waste to the Solid Waste Baling & Recycling Facility for proper disposal free of charge. 6120 Glades Cut Off Road, Fort Pierce.

Water Services**772-873-6400**

Contact the City of Port St. Lucie Utility Systems Department for service or for an emergency. For the St. Lucie West Services District, call 772-340-0220.

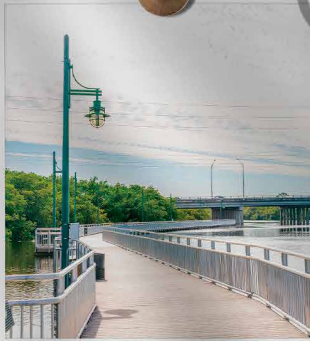
Website Government**772-871-5225**

Visit the City's website at CityofPSL.com to get the most current information about the City. Visitors and residents can submit comments, compliments, complaints and requests to 1PSL.

Zoning**772-871-5212**

For zoning matters, or to find out what is under construction in the City, what type of structure can be built on vacant land or what type of business may be located at a specific address, contact Planning & Zoning.

A
B
C
D
E
F
G
H
I
J
K
L
M
N
O
P
Q
R
S
T
U
V
W
X
Y
Z



The Port District



Crosstown

City Council - 772-871-5159

Mayor Shannon Martin

Councilmember Stephanie Morgan, District 1

Councilmember David Pickett, District 2

Councilmember Anthony Bonna, Sr., District 3

Councilmember Jolien Caraballo, District 4

Jesus Merejo, City Manager, 772-871-5163

David Graham, Assistant City Manager, 772-344-4309

Kristina Ciuperger, Deputy City Manager, 772-871-5207

Teresa Lamar-Sarno, Deputy City Manager, 772-873-6379

Kate Parmelee, Deputy City Manager, 772-871-5163

CityofPSL

@CityPortStLucie

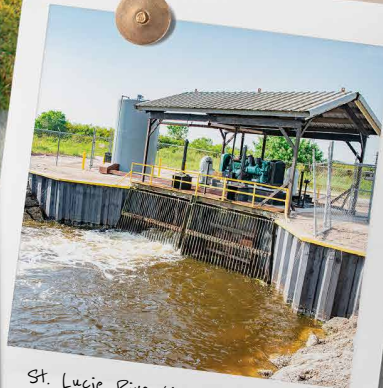
CityPortStLucie

CityofPSL

City of Port St. Lucie

City of Port St. Lucie

CityofPSL.com



St. Lucie River/L2s Water Quality Project at McCarty Ranch



Florida International University

Cleveland Clinic Tradition Hospital at Southern Grove Jobs Corridor