



About Port St. Lucie

- We are located in the heart of Florida's beautiful Treasure Coast. At 120 square miles in St. Lucie County, we're the state's sixth largest city, situated about 50 miles north of West Palm Beach, halfway between Miami and Orlando.
- Convenient access to Florida's Turnpike and Interstate 95.
- International airports are located in Orlando, West Palm Beach and Fort Lauderdale. The Treasure Coast International Airport and Business Park is just north of the City in St. Lucie County.
- For the past several years, Port St. Lucie has topped several Best Places lists in national and international publications. To see them all, visit www.cityofpsl.com/goodnews.
- St. Lucie Public Schools (SLPS) earned a graduation rate of 90.8% in 2022, which exceeds the state average of 87.3%. SLPS is one of only four counties in the state that can boast of six consecutive years exceeding 90%.
- Home to world-class healthcare such as Cleveland Clinic Florida and HCA Healthcare.
- The City is nearly litter-free, according to the Keep America Beautiful Community Appearance Litter Index. This distinction results from continuous hard work by our residents, businesses and visitors.

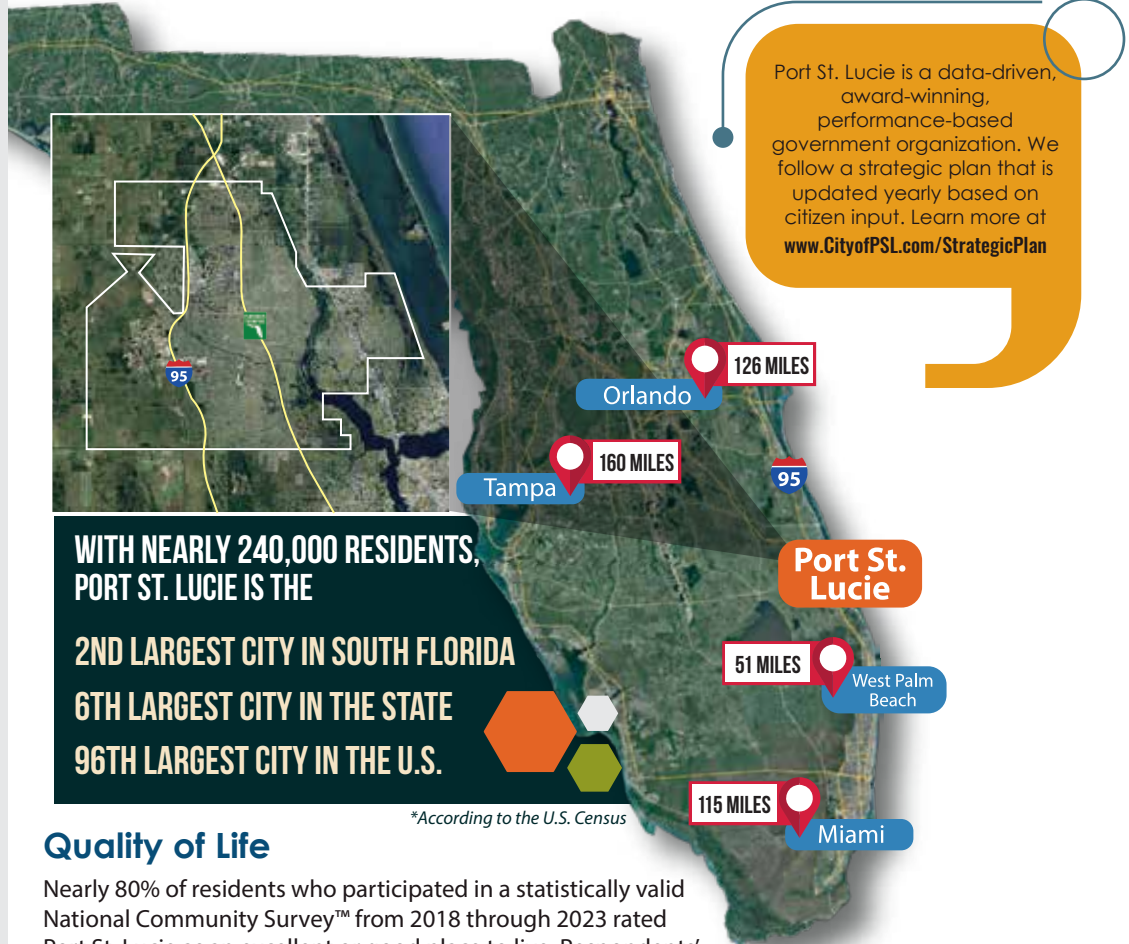


Buzz about PSL



Job Creation

High-quality job creation is a priority for the City. PSL's Southern Grove Jobs Corridor is one of Florida's unique job opportunity areas for large-scale manufacturing, logistics and retail development. It has the largest swath of development-ready vacant land in all of South Florida that fronts over 4 miles of Interstate 95, with interchanges at Tradition Parkway and Becker Road. Learn more at www.cityofpsl.com/southerngrove.



WITH NEARLY 240,000 RESIDENTS, PORT ST. LUCIE IS THE
2ND LARGEST CITY IN SOUTH FLORIDA
6TH LARGEST CITY IN THE STATE
96TH LARGEST CITY IN THE U.S.

**According to the U.S. Census*

Quality of Life

Nearly 80% of residents who participated in a statistically valid National Community Survey™ from 2018 through 2023 rated Port St. Lucie as an excellent or good place to live. Respondents' evaluations for the overall quality of life, neighborhoods, the City as a place to retire, raise children and live — and the overall appearance and image — have each improved considerably since a baseline survey conducted in 2009. In fact, U.S. News & World Report ranked Port St. Lucie as the 10th most desirable in 2023. We're proud to be the spring training home of the New York Mets, as well as the new home of the Florida Sports Hall of Fame.

Safest Large City

For more than a decade, Port St. Lucie has maintained one of the lowest crime rates for a City in Florida with a population of more than 100,000 residents. In 2022 and 2023, U.S. News & World Report named PSL the second safest city in the United States.

Diversity

According to a study by researchers at the University of California, Berkeley, Port St. Lucie is one of only two of 113 of the largest cities in the United States to qualify as integrated. (The other is Colorado Springs, Colo.)

Stewards for the Environment

Our leaders have been fighting for our rivers and natural resources at a local level for the past 20 years through a variety of efforts. These projects include one of the largest septic-to-sewer conversions in the country, building hundreds of acres of stormwater treatment areas, the St. Lucie River/C-23 Water Quality Project at McCarty Ranch and Eastern Watershed Improvement Project. Learn more at www.CityofPSL.com/WaterQuality.

Get a glimpse of life in Port St. Lucie
in our Welcome Guide:
www.cityofpsl.com/welcome

CITY COUNCIL 772-871-5159

Mayor Shannon Martin

Vice Mayor Jolien Caraballo, District 4

Councilwoman Stephanie Morgan, District 1

Councilman David Pickett, District 2

Councilman Anthony Bonna, District 3

OFFICE OF THE CITY MANAGER

Jesus Merejo, City Manager
772-871-5163

David Graham, Assistant City Manager
772-344-4309

Teresa Lamar-Sarno, Assistant City Manager
772-873-6379

Kristina Ciuperger, Deputy City Manager
772-871-5207

Growth Indicators

Permits Issued

2017	32,020
2018	39,899
2019	41,504
2020	52,355
2021	68,261
2022	60,774

Single-Family Permits Issued

2017	1,518
2018	2,200
2019	2,722
2020	3,592
2021	5,335
2022	3,882

Certificates of Occupancies Issued

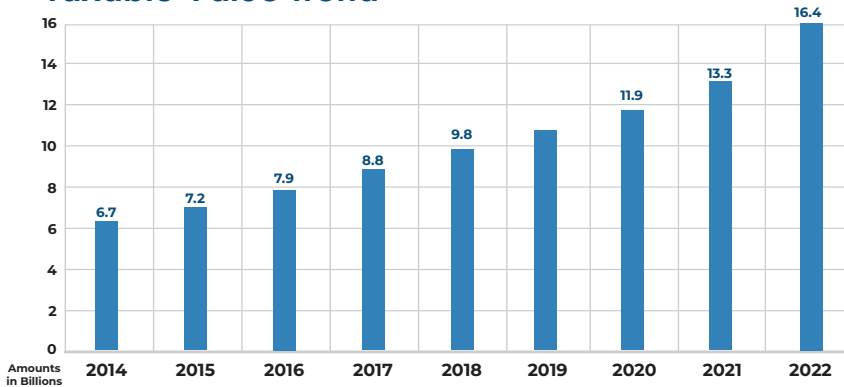
2017	1,382
2018	1,824
2019	2,711
2020	2,893
2021	3,911
2022	4,658

2023 BEST PLACES
& WORLD REPORT
U.S. News
PORT ST. LUCIE

- #2 SAFEST
- #5 FASTEST GROWING
- #10 MOST DESIRABLE
- #18 FOR WEATHER
- #19 FOR SINGLES
- #22 TO RETIRE
- #25 FOR YOUNG PROFESSIONALS
- #63 BEST PLACE TO LIVE

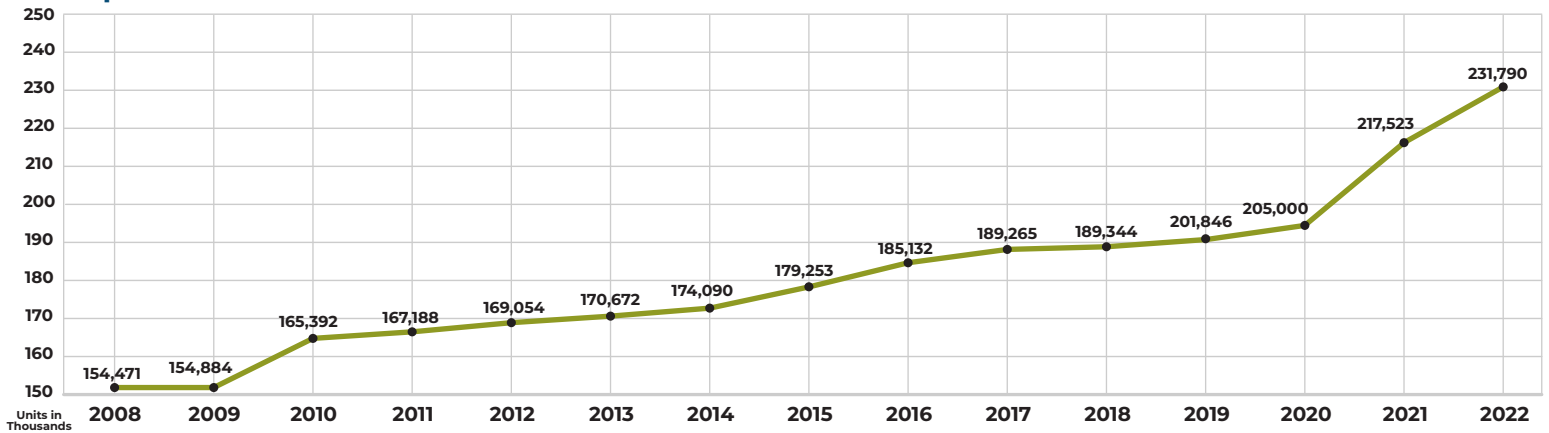
IN THE UNITED STATES

Taxable Value Trend



Population Growth

Data from U.S. Census Bureau



121 SW Port St. Lucie Blvd., Port St. Lucie, FL 34984
www.cityofpsl.com • 772-871-1775 (1PSL)