



crosstown

CROSSTOWN PARKWAY EXTENSION

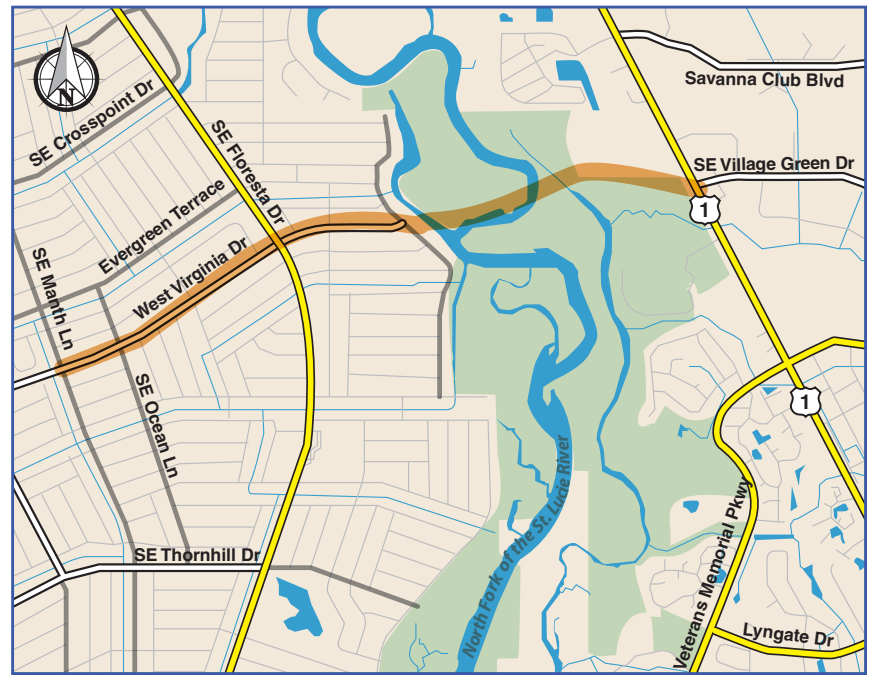
City of Port St. Lucie

CROSSTOWN PARKWAY EXTENSION DESIGN/BUILD PROJECT

from Manth Lane to U.S. Highway 1
City of Port St. Lucie

WELCOME!

The Crosstown Parkway Extension Design/Build Project will provide a new bridge crossing over the North Fork of the St. Lucie River in the City of Port St. Lucie, connecting the existing Crosstown Parkway from Manth Lane to U.S. 1 Highway at Village Green Drive. The project is approximately two miles long with a 4,000 foot bridge. The six-lane divided highway and bridge will serve as a multi-modal transportation alternative to include accommodations for automobile, bicycle, pedestrian and public transit. The project will help alleviate traffic congestion, providing relief to the two existing crossings of the North Fork of the St. Lucie River at Port St. Lucie and Prima Vista Boulevards. The project will improve public safety, emergency response times, help reduce travel times and enhance mobility, also providing a linear park.



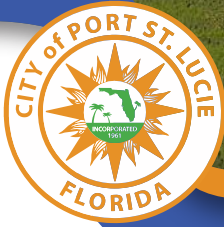
Features of the project include:

- Dedicated Bicycle Lanes in each direction
- Superstreet (stretched out, signalized roundabout) at the Crosstown and Floresta Intersection
- Raised landscaped median
- Green space with a wide pedestrian pathway on both sides, west of Floresta Drive, a linear park
- Aesthetically pleasing bridge overlooks
- Pedestrian and Highway lighting
- Architectural treatments
- Landscaping
- Drainage
- American with Disability (ADA) Compliant Canoe/ Kayak Launch
- Exercise stations

For more information and project updates, please visit the project website at www.crosstownextension.com

Beth Zsoka

Crosstown Parkway Extension
Public Information Officer
1825 SE Tiffany Avenue, Suite 101
Port St. Lucie, FL 34952
Hotline: 772-871-5176



crosstown

CROSSTOWN PARKWAY EXTENSION

City of Port St. Lucie

PROJECT SCHEDULE

Some construction activities for the project started in January 2017 with the issuance of the South Florida Water Management District's (SFWMD) Environmental Resource Permit (ERP). The anticipated completion date is Fall 2019.

MAINTENANCE OF TRAFFIC

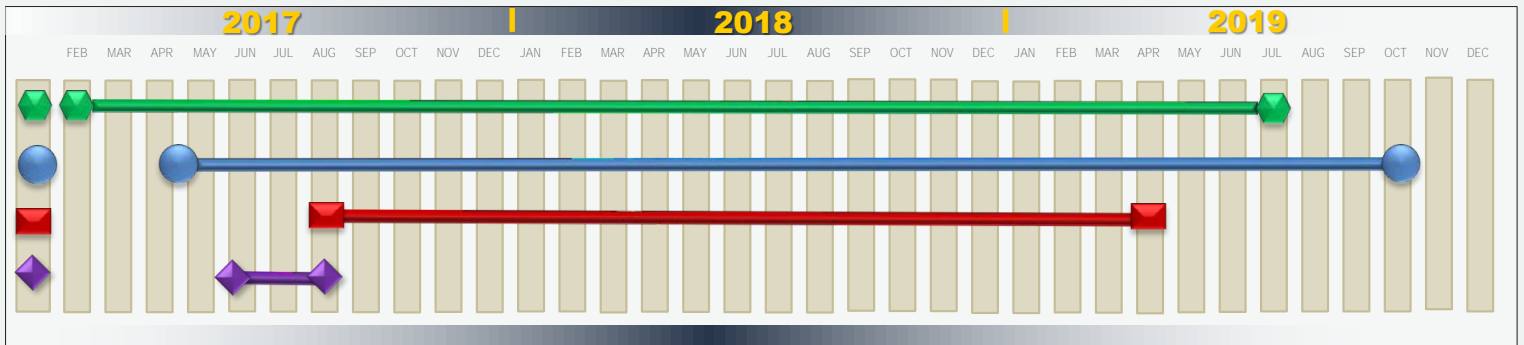
West Virginia Drive is closed from east of Sandia Drive to SE Coral Reef Street. Floresta remains open to traffic however there will be closures at Floresta Drive for approximately three months during the summer of 2017.

Please seek alternate routes to accommodate safety in this area. Alternate routes can include Prima Vista Boulevard, Thornhill Drive, Port St. Lucie Boulevard, Sandia Drive and Airoso Boulevard.



ANTICIPATED PROJECT SCHEDULE

-  Manth Lane to Coral Reef Street **February 2017 to July 2019**
-  Bridge Construction **May 2017 through October 2019**
-  US Highway 1 and Village Green **August 2017 through April 2019**
-  Floresta Intersection **June 2017 through August 2017**



Your attendance at this Construction Open House is appreciated. We value your participation and ask that your written comments be placed in the comment box or mailed to Ms. Beth Zsoka, 1825 SE Tiffany Avenue, Suite 101 Port St. Lucie, Florida 34952, We invite you to visit the project website at www.crosstownextension.com for more information, project updates and to sign up to receive emails regarding the project. Do you have questions about the project or do you want more information about the project? Invite our team to come talk to your homeowner association or civic organization.